



TSX V : SGA

Cautionary Statement

FORWARD LOOKING STATEMENTS

This presentation contains forward-looking statements which can be identified by the use of words “anticipated”, “goal”, and phrases or statements that certain actions, events or results “may”, “would”, or “will” be taken, occur or be achieved.

Forward-looking statements involve known and unknown risks, future events, conditions, uncertainties and other factors which may cause the actual results, performance or achievements to be materially different from any future results, prediction, projection, forecast, performance or achievements expressed or implied by the forward-looking statements. Such factors include, among others, the results of due diligence activities, the interpretation and actual results of current exploration activities; changes in project parameters as plans continue to be refined; future prices of gold; possible variations in grade or recovery rates; failure of equipment or processes to operate as anticipated; labor disputes and other risks of the mining industry; delays in obtaining governmental approvals or financing or in the completion of exploration, as well as those factors disclosed in Samco Gold's Prospectus dated June 27, 2011 filed and publicly available under the Company's profile on the SEDAR website at www.sedar.com. Although Samco Gold has attempted to identify important factors that could cause actual actions, events or results to differ materially from those described in forward-looking statements, there may be other factors that cause actions, events or results not to be as anticipated, estimated or intended. There can be no assurance that forward-looking statements will prove to be accurate, as actual results and future events could differ materially from those anticipated in such statements. Accordingly, readers should not place undue reliance on forward-looking statements. The Company does not intend, and does not assume any obligations, to update forward-looking statements, whether as a result of new information, future events or otherwise, unless otherwise required by applicable securities laws.

This presentation has been approved by Mr David Shatwell who is a Fellow of the Australian Institute of Geoscientists. Mr. Shatwell is a Qualified Person within the meaning of Canadian National Instrument 43-101.

NOT FOR DISTRIBUTION OR DISSEMINATION IN THE UNITED STATES

The securities referred to in this presentation have not been and will not be registered under the United States Securities Act of 1933, as amended (the “U.S. Securities Act”), or any state securities laws and may not be offered or sold within the United States unless registered under the U.S. Securities Act and applicable state securities laws or an exemption from such registration is available. This presentation does not constitute an offer to sell or a solicitation of an offer to buy any of these securities within the United States.

Key Attributes

**Quality Asset Base,
Prolific District**

**>50,000 Ha of strategically located projects, mostly
adjacent to producing mines or advanced projects**

**Large Management
Shareholding**

**Management and Board hold >51% of the Company's
share capital, including Sentient's 12.3%**

**Track record of
Regional Discovery**

**Geological team responsible for discovery/development
of *Cerro Negro*, *Cerro Vanguardia* and *Manantial Espejo***

**Successful
Independent Board**

**Wayne Hubert, Ricardo Auriemma and Kevin Tomlinson
combine deep seated gold exploration expertise**

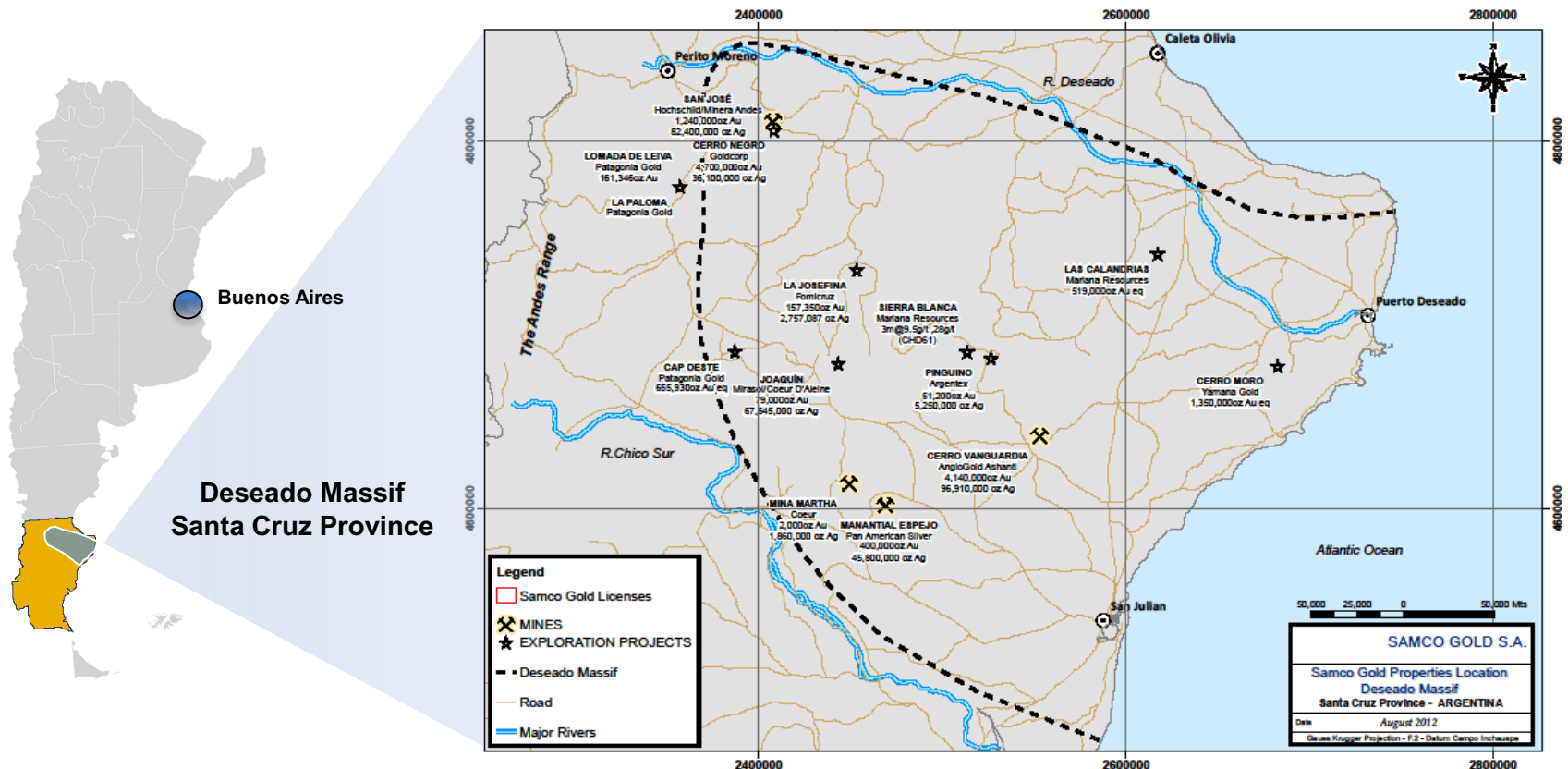
**High Grade Au/Ag
Exploration Upside**

**High grade intercepts at *El Dorado Monserrat*; Bonanza
surface samples at *Corina*, more projects in pipeline**

Gold Exploration in Santa Cruz

The Deseado Massif is a prolific host of gold-silver deposits

- 4 producing mines with multi-million ounce resources, significant near production assets, great exploration upside



Perito Moreno

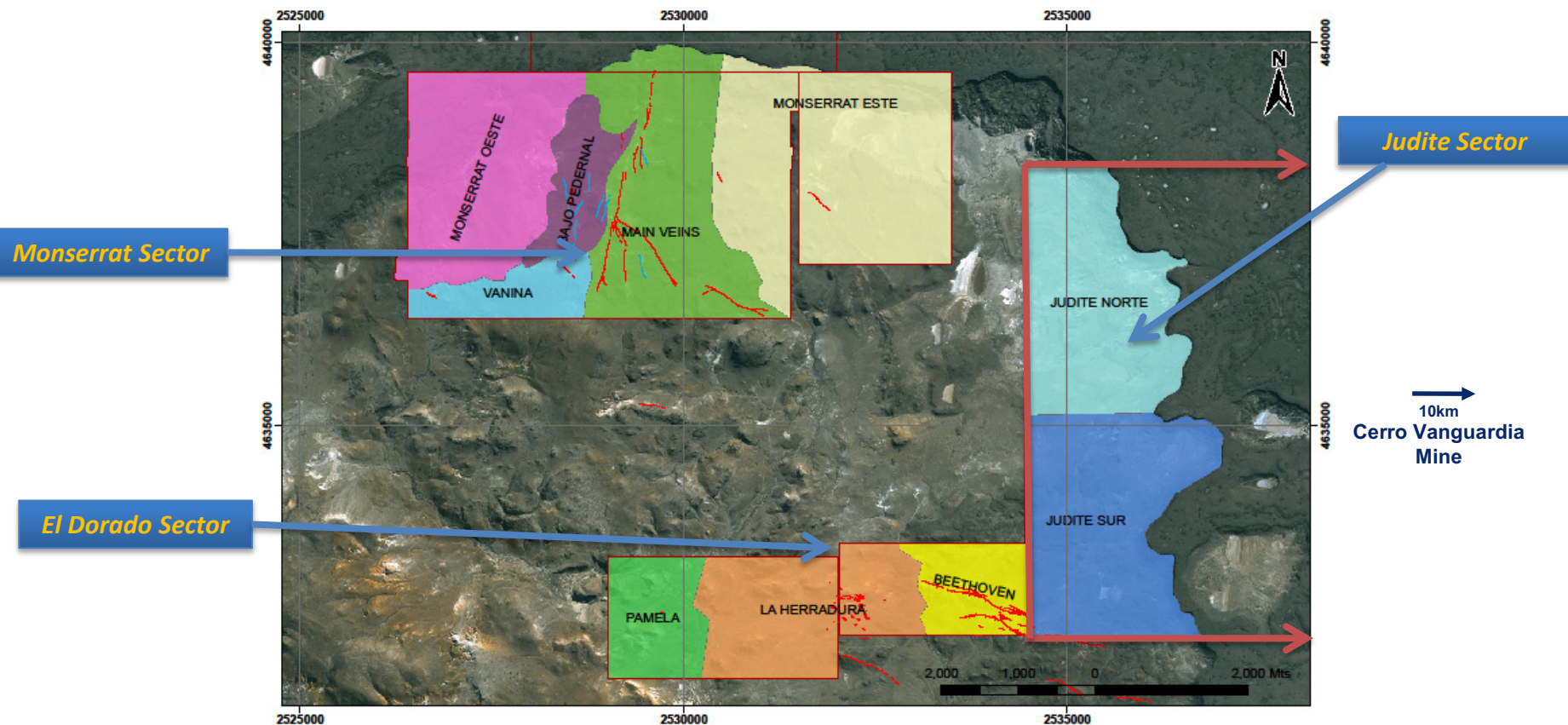
Yacim 1

El Dorado Monserrat



El Dorado Monserrat

High grade gold and silver targets covering over 8,000 Ha contiguous with the western boundary of Anglo Ashanti's >4m oz Au *Cerro Vanguardia* mine

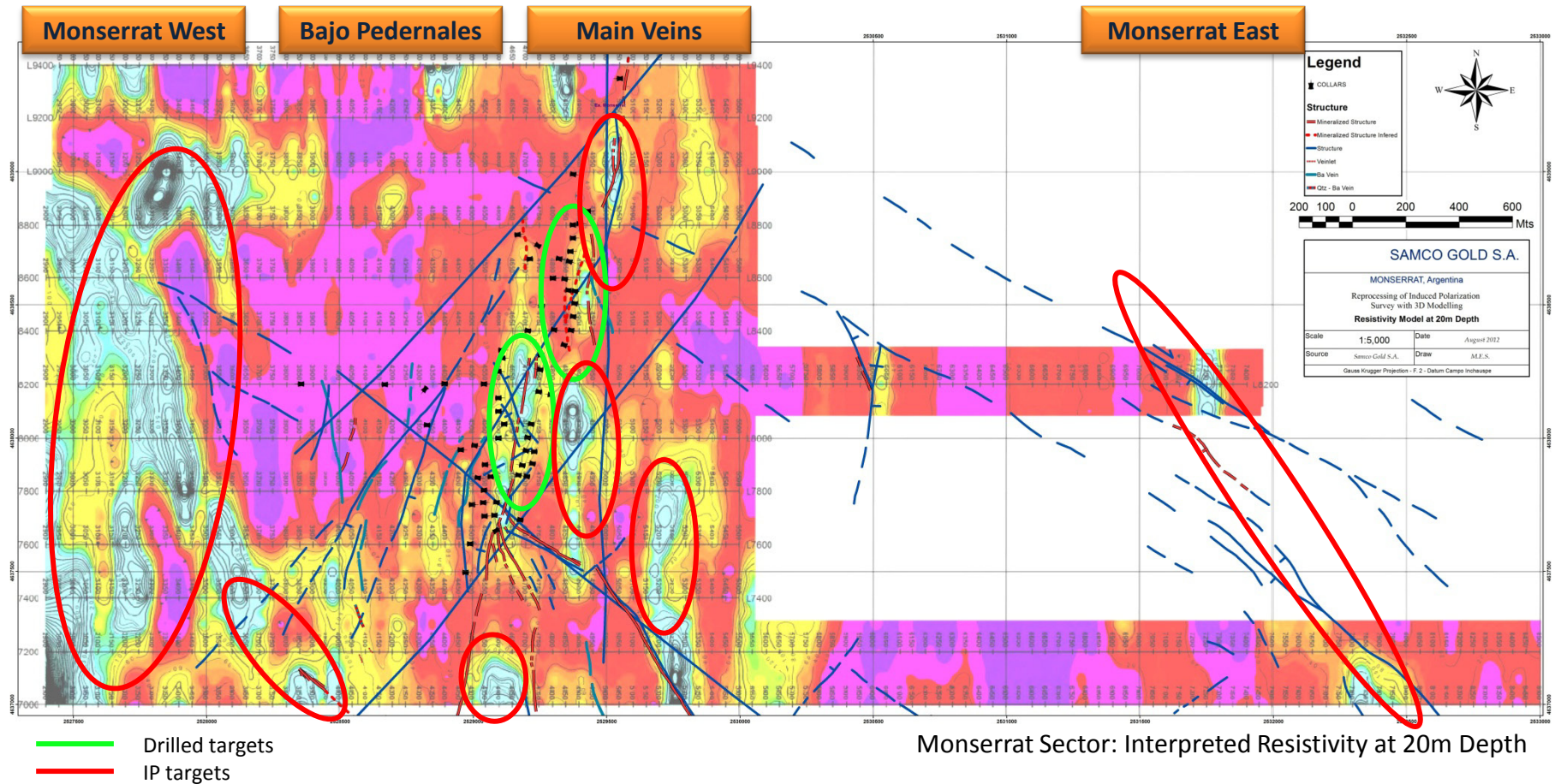


Montserrat Sector



Monserrat Geophysics

IP has identified a number of strong resistivity targets for follow up in addition to those already drilled on the Inés and Camila structures



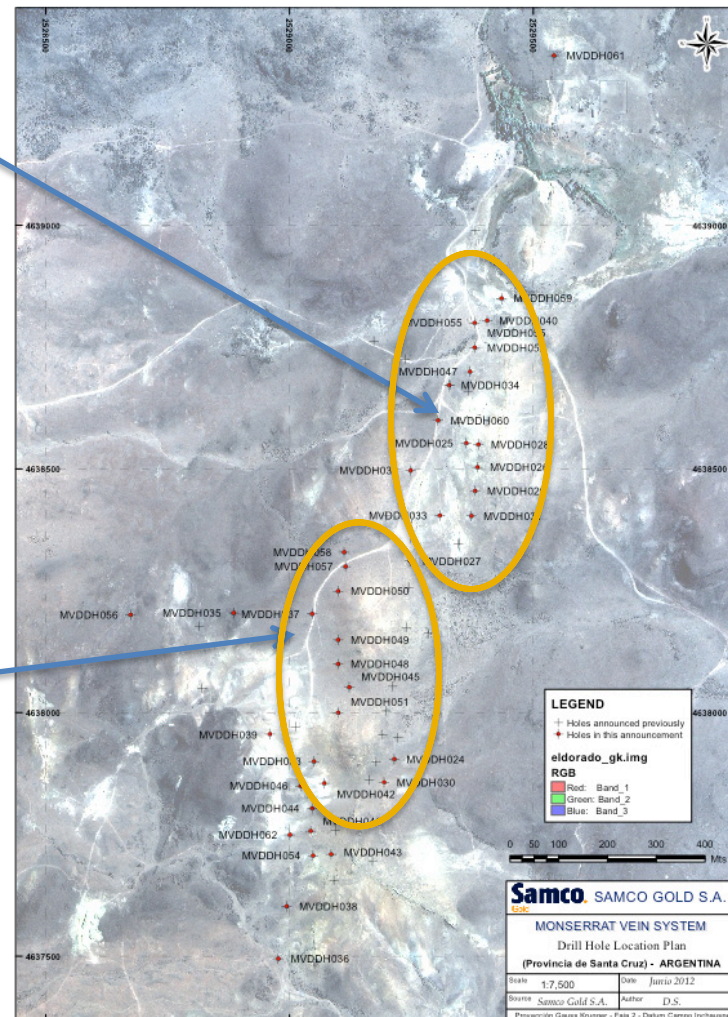
Main Veins - Drilling

Camila Vein

- The highest surface grades of the veins relate to dilational areas within fault segments
- Recent drilling beneath these segments returned low to medium grades
- Further drilling required to north of these areas and in the north of the structure
 - Historical drilling in the north of the vein returned 2.27m of 30.25 g/t Au, 25 g/t Ag and 1.36m of 3.18 g/t Au, 180 g/t Ag.

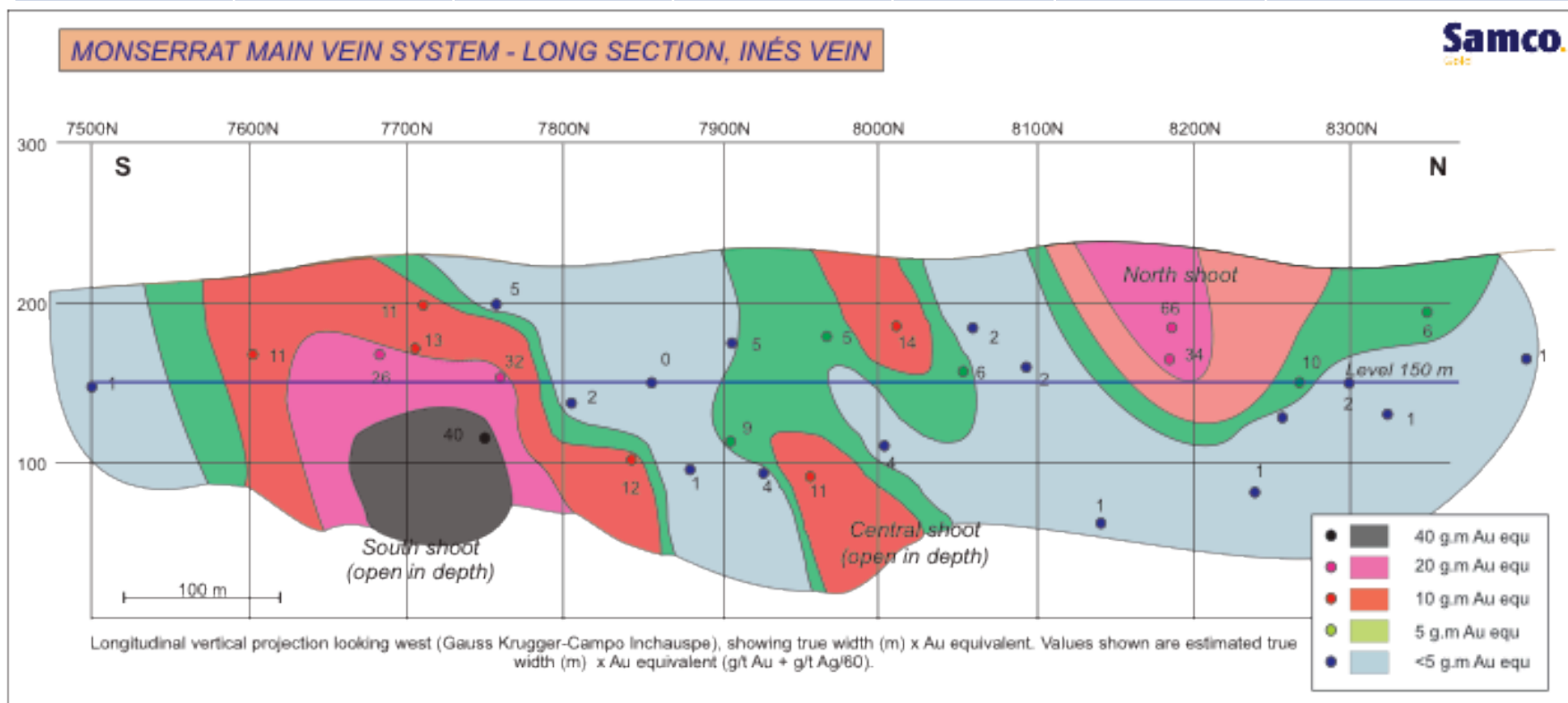
Inés Vein

- Three mineralised shoots identified, separated by waste
 - Strong northerly plunge to structures
- Potential for further shoots to south in other dilational zones



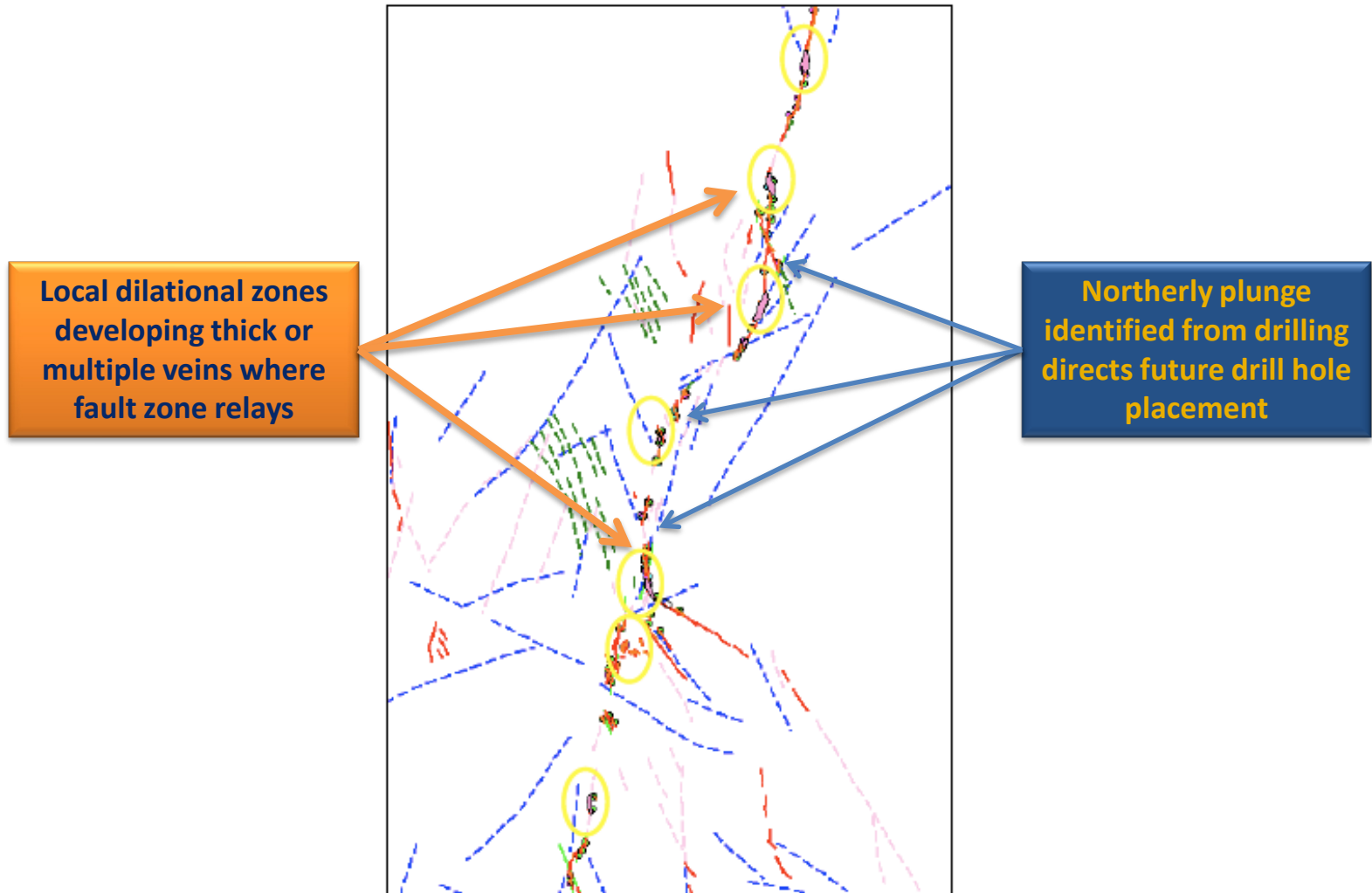
Main Veins - Inés

Shoot	Max Strike (m)	Av True width (m)	Av Au (g/t)*	Av Ag (g/t)*	Av Au equiv. (g/t)* \pm	No. of intersections/Max depth
North	200	1.5	11.8	456	19.4	4/100m
Central	130	1.0	12.3	286	17.1	6/140m (open)
South	250	2.1	6.5	135	8.8	8/115m (open)



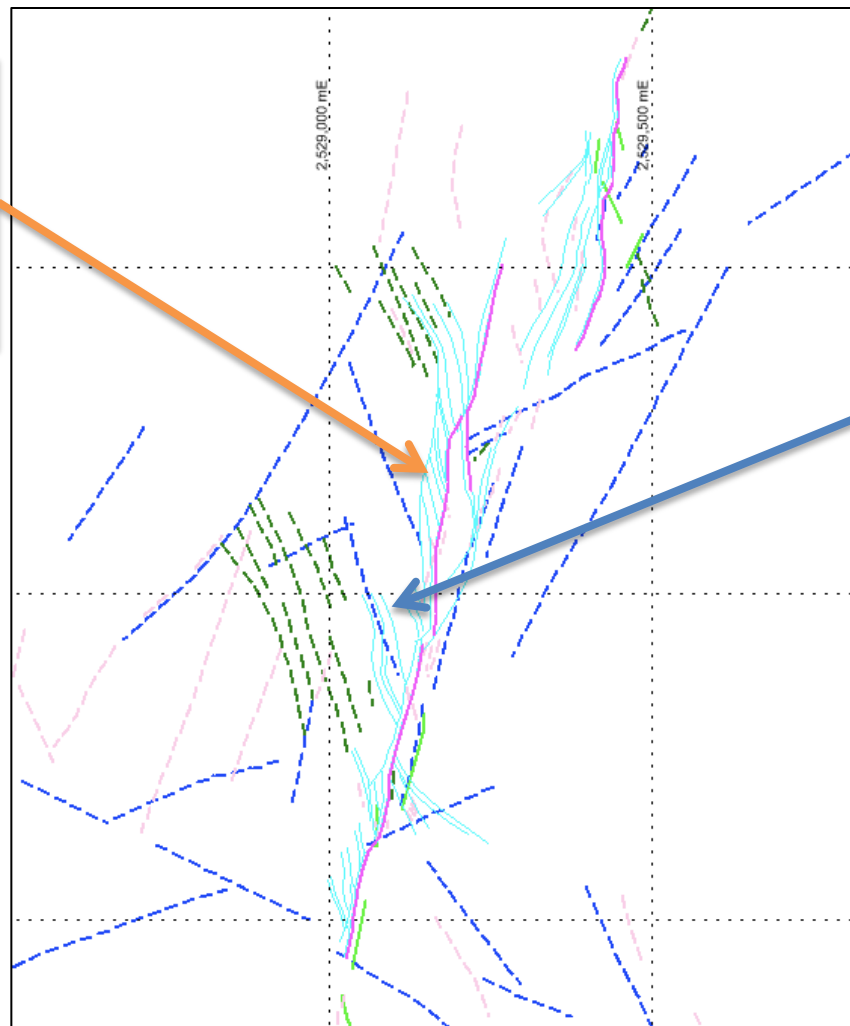
- Av Grade represents the grade for each intersection divided by the number of intersections quoted
- \pm Au Equivalent calculated as $\text{g/t Au} + (\text{g/t Ag}/60)$

Main Veins



Main Veins

Average grade
(including internal
waste) is 2.7 g/t Au,
110 g/t Ag (4.5 g/t Au
equivalent) over 7.5 m
downhole.



Wide Array of Hanging
Wall Veins

MVDDH039 intersected

- 2m of 5.4 g/t Au, 42 g/t Ag from 146m
- 2m of 6.1 g/t Au, 84 g/t Ag from 160m

El Dorado Sector



Herradura

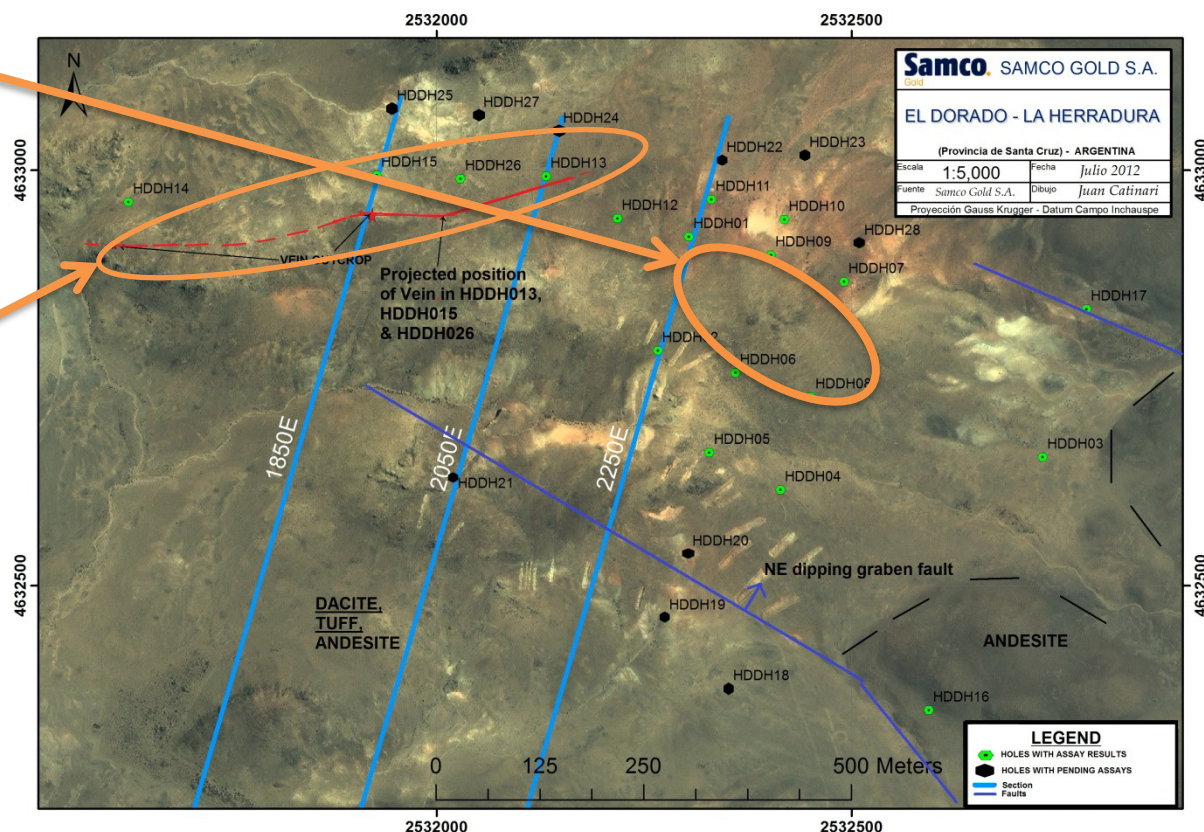
Two Mineralised Structures Identified to date

Quartz Pyrite Breccia

- Intersected by 5 holes to date
- Best intersection:
 - 31m averaging 1.5 g/t Au, 57 g/t Ag from 163 metres (in HDDH011)

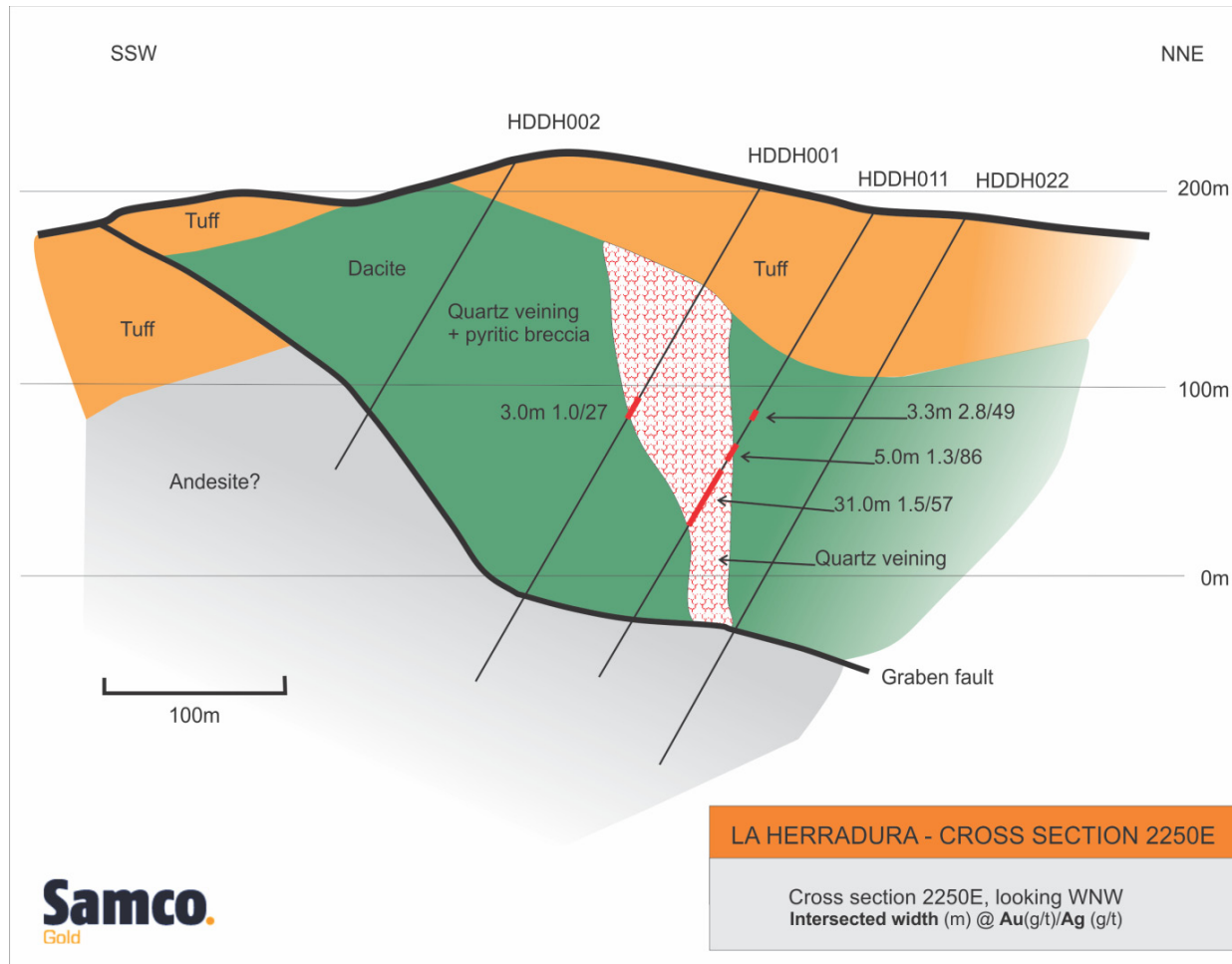
East-West Quartz Vein

- Intersected by four holes to date over 500m of strike
 - HDDH013 intersected 5.5m of 11.2 g/t Au, 73 g/t Ag from 68 m
 - HDDH015 intersected 4m of 2.03 g/t Au, 42 g/t Ag from 148m



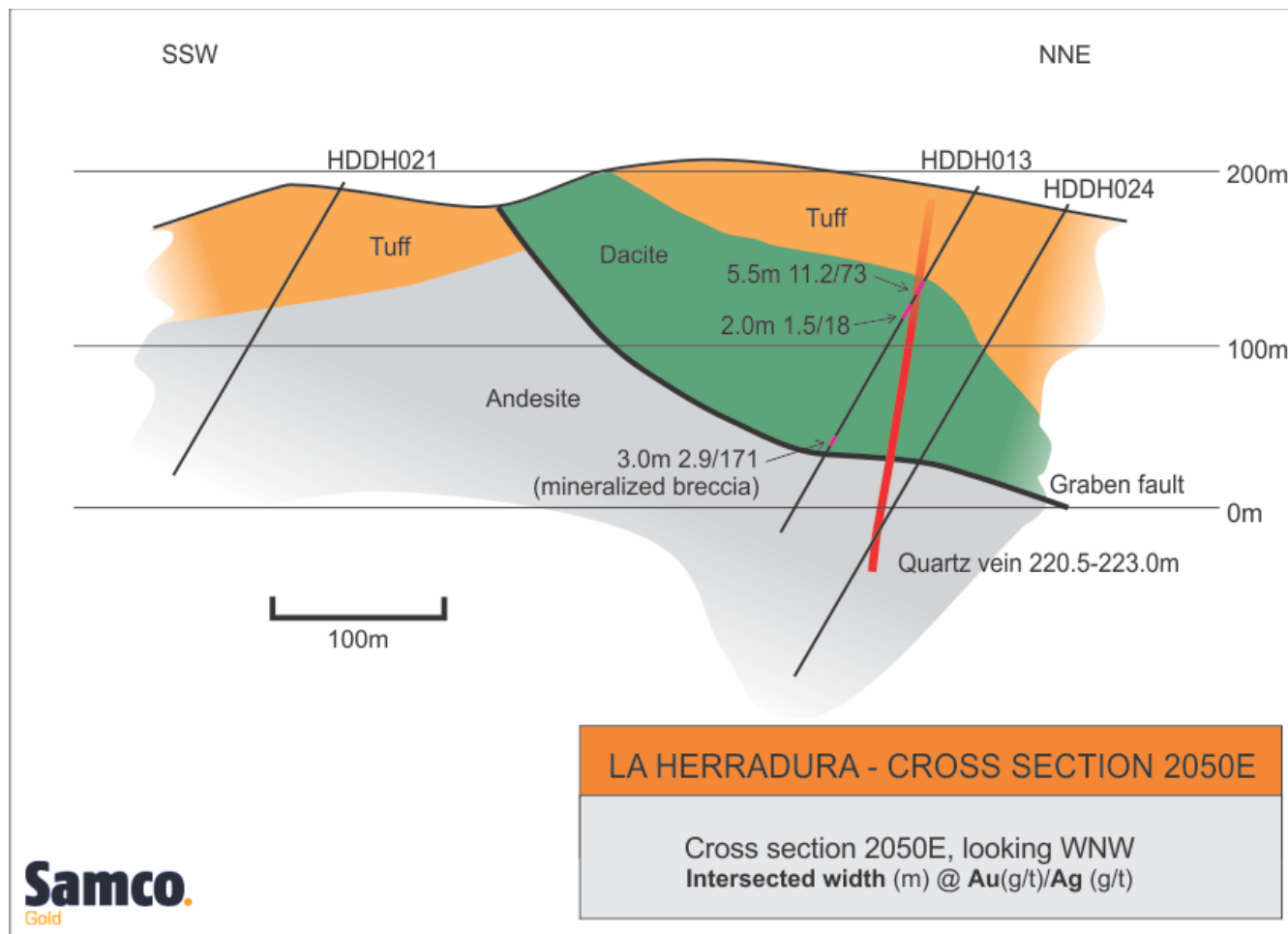
Herradura - Structure

Quartz Pyrite Breccia



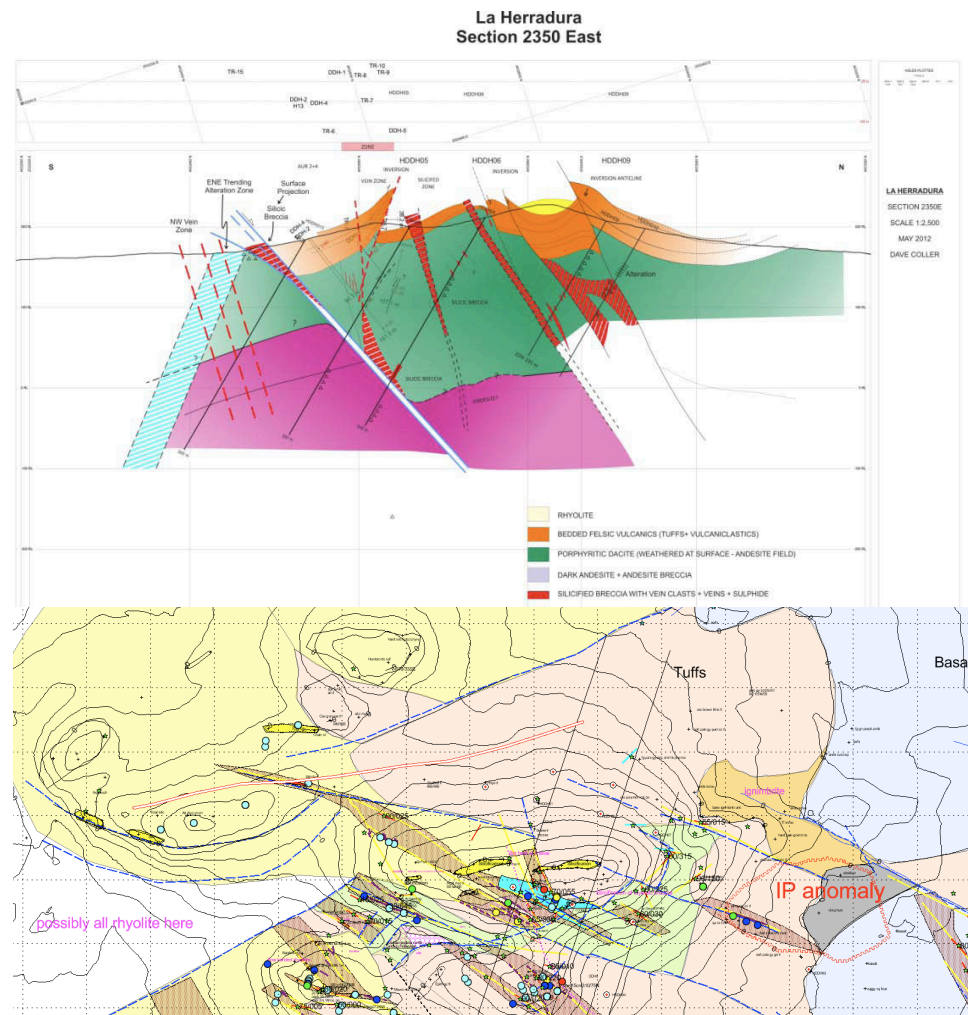
Herradura - Structure

East-West Quartz Vein



Herradura – Coller Report

- “Herradura represents a focused complex of epithermal veins and hydrothermal silica breccias associated with a syn-rift half graben (cf. Manantial Espejo, Cerro Negro, Taupo Volcanic Belt , NZ)
- Herradura-Beethoven now appears to be a more or less continuous vein-fault system extending for more than 5km in strike in a regional WNW corridor **making it a regionally significant system**
- The recognition of the syn-volcanic graben setting of the epithermal system of LaHerradura and the spatial relation to a possible volcanic centre and domal complex **greatly increases the potential for a major economic deposit”**



El Dorado Monserrat – 2H 2012 Program

**Main Veins / Bajo
Pedernales**

**Magnetics / Geological Mapping of New Target Zones /
Preparation for future drilling campaign**

**Monserrat West /
Vanina Vein**

**Magnetics / Geological Mapping and Sampling /
Trenching / Preparation for RC drilling**

**Monserrat East / Inés
East IP Anomalies**

**Geological Mapping and Sampling
Preparation of Drill Program for RC drilling**

**Herradura /
Beethoven**

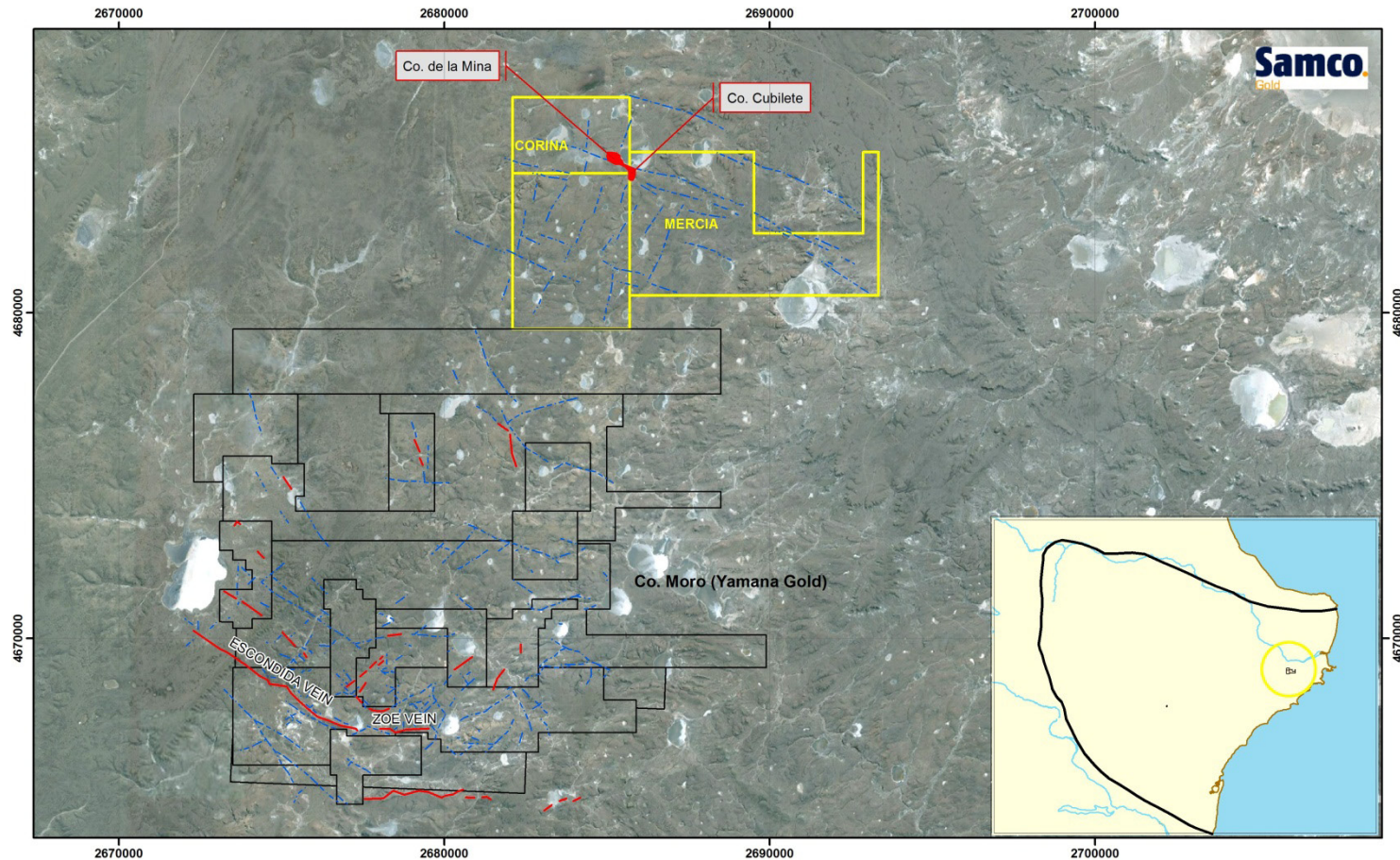
**Magnetics / Geological Mapping and Sampling /
Preparation of Program for Deeper Diamond Drilling**

Corina



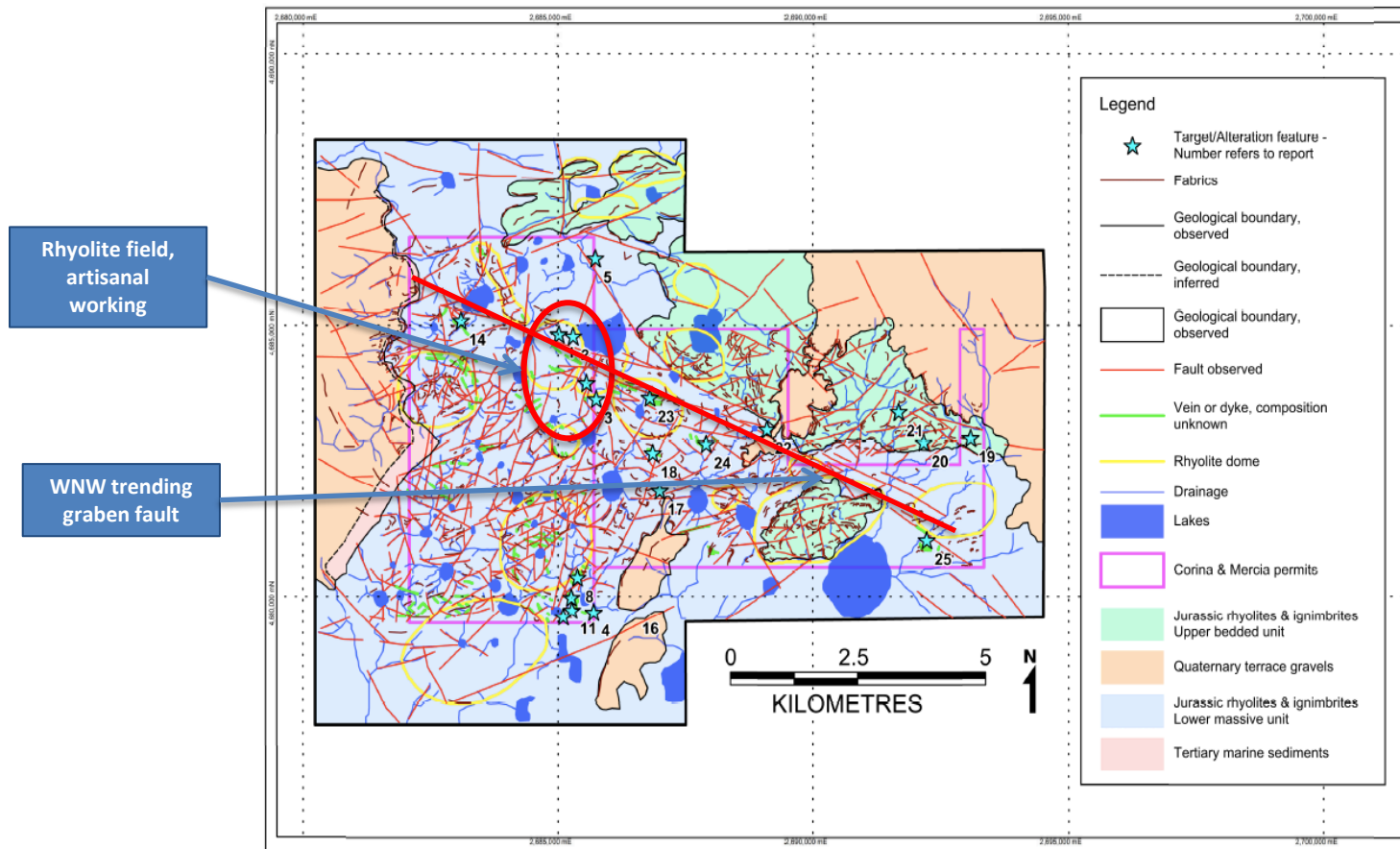
Corina

Corina sits on the northern boundary of *Cerro Moro* (Yamana) and hosts similar WNW graben fault related structures



Corina – New Discovery

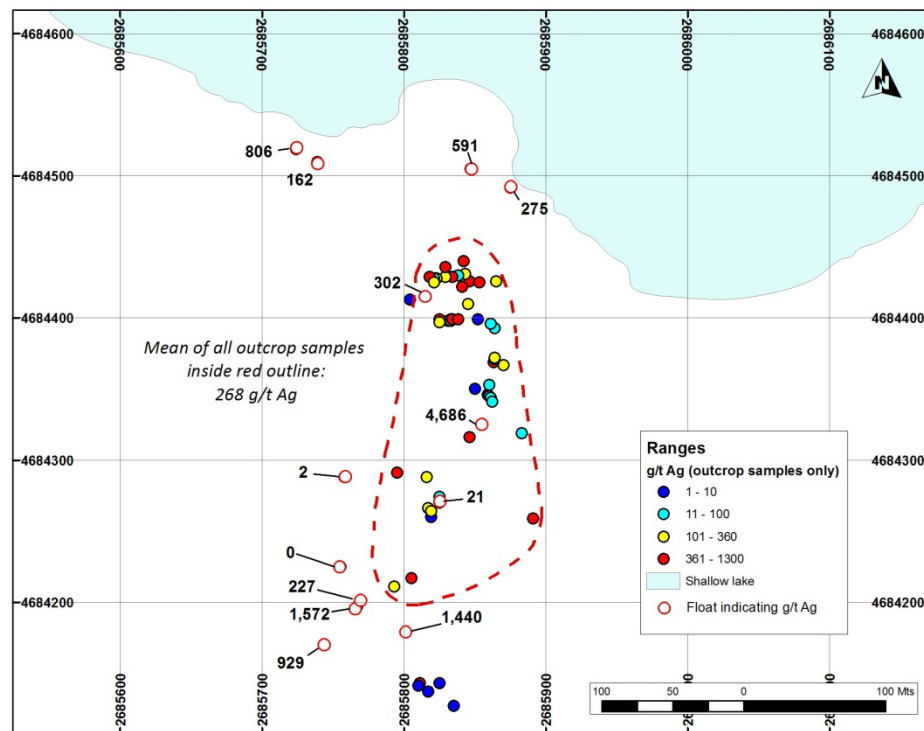
Satellite Imagery Analysis of the broader Corina area identified a number of high quality targets, now confirmed by field verification



Corina – New Discovery

Surface sampling defined an area of high silver values at Cerro Cubilete

- Outcropping dark quartz and quartz-iron oxide breccia has been identified measuring approximately 250m long by up to 90m wide
 - Within this area, 44 outcrop samples averaged 268 g/t Ag, with a maximum value of 1,295 g/t Ag
 - Two other float samples inside the area of outcrop (and not included in the average grade of 268 g/t Ag cited above) assayed 302 and 4,668 g/t Ag
- A second target, Cerro de la Mina, lies c.600m NW of Cerro Cubilete and hosts a strong Mo anomaly



Corina – New Discovery

Targeting progress to a “drill ready” project by year end

Complete

- ✓ Reconnaissance/Ground Truthing
- ✓ Preliminary Mapping
 - ✓ Floats and Chips
 - ✓ Channel Samples

Next Steps

- Ground Magnetics
- Substantial geochemical surface sampling campaign
 - Trenching
 - LAG

RC Drilling of Key Targets



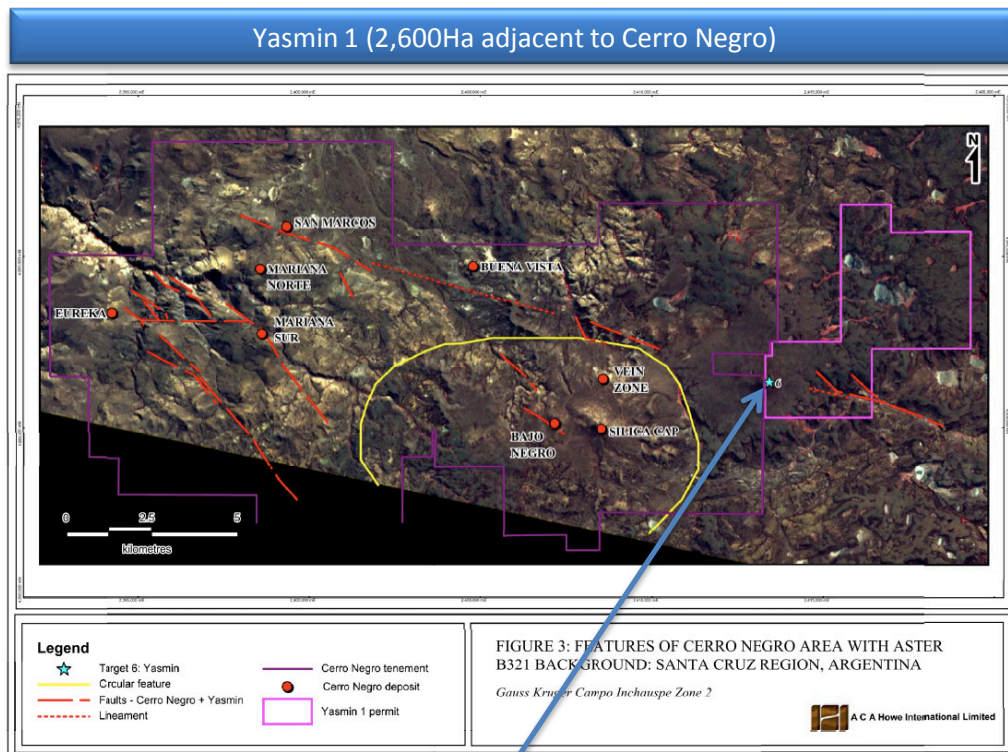
Other Projects

Phase 1 Field Work will start on 2Gs (Ginette and Giancarla), Yasmin 1 and Maribel (I and III) once field conditions allow

Phase 1 Program

- Reconnaissance/Ground Truthing
- Preliminary Mapping
 - Floats and Chips
 - Channel Samples
- Ground Magnetics or IP (depending on conditions)
- Substantial geochemical surface sampling campaign
 - Trenching
 - MMI
 - LAG

Targeting 3 more “drill ready” projects by year end



“Sub-basalt positive topography with associated alteration, similar to the Silica Cap deposit & aligned with Buena Vista & San Marcos deposits at Cerro Negro”



**Quality Asset Base, Prolific
District**

**High Grade Au/Ag Exploration
Upside**

**Track Record of Regional
Discovery**

**Experienced and Successful
Management and Board**

**>51% Insider Ownership
Shareholder value a priority**

Charles Koppel
Executive Chairman
e: ck@samcogold.com

Paul Richardson
Chief Executive Officer
e: pr@samcogold.com