

PREMIER

Gold Mines Limited

PREMIER GROWTH – PREMIER OPPORTUNITY

September 2012

- PROVEN MANAGEMENT
- PROVEN GOLD DISTRICTS
- SAFE MINING JURISDICTIONS

Symbol: PG
Exchange: TSX

1-888-346-1390
www.premiergoldmines.com

DISCLAIMER:

This presentation may contain "forward looking information" within the meaning of Canadian securities legislation, which are based on the opinions and estimates of management and are subject to a variety of risks and uncertainties and other factors that could cause actual events or results to differ materially from those projected in the forward looking information. Such risks and uncertainties include, but are not limited to, risks associated with the mining industry, the risk of commodity price and foreign exchange rate fluctuations, the ability of Premier to fund the capital and operating expenses necessary to achieve the business objectives of Premier, as well as those risks described in public disclosure documents filed by Premier. Due to the risks, uncertainties and assumptions inherent in forward-looking information, prospective investors in securities of Premier should not place undue reliance on these forward-looking information.

This presentation has been completed by Premier. Certain corporate projects referred to herein are subject to agreements with third parties who have not prepared, reviewed nor approved this presentation. The presentation is not intended to reflect the actual plans or exploration and development programs contemplated for such projects.

Historical estimates contained herein have been prepared by previous operators and a qualified person has not done sufficient work to classify the historical estimates as current mineral resources.



WHY PREMIER??

- **SAFE, ACCESSIBLE MINING JURISDICTIONS:**
 - **Nevada, Ontario**
- **MULTIPLE HIGH-GRADE PROJECTS:**
 - **Cove & Saddle in Nevada, Trans-Canada & Red Lake in Ontario**
- **SOLIDIFYING MANAGEMENT TEAM TO FACILITATE CORPORATE GROWTH:**
 - **Ebe Scherkus joined as Director and Chairman (June 2012)**
 - Formerly President and COO of Agnico Eagle Mines for 27 years
 - Strong Mine and Corporate development experience
 - **Paul Huet joined Premier as Chief Operating Officer**
 - Formerly Mine Manager at Midas Gold Mine (Newmont, Nevada)
 - Formerly General Manager at Hollister Mine (Great Basin, Nevada)
- **HISTORY OF CORPORATE DEVELOPMENT:**
 - **Wolfden Resources, Agnico Eagle, newly formed royalty company**
- **STRONG BALANCE SHEET:**
 - **Approximately \$55 million in cash**
 - **To be the largest shareholder of Premier Royalty Corporation**



Ewan Downie – President, CEO, Director

Founder and CEO of Wolfden Resources Inc. (predecessor to Premier) - acquired in 2007 by Zinifex for \$361 Million (+1500% from IPO). Award winning exploration history that includes multiple discoveries.

Ebe Scherkus – Chairman, Director

Extensive mineral exploration and mine development experience – formerly President and Chief Operating Officer of Agnico-Eagle Mines Ltd..

Paul Huet – Chief Operating Officer

Over 24 years of mining experience in both Canada and the United States. Formerly the General Manager for Nevada Operations at Great Basin Gold, and Mine Manager and Supervisor at Newmont's Midas Mining Operations.

Stephen McGibbon – Exec VP Corporate & Project Development

Chief Geologist and Exploration Manager at Goldcorp's flagship Red Lake Gold Mine - led the team that discovered the "High Grade Zone".

Brian Morris – VP Exploration

23 years of exploration/development experience: held senior geologist positions at Great Basin Gold (Hollister Gold Mine), Newmont's Nevada District Exploration (including the Midas Mine), and Barrick's (high-grade Meikle Mine).

Track record of success
FOCUSED ON CORPORATE GROWTH



THE PREMIER DIFFERENCE

FOCUSED ON PROVEN GOLD DISTRICTS

- Premier holds strategic land packages located in the heart of several of North America's prolific gold districts.
- **Red Lake** - Two active joint venture projects with Goldcorp in the heart of the high-grade capital for gold.
- **Trans-Canada Project** - One of Canada's 'premier' near-development projects.
- **Premier Gold USA** – Advanced-stage gold projects in the heart of two of the world's major gold districts, the Carlin & Battle Mountain Trends.

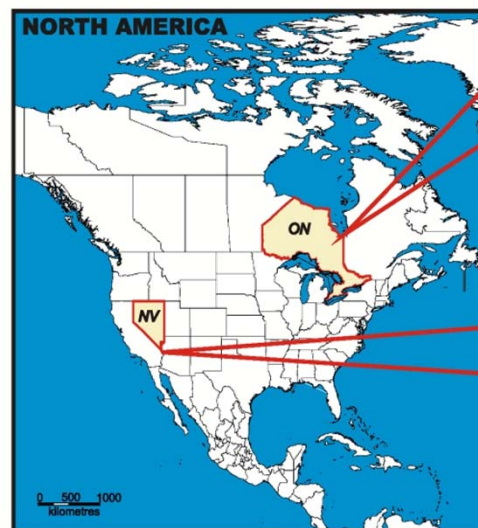


Red Lake



Trans-Canada

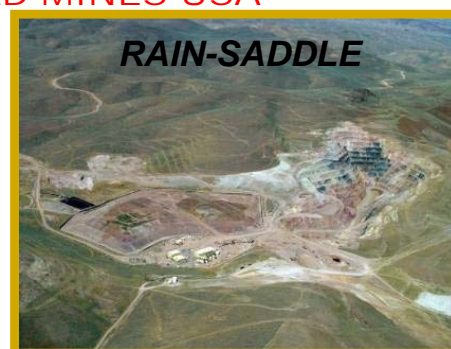
✓ **PROVEN GOLD CAMPS
LOW POLITICAL RISK**



PREMIER GOLD MINES USA



COVE PROJECT



RAIN-SADDLE

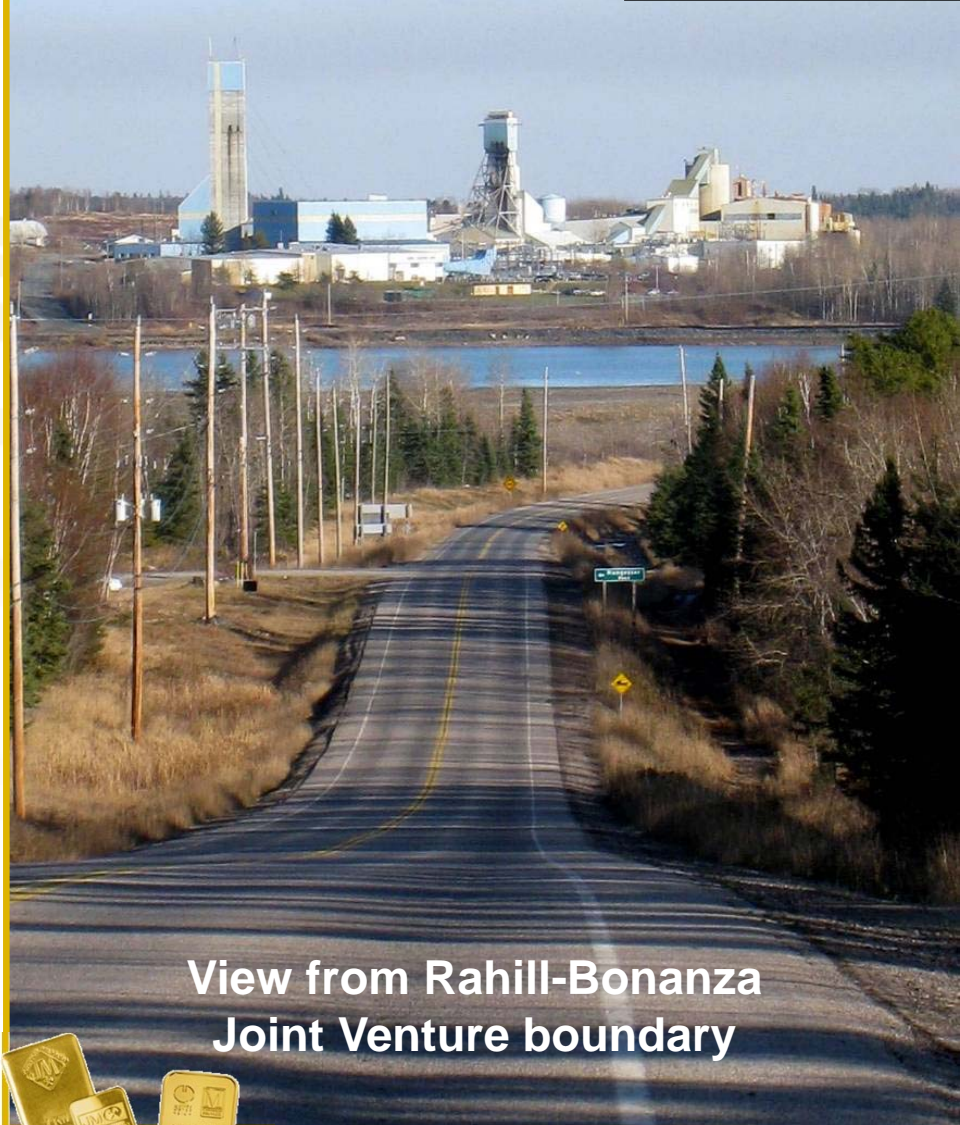
✓ **OUTSTANDING
INFRASTRUCTURE**



THE PREMIER DIFFERENCE

**Adjacent to the World's
Richest Gold Mine**

**RED LAKE PROJECTS
PREMIER OPPORTUNITY!!**



**View from Rahill-Bonanza
Joint Venture boundary**



**Tram Development on JV for
Balance of 2012**



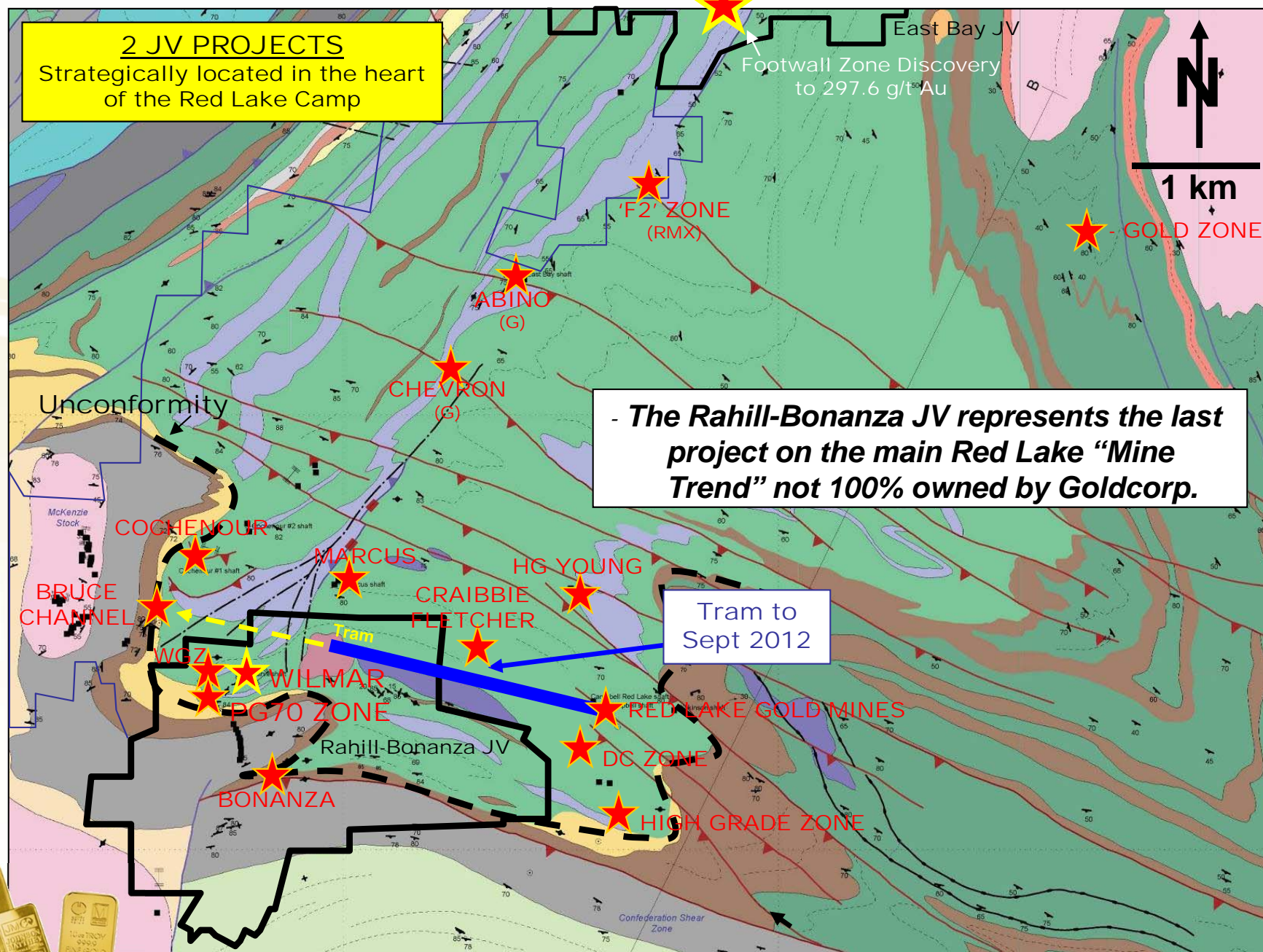
PREMIER

Gold Mines Limited

A World Of Opportunity

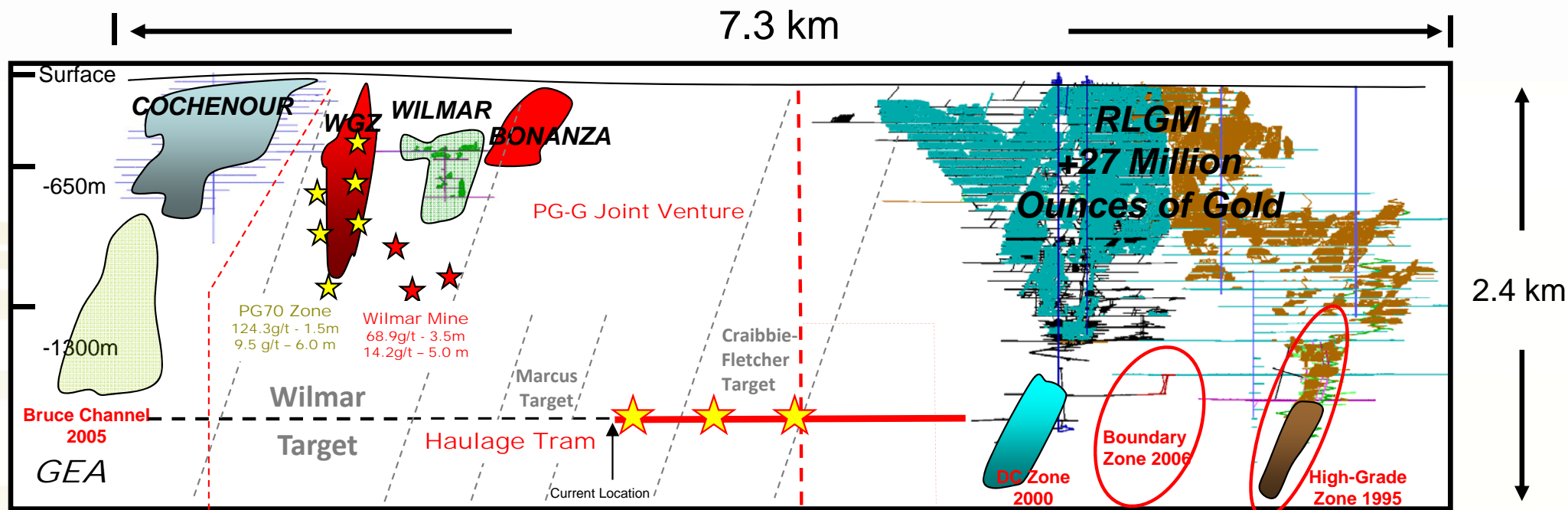
THE PREMIER DIFFERENCE

RED LAKE – 2 Core Projects



www.premiergoldmines.com

PG:TSX

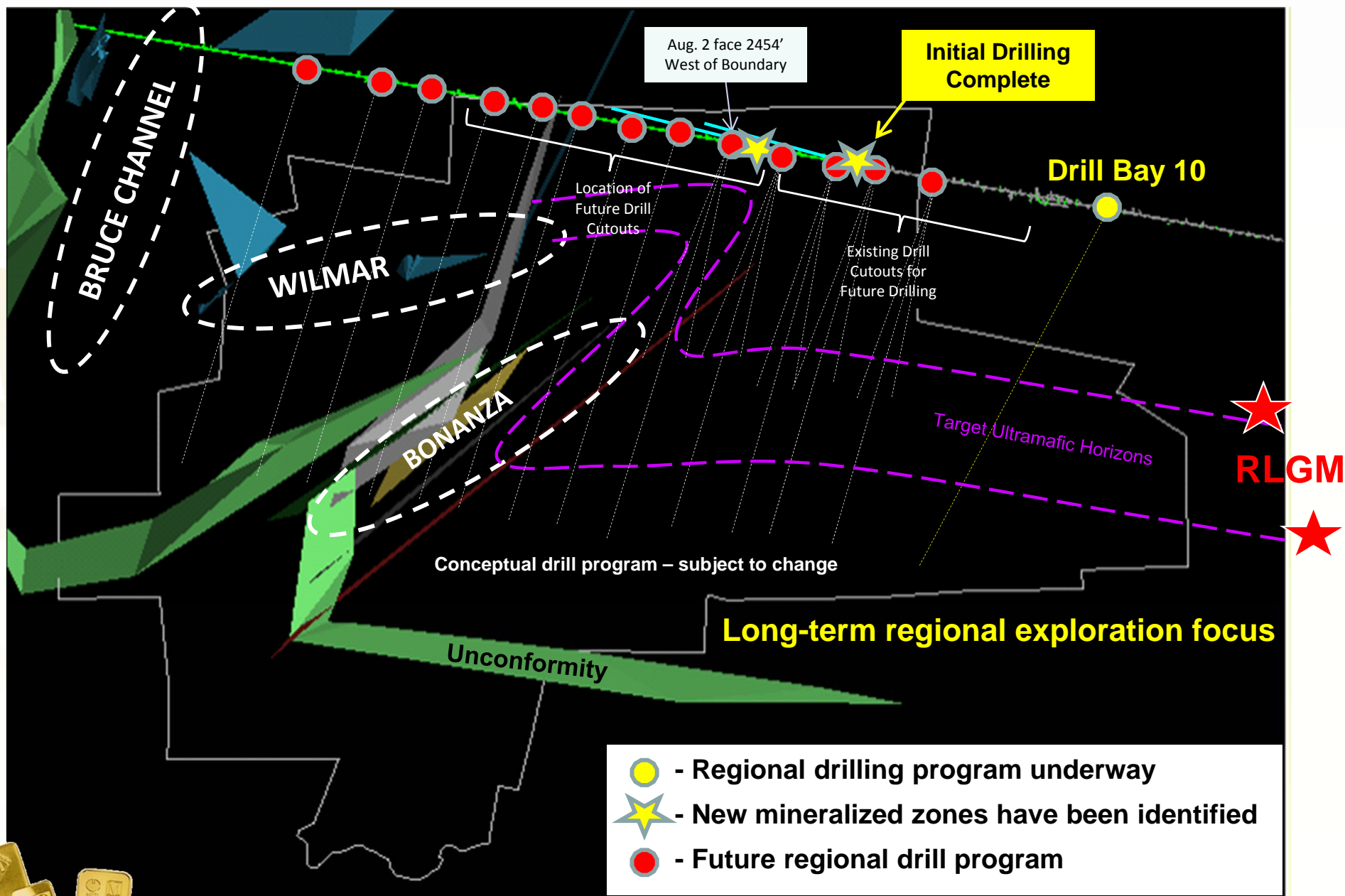


★ - Qtz-Carb Veining

Longitudinal Section Looking North

- ***All tram development for the remainder of the year will be on JV ground***
- ***New prospective Qtz-Carb structures have been intersected in tram***
- ***Deep exploration drilling has commenced from the Tram***
- ***Surface exploration drilling is testing a newly identified structure***





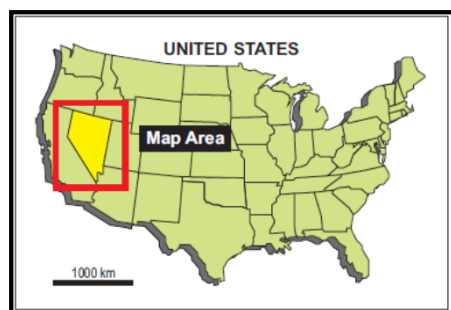
COVE GOLD PROJECT
- **BATTLE MOUNTAIN/EUREKA TREND** -
High-Grade gold project – wide open for expansion

SOUTH CARLIN PROJECTS (Saddle-Rain)
- **IN THE HEART OF THE CARLIN TREND** -
**+110 M OUNCES OF PRODUCTION, RESERVES,
RESOURCES & MINERAL INVENTORY**



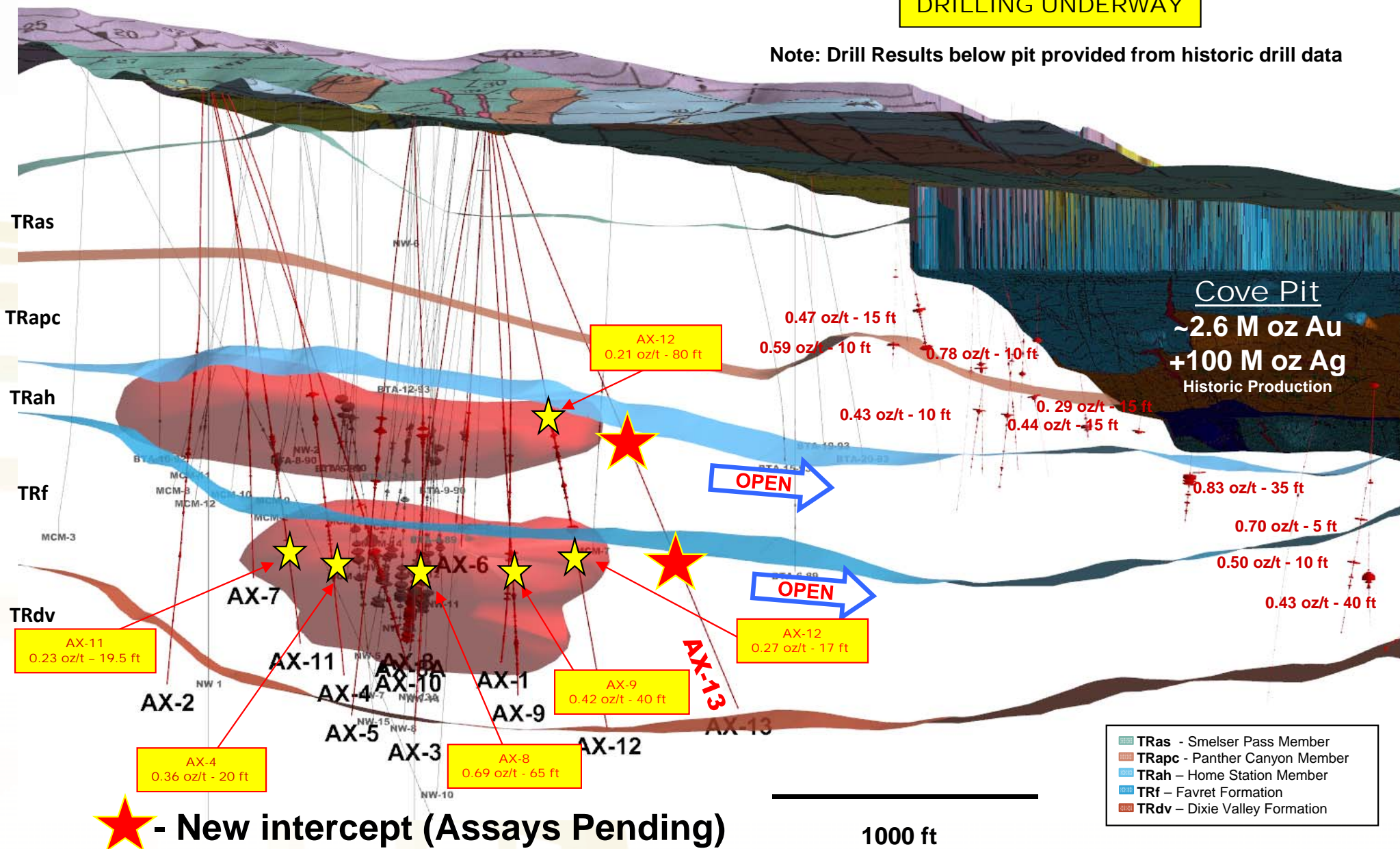
U.S. IS CORNERSTONE FOR
THE NEXT PHASE OF
CORPORATE GROWTH

Additional opportunities being assessed



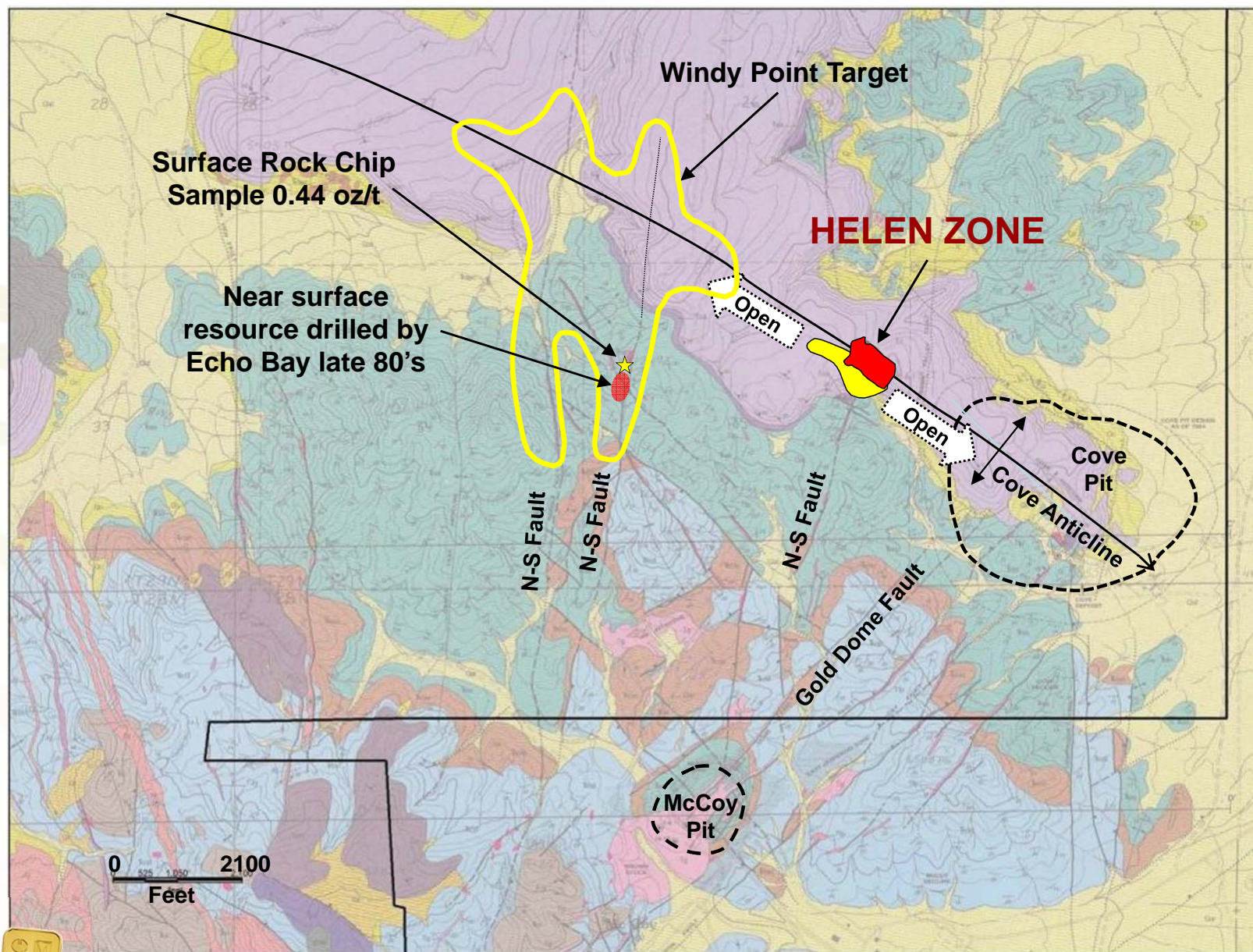
DRILLING UNDERWAY

Note: Drill Results below pit provided from historic drill data

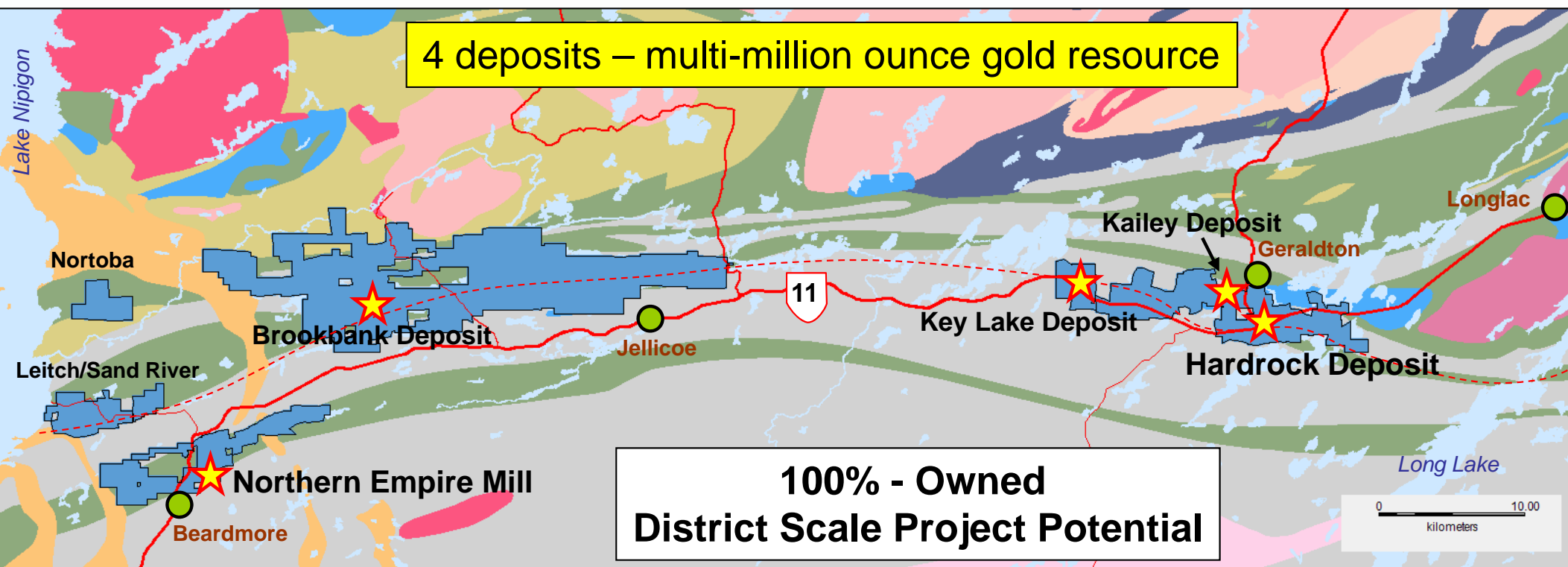


COVE PROJECT, NEVADA

EXPLORATION TARGETS



Project has evolved from exploration (2008-11) towards targeted development (2012-14)

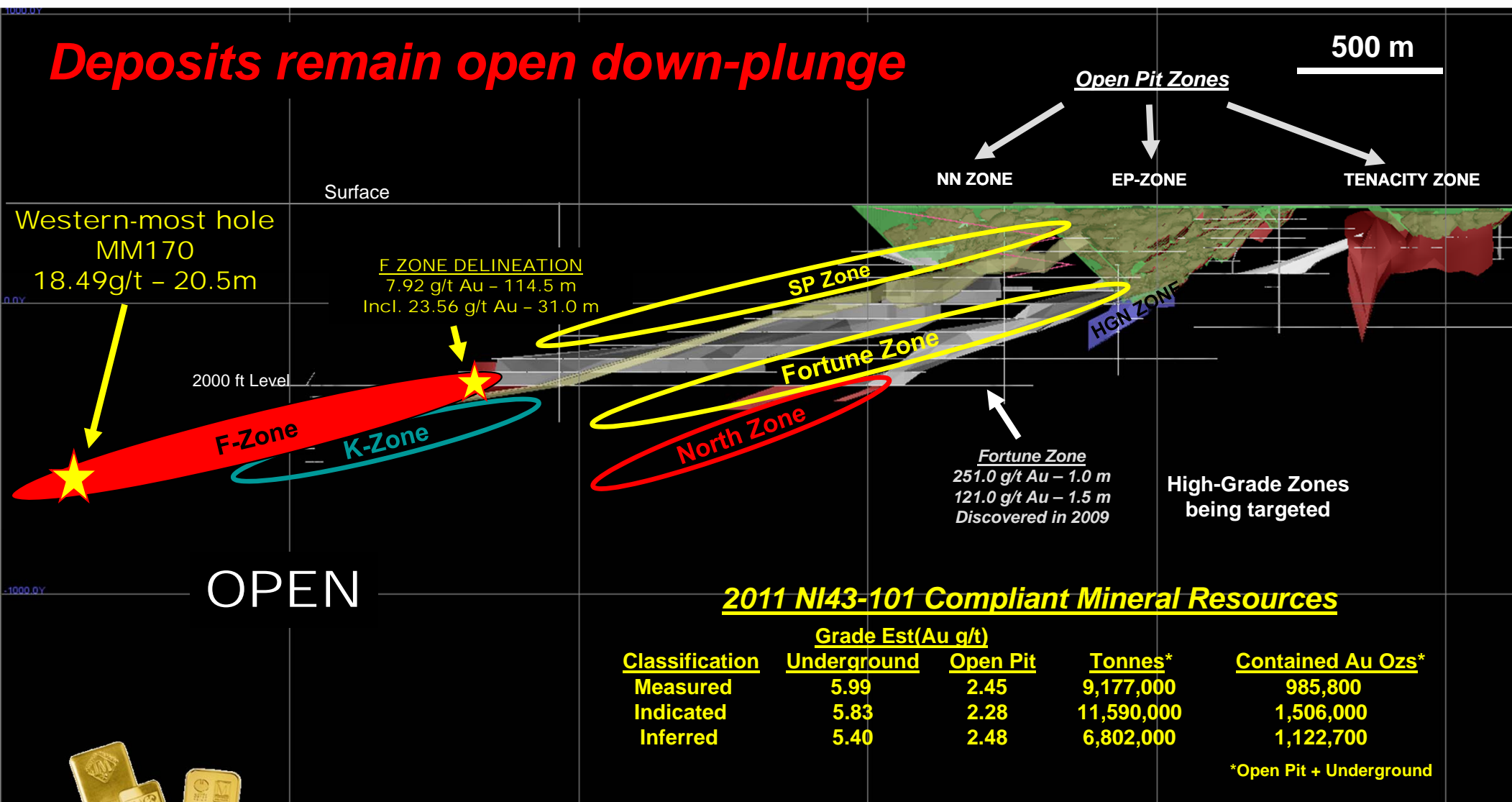


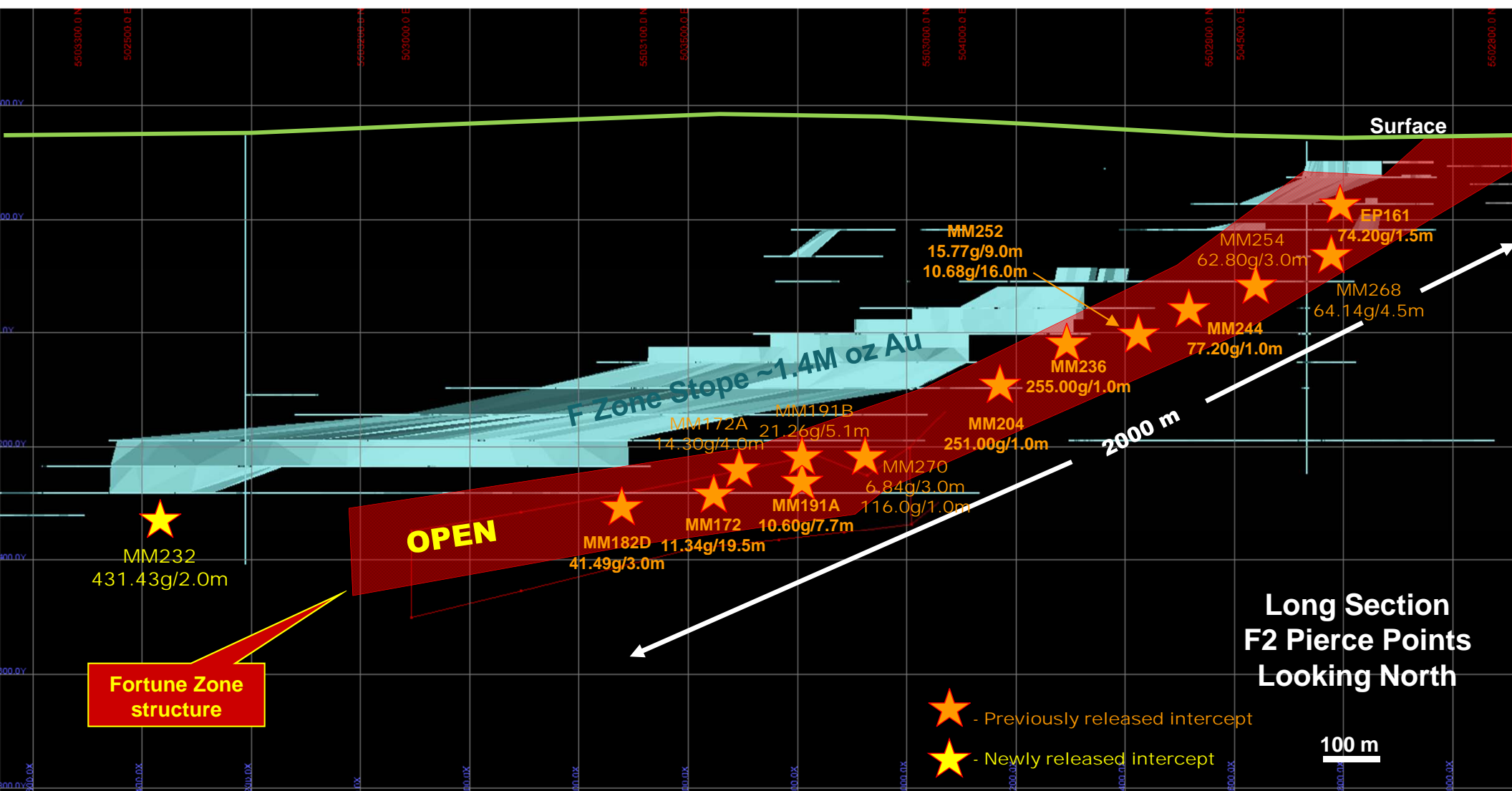
Key Highlights:

- 1) 2012 Mineral Resource Estimation Progress Update
- 2) Permitting for Advanced Exploration underway
- 3) Multiple Deposits – Multiple development scenarios



Hardrock 3D Mine Model in Long Section View looking North





Target area for defining high-grade gold resources (2012)





Northern Empire Mill

Hardrock Deposit

INFRASTRUCTURE

- Full-service communities of Geraldton and Beardmore.
- Access to natural gas, power, & the Trans-Canada Hwy.
- Multiple deposits offer multiple development options.



- Premier Gold - Canada Division:**Red Lake JV Projects**

- *Red Lake Mine tram development on JV for the balance of 2012*
- *Ongoing drill results from tram exploration program*

Trans-Canada Project

- *Updated resource estimate expected in near future*
- *Mining scenarios being evaluated – future Advanced Exploration*

- Premier Gold - US Division:

- *Cove acquisition provides potential pathway for near-term mine development – huge exploration upside*
- *Ongoing drill program continues to expand mineralized horizon*

- Premier Corporate:

- *Planned royalty spin-out to occur in Q4-2012*
- *Growth through acquisition – strategic focus high-grade gold deposits*



Premier Gold Mines Limited

KEY CONTACTS:

Ewan Downie
President & CEO

(807) 346-1390

Ebe Scherkus
Chairman

(416) 317-4877

Stephen McGibbon
Executive Vice President
Corporate & Project Development

(613) 376-6782

Brian Morris
Vice President Exploration

(775) 753-9332

Matthew Gollat
Corporate Development
Investor Relations

(807) 346-1397

A World of Opportunity

- Premier Performance – Premier Growth – Premier Opportunity -

Symbol: PG

Exchange: TSX