



PREMIER

Gold Mines Limited

PREMIER GROWTH – PREMIER OPPORTUNITY

April 2012

- PROVEN MANAGEMENT
- PROVEN GOLD DISTRICTS
- SAFE MINING JURISDICTIONS

Symbol: PG
Exchange: TSX

1-888-346-1390
www.premiergoldmines.com

DISCLAIMER:

This presentation may contain "forward looking statements" within the meaning of Canadian securities legislation, which are based on the opinions and estimates of management and are subject to a variety of risks and uncertainties and other factors that could cause actual events or results to differ materially from those projected in the forward looking statements. Such risks and uncertainties include, but are not limited to, risks associated with the mining industry, the risk of commodity price and foreign exchange rate fluctuations, the ability of Premier to fund the capital and operating expenses necessary to achieve the business objectives of Premier, as well as those risks described in public disclosure documents filed by Premier. Due to the risks, uncertainties and assumptions inherent in forward-looking statements, prospective investors in securities of Premier should not place undue reliance on these forward-looking statements.

Historical Resources have been estimated by previous operators and are not NI 43-101 compliant.



Ewan Downie – President, CEO, Director

Founder and CEO of Wolfdan Resources Inc. (predecessor to Premier) - acquired in 2007 by Zinifex for \$361 Million (+1500% from IPO). Successful exploration history that includes multiple discoveries.

Richard Hall – Chairman, Director

Formerly President and CEO of Metallica Resources, Northgate (acquired by AuRico) and Chairman of Grayd (acquired by Agnico). History of growing companies from inception to production.

Paul Huet – Chief Operating Officer

Over 24 years of mining experience in both Canada and the United States. Formerly General Manager for Nevada Operations at Great Basin Gold, and Mine Manager and Supervisor at Newmont's Midas Mining Operations.

Stephen McGibbon – Exec VP Corporate & Project Development

Chief Geologist and Exploration Manager at Goldcorp's flagship Red Lake Gold Mine - led the team that discovered the "High Grade Zone" one of the most important gold discoveries in the past several decades.

Brian Morris – VP Exploration

23 years of exploration/development experience. Instrumental in permitting and re-opening Hecla's Equity Mine in Colorado, formerly senior geologist at the Hollister Gold Mine (Great Basin Gold), Newmont's Nevada District Exploration (including the Midas Mine), and production geologist at the high-grade Meikle Mine in Nevada (Barrick).

Track record of success
FOCUSED ON CORPORATE GROWTH



FOCUSED ON PROVEN GOLD DISTRICTS

- Premier holds strategic land packages located in the heart of several of North America's prolific gold districts.
- **Red Lake** - Two active JV's with Goldcorp
 - Tram on JV for balance of 2012
 - Deep exploration in H2 - 2012
- **Trans-Canada Project** – 100% owned
 - Near term development potential
 - Revised resource in Q2 - 2012
- **Premier Gold USA** - Focus of Premier's aggressive growth initiative. Two advanced-stage projects.



✓ **PROVEN GOLD CAMPS
LOW POLITICAL RISK**

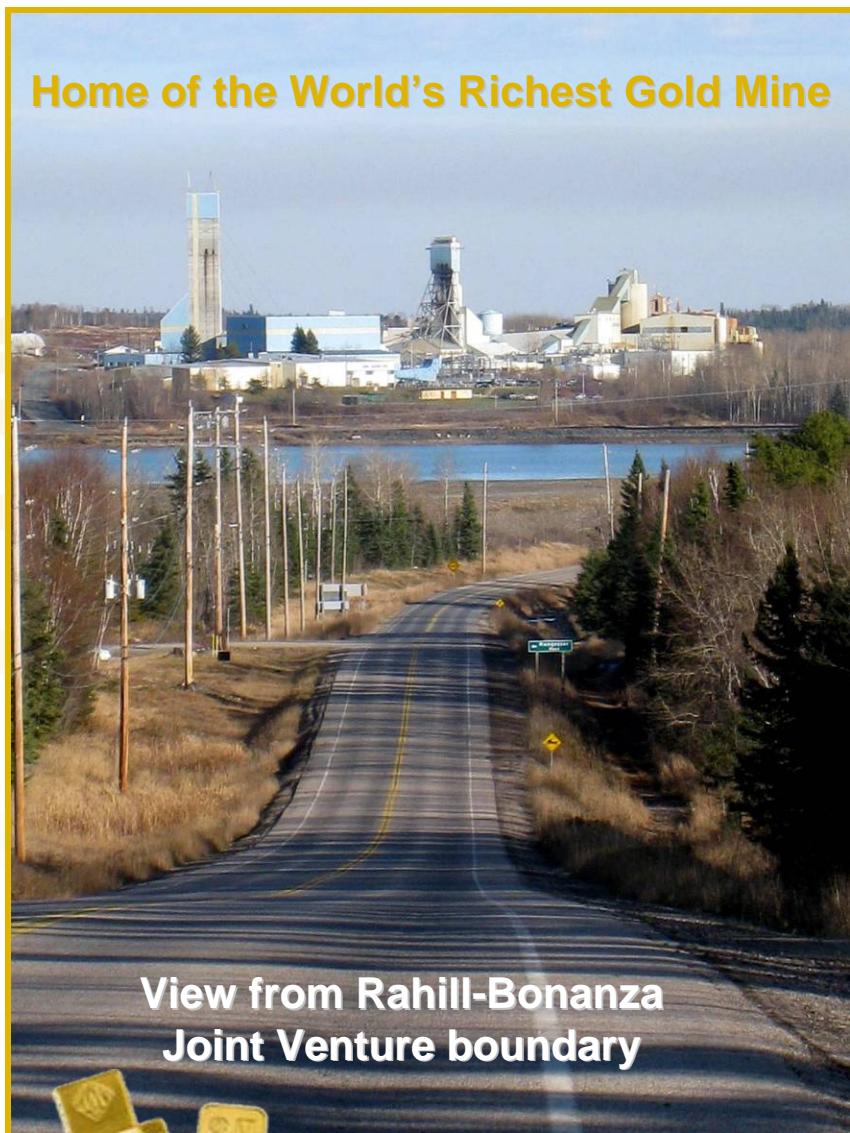


PREMIER GOLD MINES USA



✓ **OUTSTANDING
INFRASTRUCTURE**





Home of the World's Richest Gold Mine

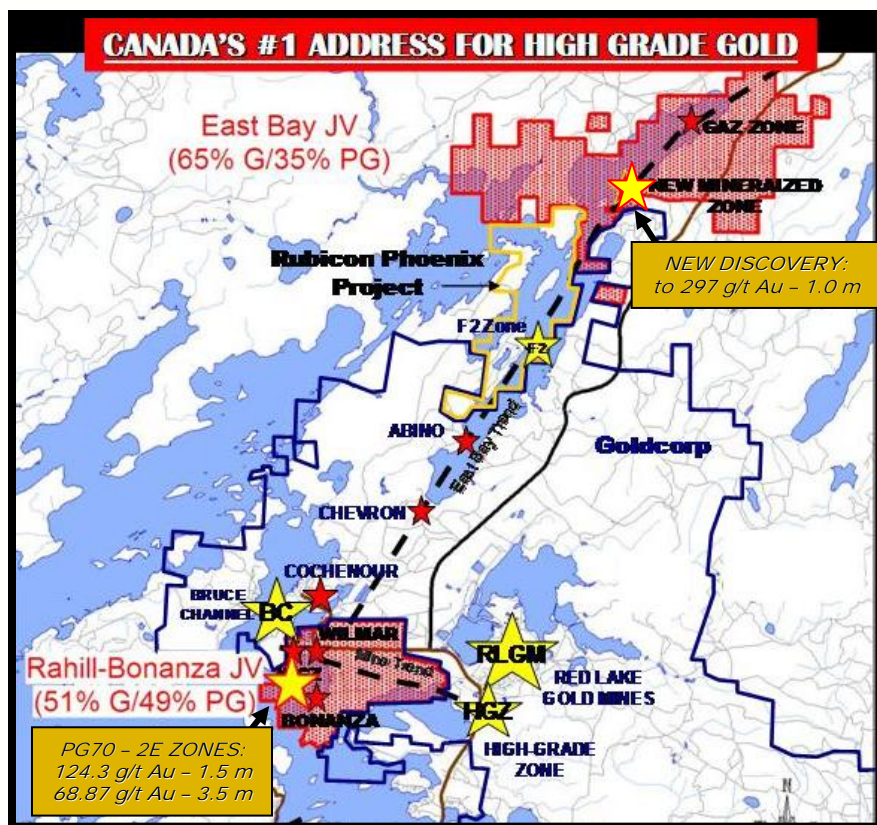
**View from Rahill-Bonanza
Joint Venture boundary**



THE PREMIER DIFFERENCE

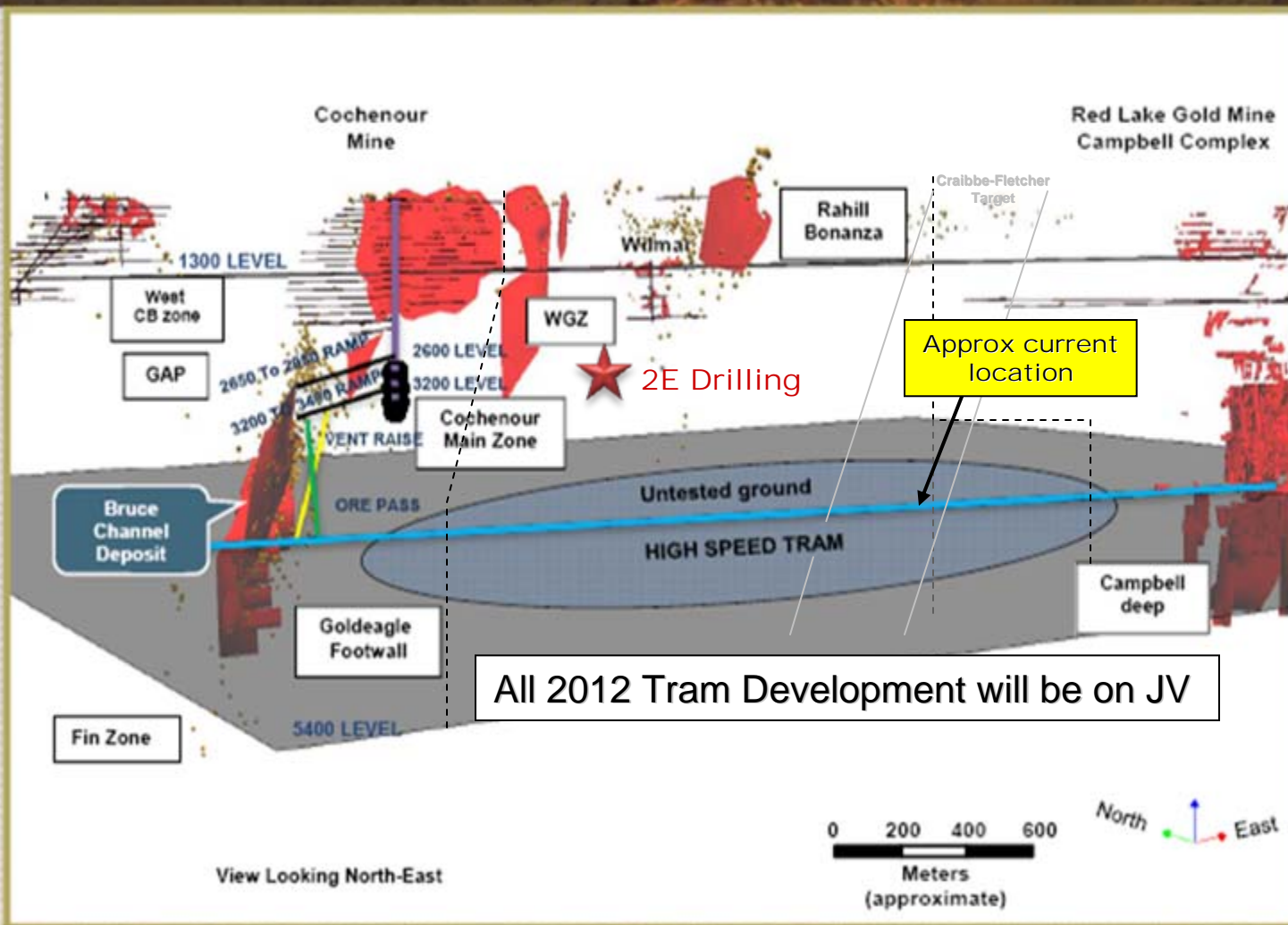
RED LAKE – 2 Core Projects

- The Rahill-Bonanza JV represents the last project on the main Red Lake "Mine Trend" not 100% owned by Goldcorp.

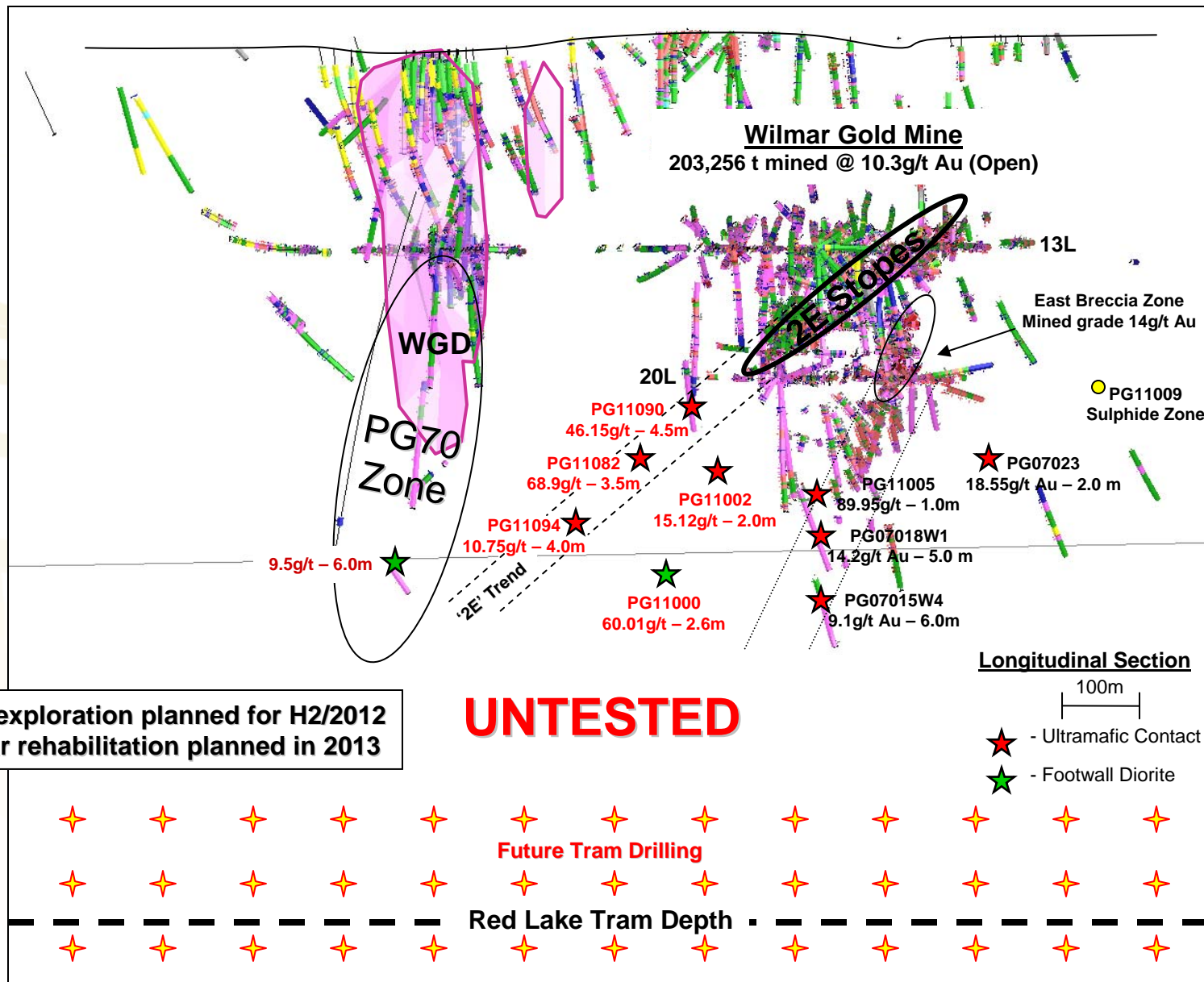


COCHENOUR PROJECT ADVANCING

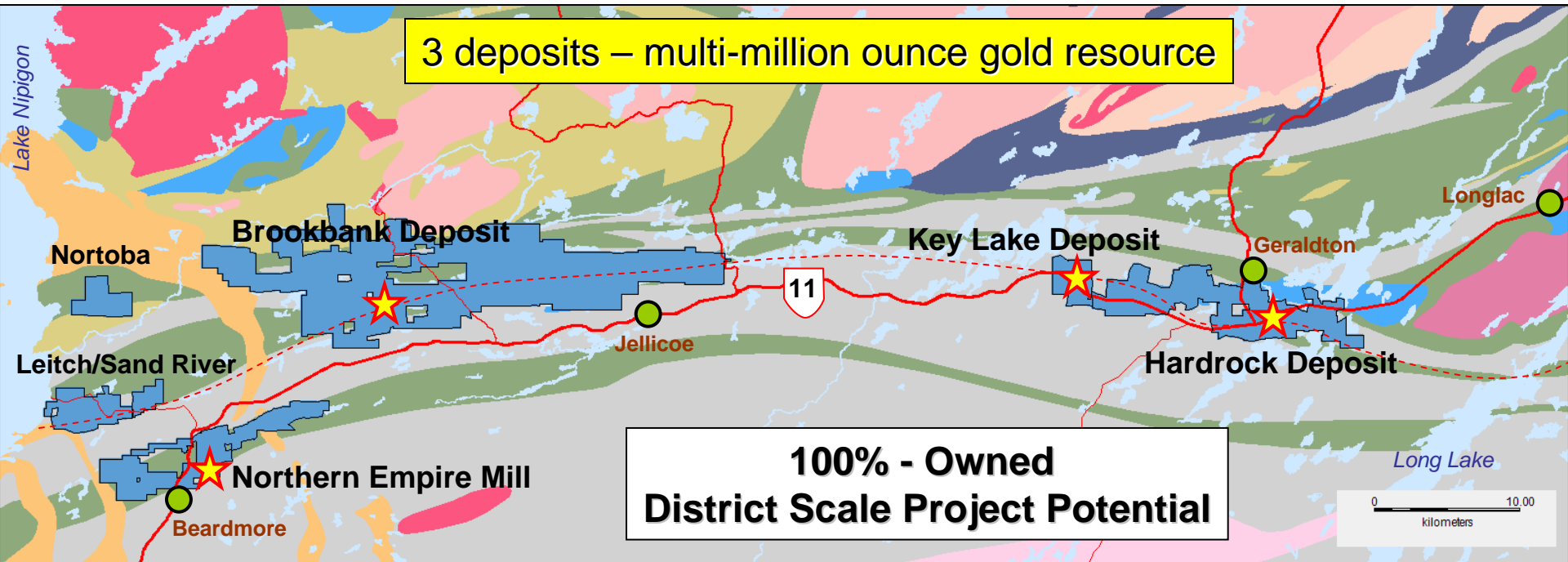
From Goldcorp website
Global Metals Mining Conference, March 2, 2010



All 2012 Tram Development will be on JV



Project has evolved from exploration (2008-11) towards targeted development (2012-14)



- Key Highlights:
- 1) **NI43-101 Resource update – H1 2012**
 - 2) *Permitting for Advanced Exploration underway*
 - 3) *PEA with JDS has started for H2 2012 release*



Hardrock 3D Mine Model in Long Section View looking North

Deposits remain open down-plunge

Surface

500 m

**Western-most hole
MM170
18.49g/t – 20.5m**

F ZONE DELINEATION
7.92 g/t Au – 114.5 m
Incl. 23.56 g/t Au – 31.0 m

4.22 g/t Au – 62.8 m
Incl. 6.22 g/t Au – 27.2 m

2000 ft Level

F-Zone

K-Zone

Open Pit Zones

NN ZONE

EP-ZONE

TENACITY ZONE

SP Zone

Fortune Zone

HGN ZONE

Tenacity

HGN Zone
1,141.5 g/t Au – 2.0 m
49.81 g/t Au – 6.0 m
Discovered in 2009

Fortune Zone
251.0 g/t Au – 1.0 m
121.0 g/t Au – 1.5 m
11.34 g/t Au – 19.5 m
Discovered in 2009

High-Grade Zones

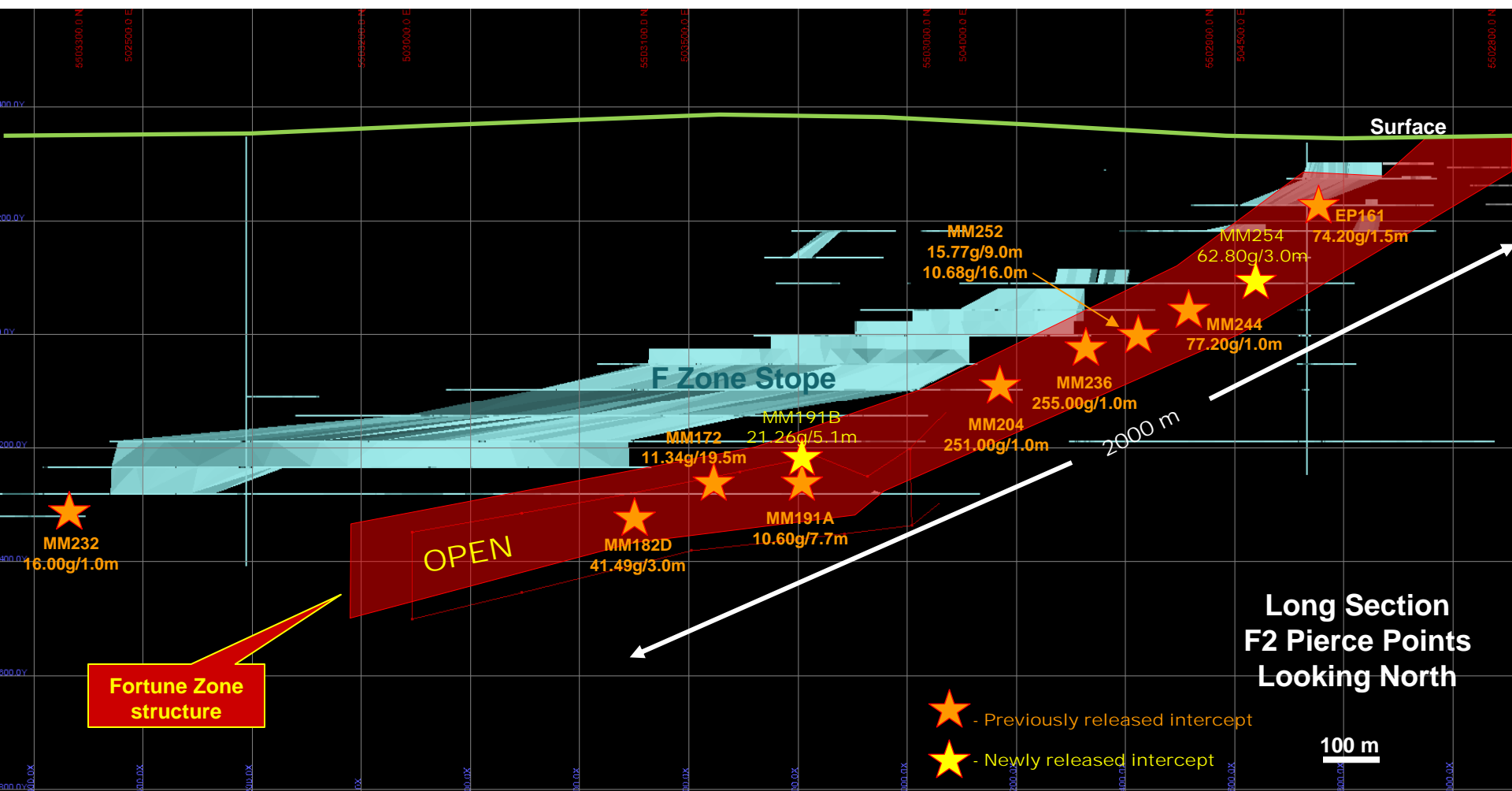
2011 NI43-101 Compliant Mineral Resources

OPEN

	<u>Grade Est(Au g/t)</u>			
<u>Classification</u>	<u>Underground</u>	<u>Open Pit</u>	<u>Tonnes*</u>	<u>Contained Au Ozs*</u>
Measured	5.99	2.45	9,177,000	985,800
Indicated	5.83	2.28	11,590,000	1,506,000
Inferred	5.40	2.48	6,802,000	1,122,700

*Open Pit + Underground





Target area for defining high-grade gold resources (2012)

Hardrock Deposit

INFRASTRUCTURE

- Full-service communities of Geraldton and Beardmore.
- Access to natural gas, power, & the Trans-Canada Hwy.
- Multiple deposits offer multiple development options.



COVE GOLD PROJECT
- BATTLE MOUNTAIN/EUREKA TREND -
High-Grade gold project – wide open for expansion

SOUTH CARLIN PROJECTS (Saddle-Rain)
- IN THE HEART OF THE CARLIN TREND -
**+110 M OUNCES OF PRODUCTION, RESERVES,
RESOURCES & MINERAL INVENTORY**

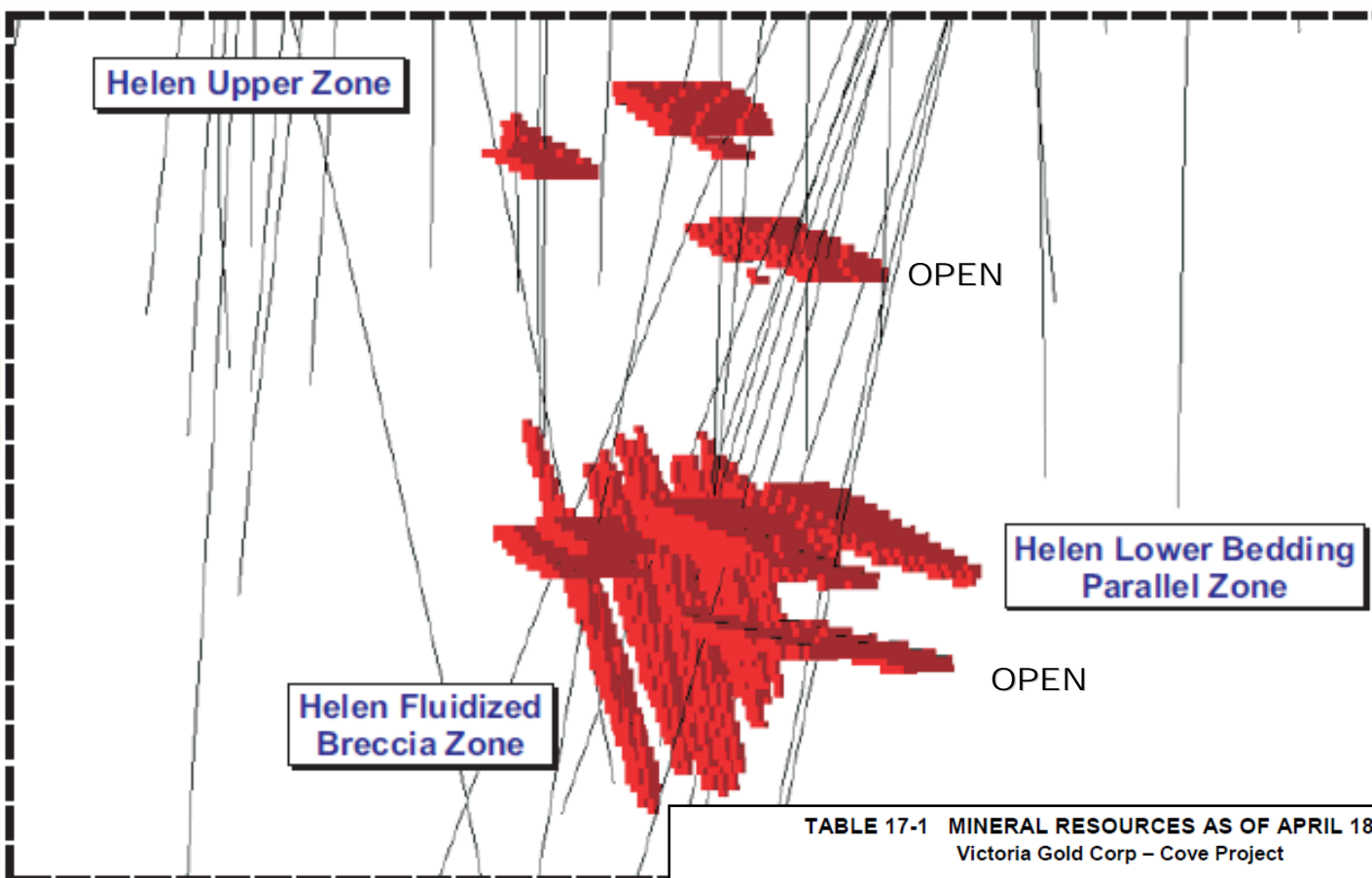


Additional opportunities being assessed

U.S. IS THE FOCUS FOR
FUTURE CORPORATE
GROWTH -



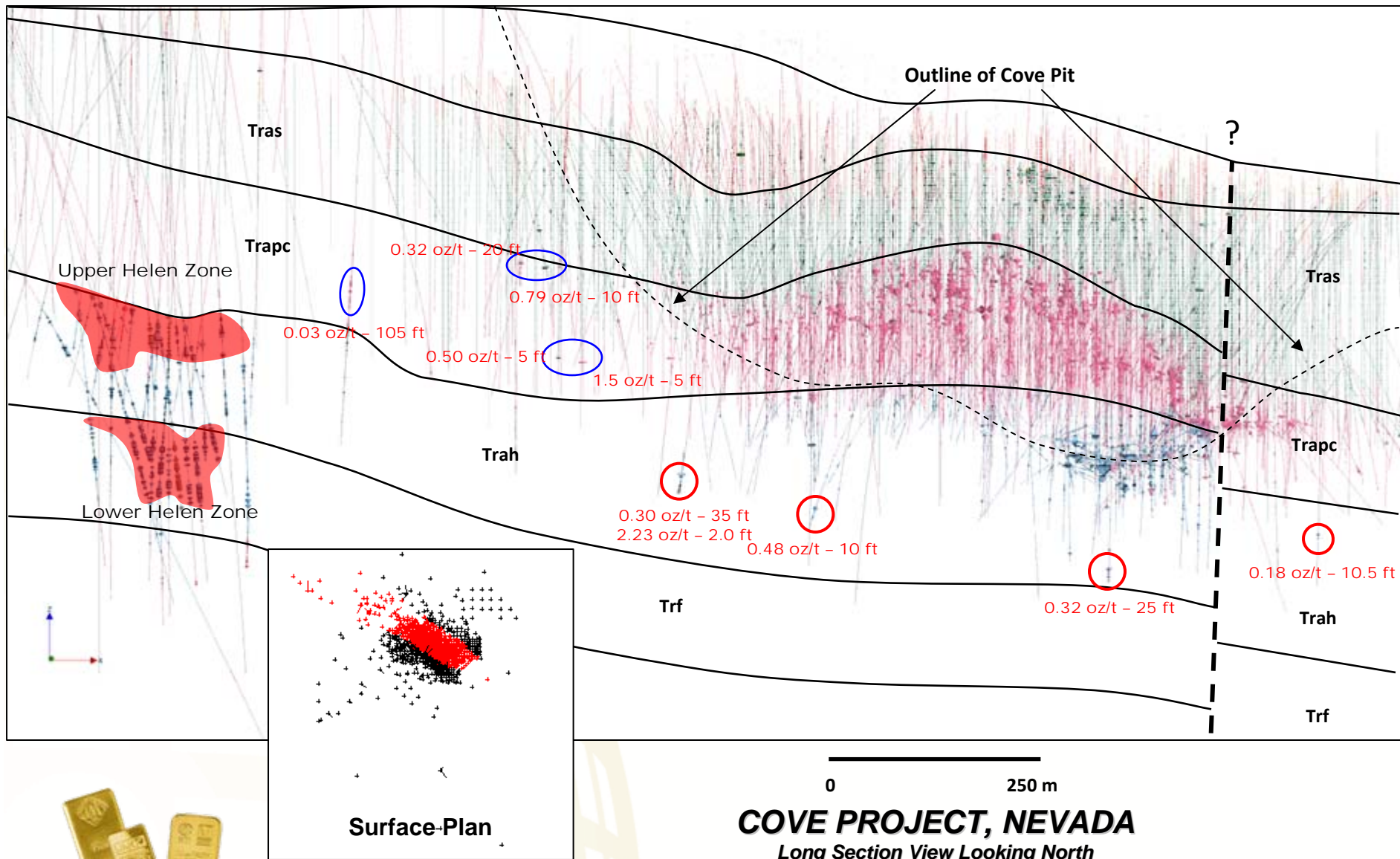




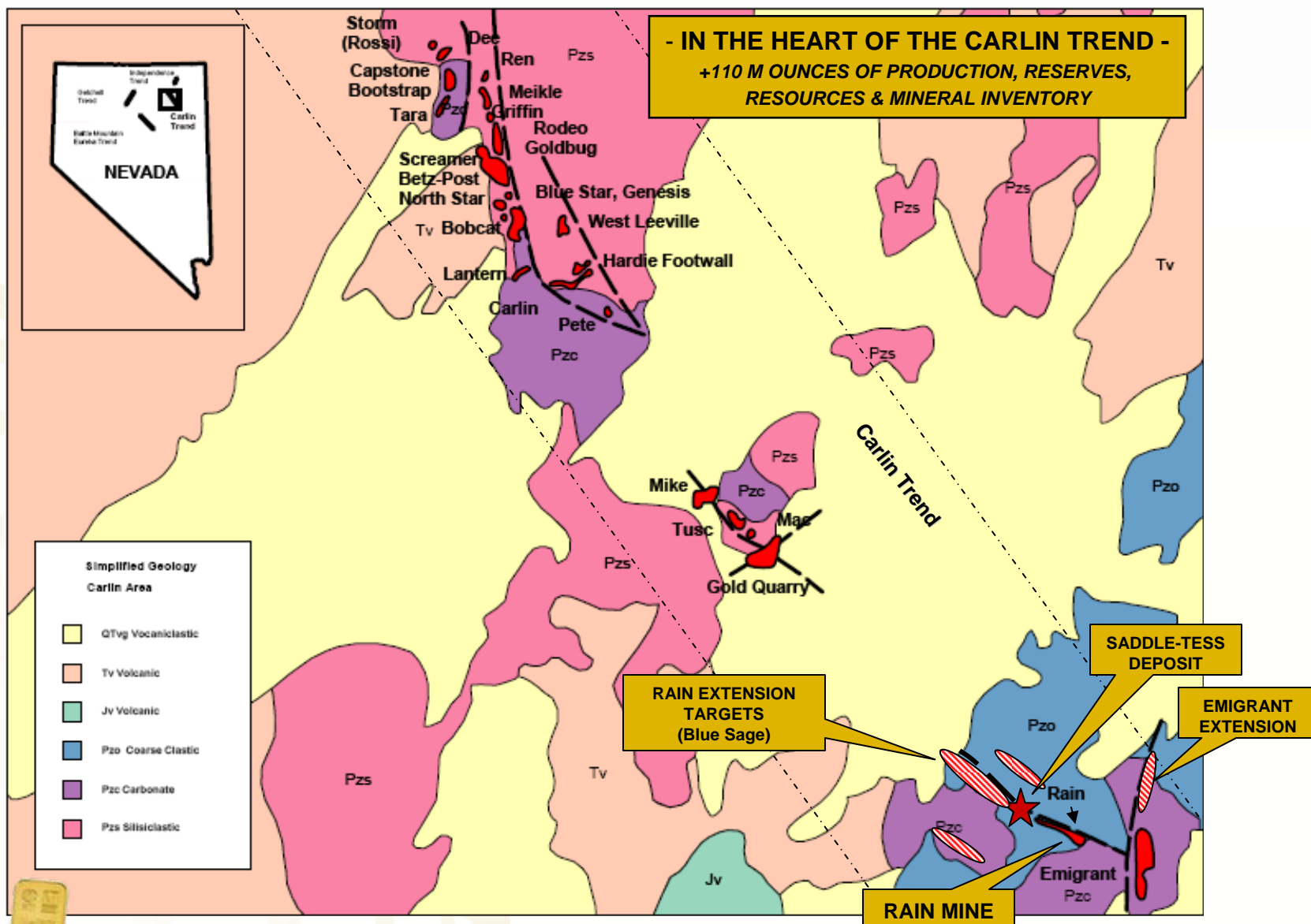
One of Nevada's highest grade gold deposits

Location	Tons	Tonnes	Grade Au (oz/st)	Grade Au (g/t)	Contained Au (oz)
Helen - Upper	48,500	44,000	0.66	22.63	32,000
Helen Lower Bedding Parallel	166,600	151,100	0.55	18.86	91,600
Helen Lower Fluidized Breccia	176,500	160,100	0.61	20.91	107,700
Total Helen - Lower	343,100	311,200	0.58	19.92	199,300
Total Inferred Mineral Resource	391,600	355,200	0.59	20.25	231,300

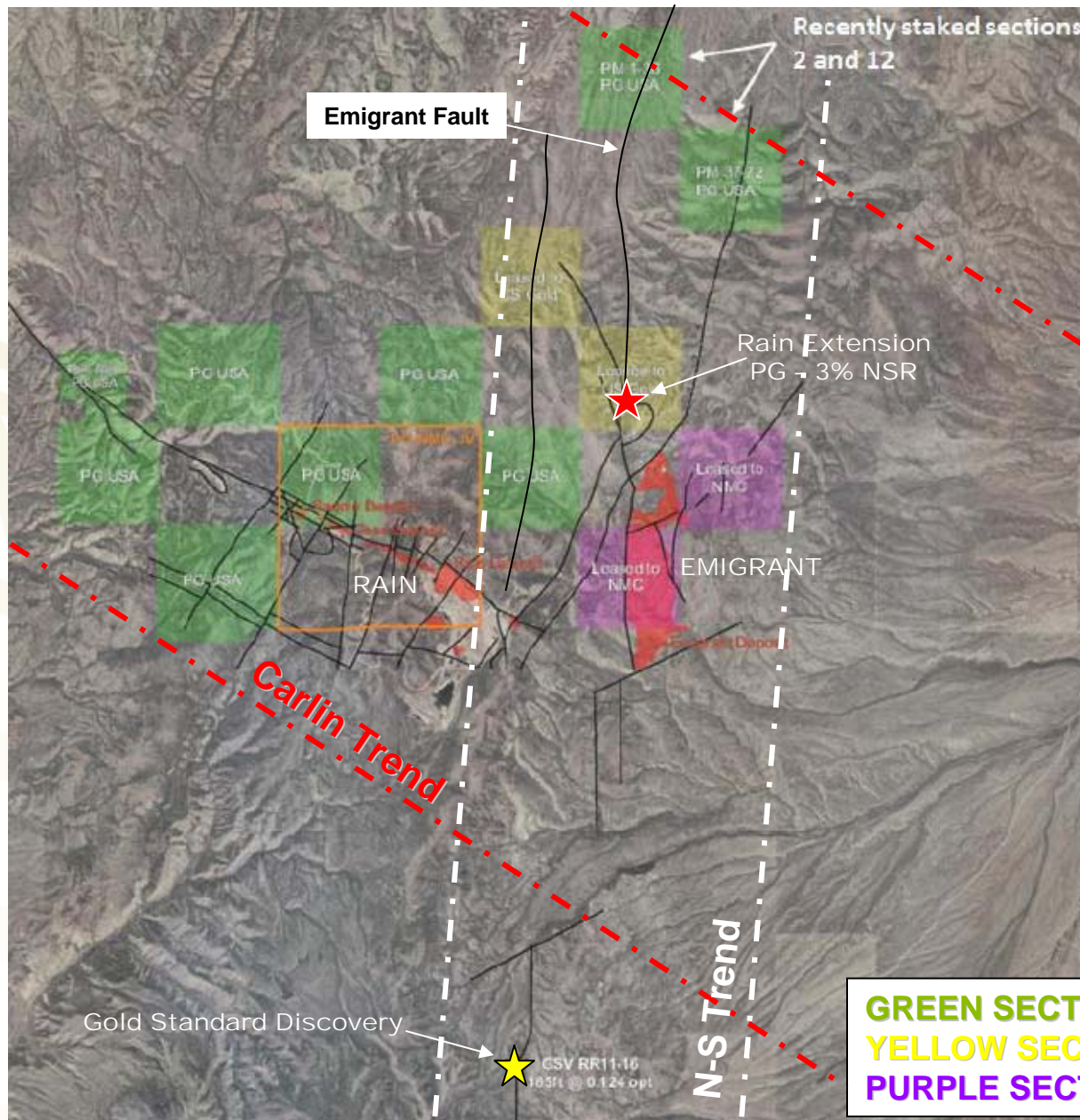




CARLIN TREND, NEVADA



SOUTH CARLIN PROJECT



GREEN SECTIONS – 100% PG
YELLOW SECTIONS – 3.0% NSR
PURPLE SECTIONS – 1.5% NSR



- Premier Gold - Canada Division:**Trans-Canada Project**

- *Updated resource estimate expected in near future*
- *Preliminary Economic Assessment expected in H2 2012*
- *Major drill campaign underway (steady results driven news flow)*

Red Lake JV Projects

- *Red Lake Mine tram development on JV for the balance of 2012*
- *Initial exploration drilling from tram to commence in mid-late 2012*
- *Active exploration programs at both JV project sites (steady news flow)*

- Premier Gold - US Division:

- *Mine design assessment for the Rain Gold JV Project being completed*
- *Prepare pathway to mine development in first half of 2012*
- *Growth through acquisition – Cove project is consistent with Company strategy to acquire advanced-stage, high-grade, gold deposits*

- Premier Royalty Corporation:

- *Pursuing royalty opportunities with intent of 2012 spin-out*
- *Led by Abraham Drost (formerly President of Sandspring and Sabina)*



Premier Gold Mines Limited

KEY CONTACTS:

Ewan Downie (807) 346-1390
President & CEO

Paul Huet (807) 346-1390
Chief Operating Officer

Stephen McGibbon (613) 376-6782
*Executive Vice President
Corporate & Project Development*

Matthew Gollat (807) 766-3381
Investor Relations

A World of Opportunity

- Premier Performance – Premier Growth – Premier Opportunity -

Symbol: PG

Exchange: TSX