

PREMIER

Gold Mines Limited

PREMIER GROWTH – PREMIER OPPORTUNITY

September 2011

- PROVEN MANAGEMENT

- PROVEN GOLD DISTRICTS

- SAFE MINING JURISDICTIONS

Symbol: PG
Exchange: TSX

1-888-346-1390
www.premiergoldmines.com



DISCLAIMER:

This presentation may contain "forward looking statements" within the meaning of Canadian securities legislation, which are based on the opinions and estimates of management and are subject to a variety of risks and uncertainties and other factors that could cause actual events or results to differ materially from those projected in the forward looking statements. Such risks and uncertainties include, but are not limited to, risks associated with the mining industry, the risk of commodity price and foreign exchange rate fluctuations, the ability of Premier to fund the capital and operating expenses necessary to achieve the business objectives of Premier, as well as those risks described in public disclosure documents filed by Premier. Due to the risks, uncertainties and assumptions inherent in forward-looking statements, prospective investors in securities of Premier should not place undue reliance on these forward-looking statements.

Historical Resources have been estimated by previous operators and are not NI 43-101 compliant.





Ewan Downie – President, CEO, Director

Formerly CEO of Wolfden Resources which was acquired in 2007 by Zinifex for \$361 Million (+1500% from IPO). In 2004, part of the Wolfden exploration team Wolfden that received the Prospector & Developers Association of Canada (PDAC) '2003 Bill Dennis Prospector of the Year Award'. Also a Director of several other publicly traded companies.

Richard Hall – Chairman, Director

Holds a Bachelor and a Masters Degree in Geology and an MBA. 35 years of mining exploration and development experience. Formerly President and Chief Executive Officer of Metallica Resources Inc., that In August 2008, became part of a \$1.6 billion merger with Peak Gold Ltd. and New Gold Inc. Previous to his tenure at Metallica, Mr. Hall held senior management positions with Dayton Mining Corporation and Pegasus Gold Corporation.

Paul Huet – Chief Operating Officer

Over 24 years of progressive mining experience in a decorated career which has spanned employment in both the Canada and the United States. Formerly General Manager for Nevada Operations, at Great Basin Gold Limited and led a team that permitted, built and operated the high grade Hollister Gold Mine and Esmeralda Mill into a +100,000 ounce per year producing asset. Prior to that he worked at the Midas Mining Operations of Newmont Mining Corporation in Nevada in various senior capacities and worked in supervisory and mining positions with Dynatec Mining Corp. and Kinross Gold Corp. in Timmins and Red Lake.

Stephen McGibbon – Exec VP Corporate & Project Development

Professional Geologist with over 23 years of exploration, mine production and management experience. Mr. McGibbon held positions of increasing responsibility in Red Lake with Goldcorp Inc. and its predecessor companies Goldquest Exploration Inc. and Dickenson Mines Limited, becoming Chief Geologist in 1995. From 2001 until June of 2006, he served as Exploration Manager at its flagship Red Lake Mine operation and was a senior member of the team at Goldcorp that discovered the "High Grade Zone" at Red Lake.

Tim Twomey – VP Exploration

A professional geologist with over 25 years of exploration, production and management experience. As former Senior Exploration Geologist with Goldcorp's Regional Exploration Team in the Red Lake Area, Tim brings to Premier a "golden" track record that includes playing a key role in Goldcorp's "High-Grade Zone" discovery.

- Management with a track record of creating shareholder value -



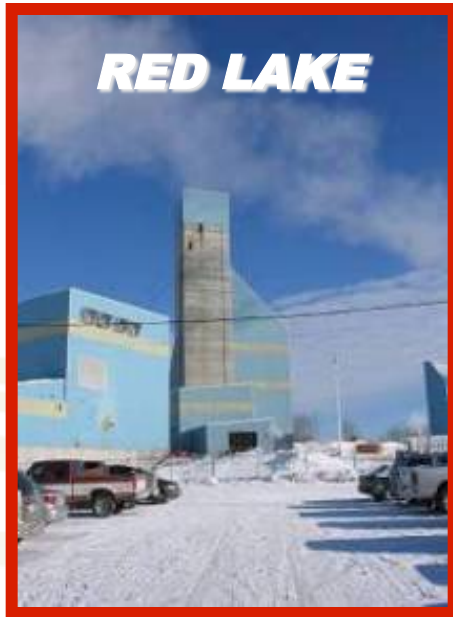


PREMIER

Gold Mines Limited

THE PREMIER DIFFERENCE

A World Of Opportunity



RED LAKE



PQ NORTH



TRANS-CANADA



SADDLE - NEVADA

✓ **PROVEN GOLD CAMPS**
(Nevada – Ontario)
LOW POLITICAL RISK

✓ **OUTSTANDING**
INFRASTRUCTURE

Multiple Projects in the heart of several of North America's premier gold camps

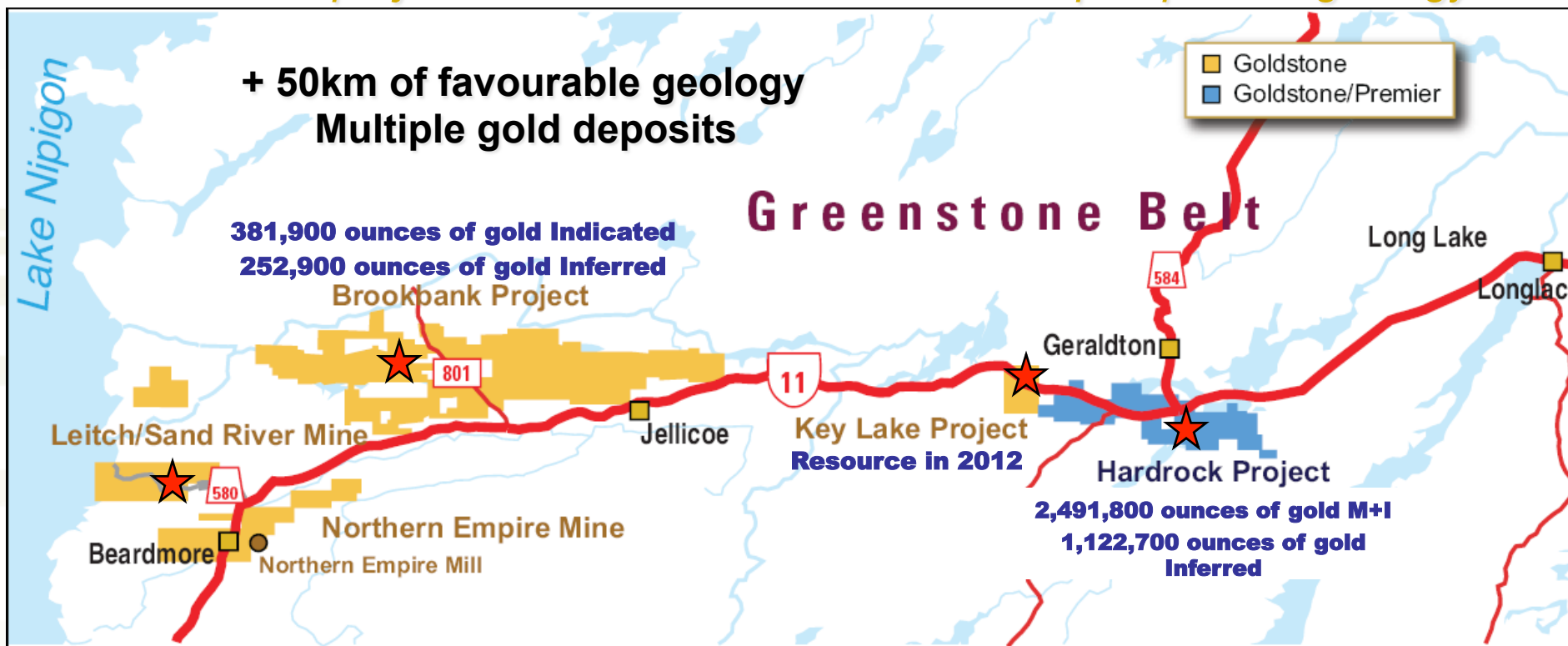


www.premiergoldmines.com

PG:TSX



Numerous projects that cover the district's most prospective geology

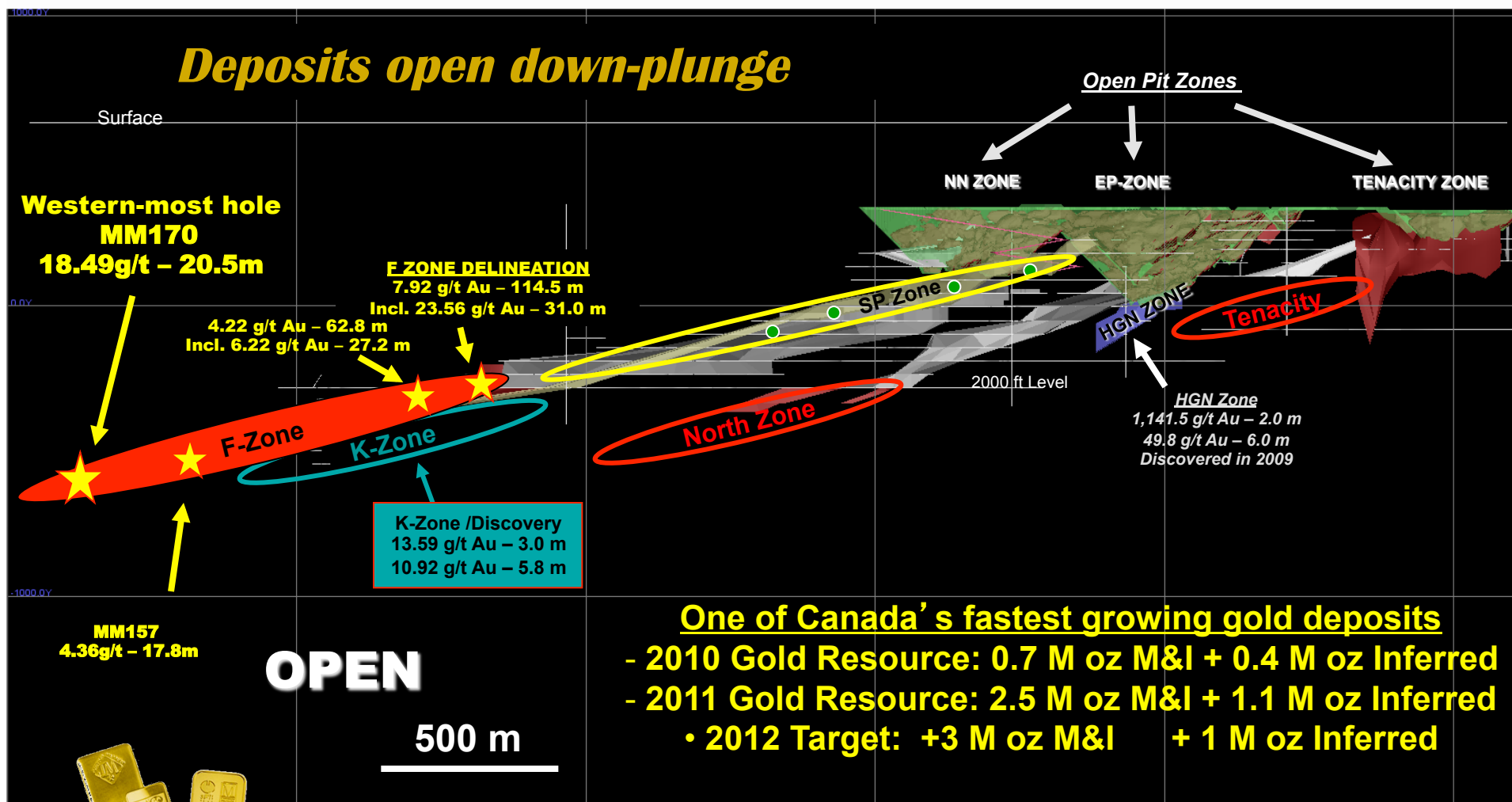


Key Highlights:

- 1) Major district land holdings (+50km strike)
- 2) Growing gold resource - multi-million ounces
- 3) 100% control of multiple deposits & a fully permitted mill complex!



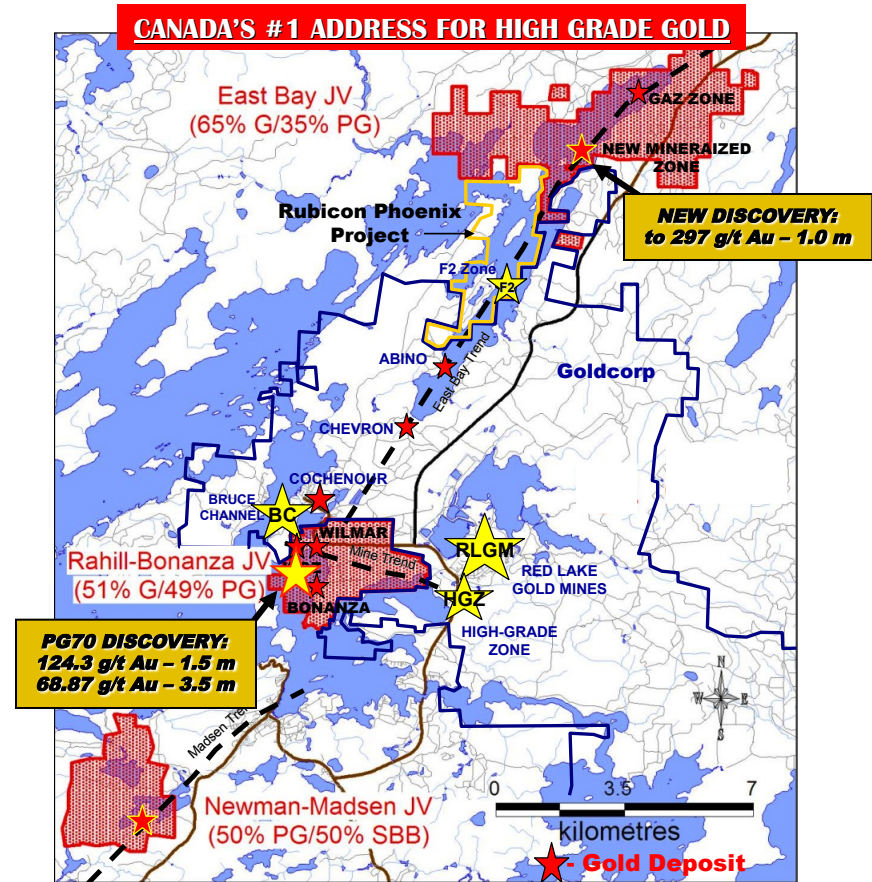
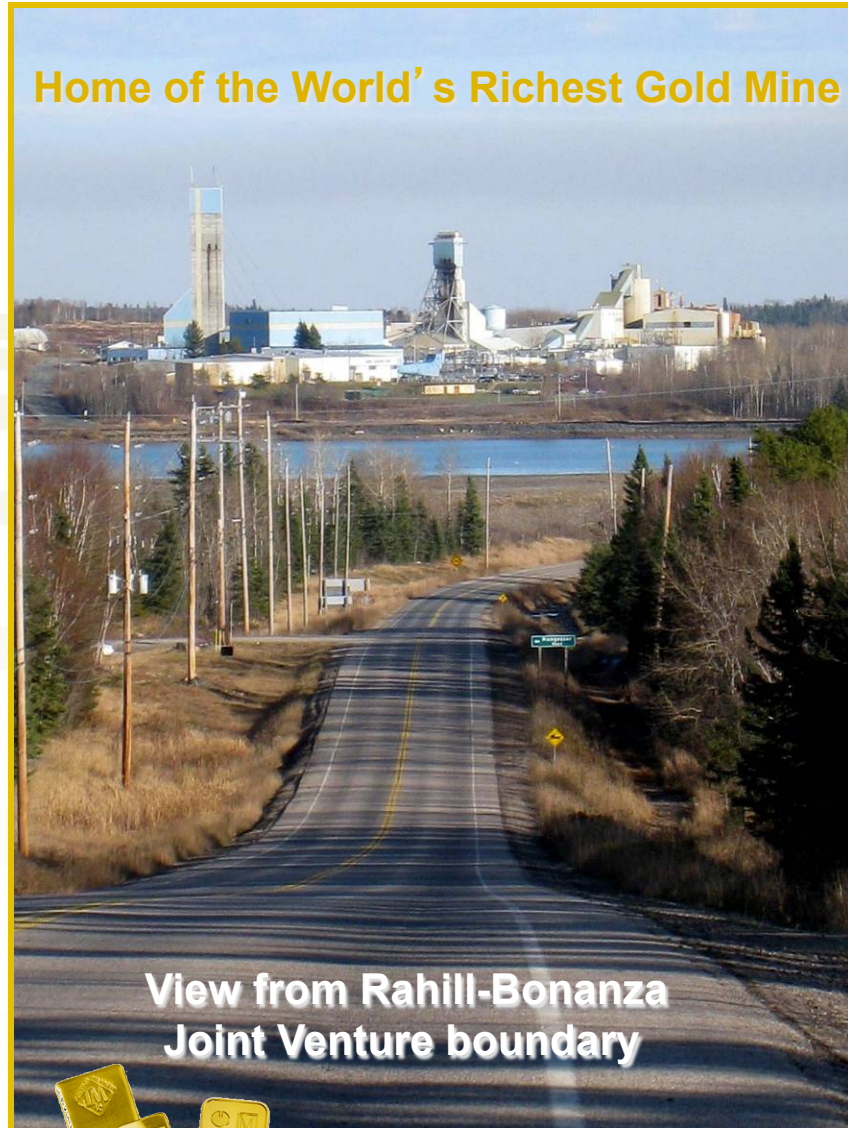
Hardrock 3D Mine Model in Long Section View looking North

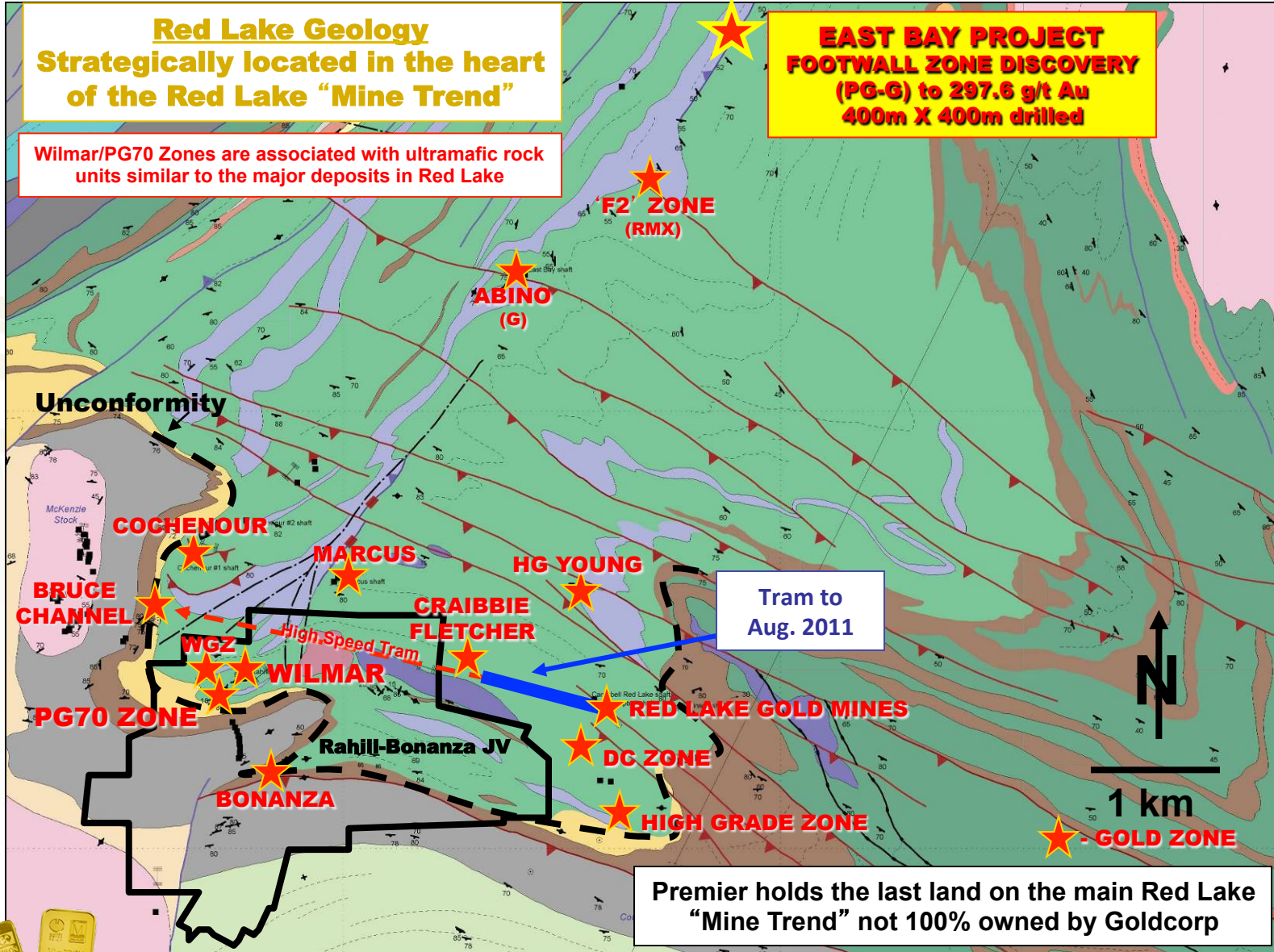


THE PREMIER DIFFERENCE

RED LAKE – 2 Core Projects

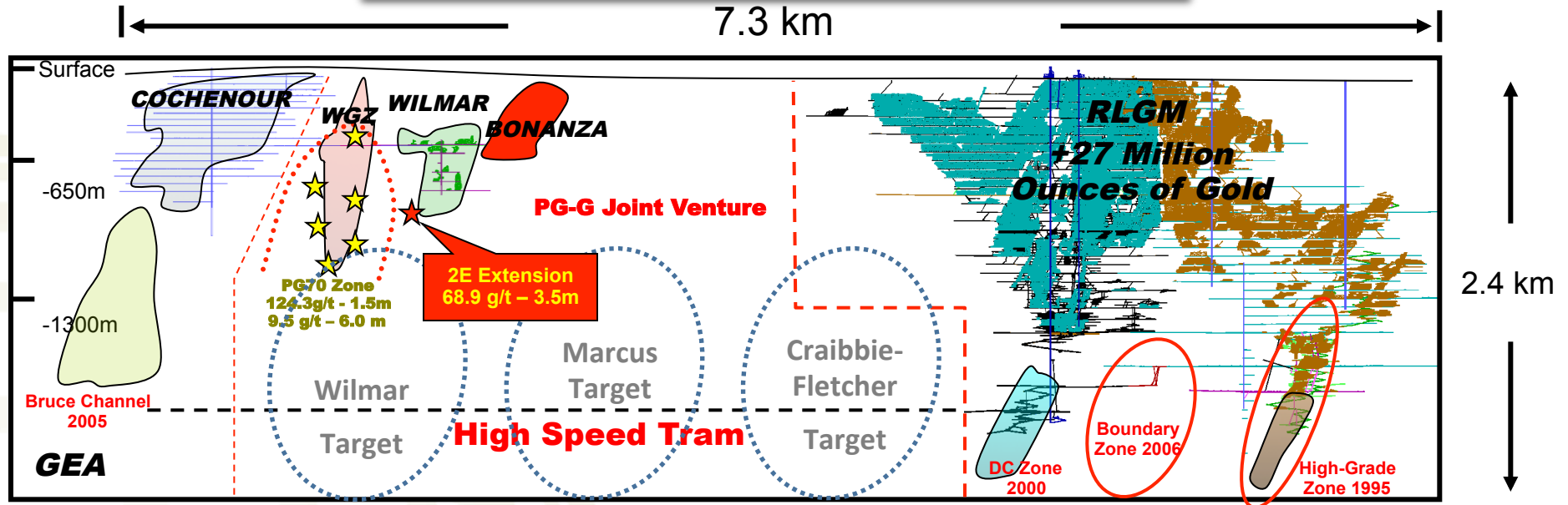
- ***The Rahill-Bonanza JV represents the last project on the main Red Lake "Mine Trend" not 100% owned by Goldcorp.***
- ***Recent Developments:***
 - ***Tram construction is underway***
 - ***Cochenour/Bruce Channel mine development***







Mine Trend Potential



★ Current drilling program – 2E - Zone discovery

Several recent discoveries have been made down plunge of existing deposits

Longitudinal Section Looking North

- Majority of holes that have tested the PG70-2E area have intersected visible gold
- HIGH SPEED TRAM WILL OPEN UP HUGE POTENTIAL AT DEPTH



SADDLE GOLD PROJECT

Saddle Deposit (Approx. location)

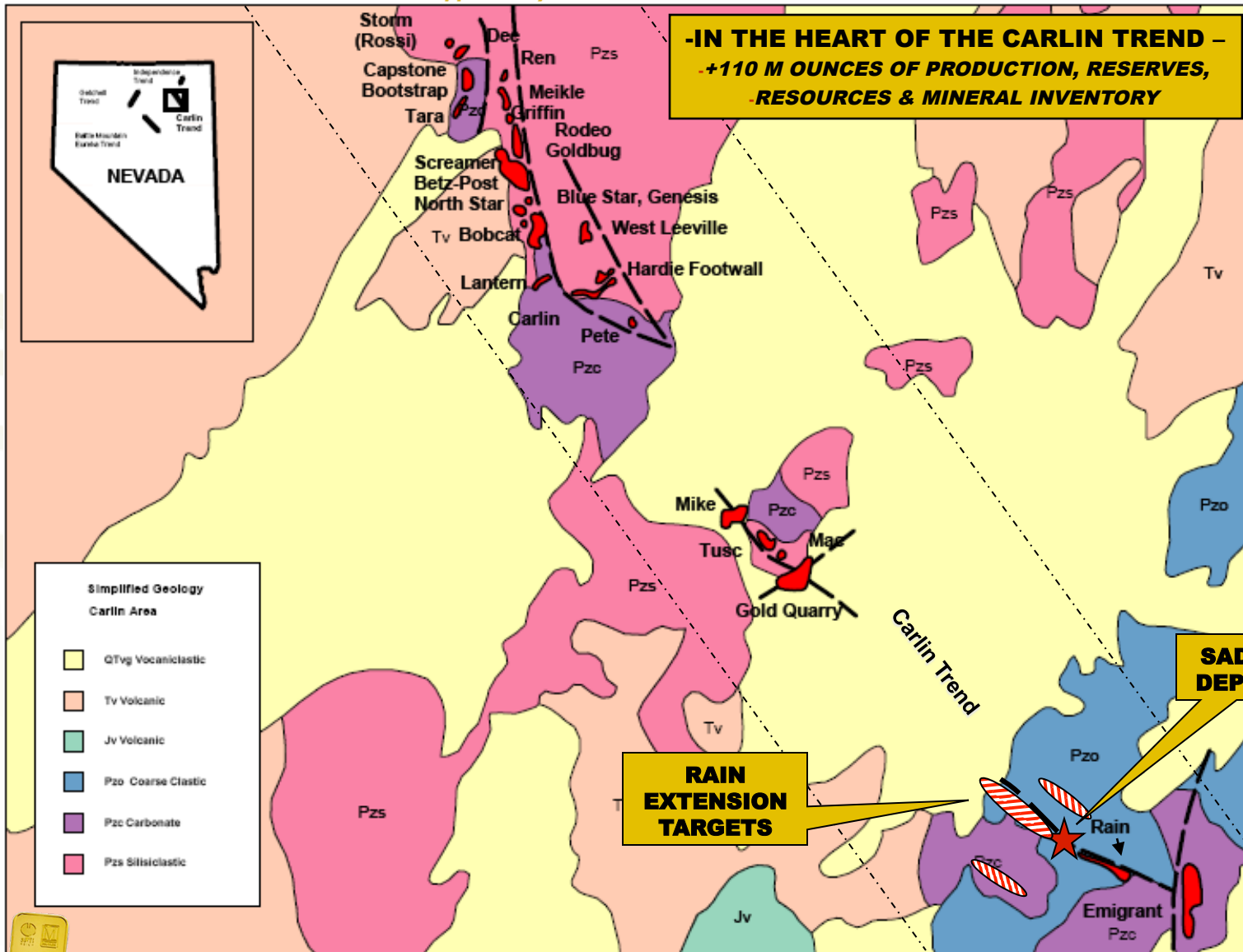


Rain Gold Mine (Newmont)

- High-grade gold deposit
- In the heart of the Carlin Trend
- Proximal to mine infrastructure

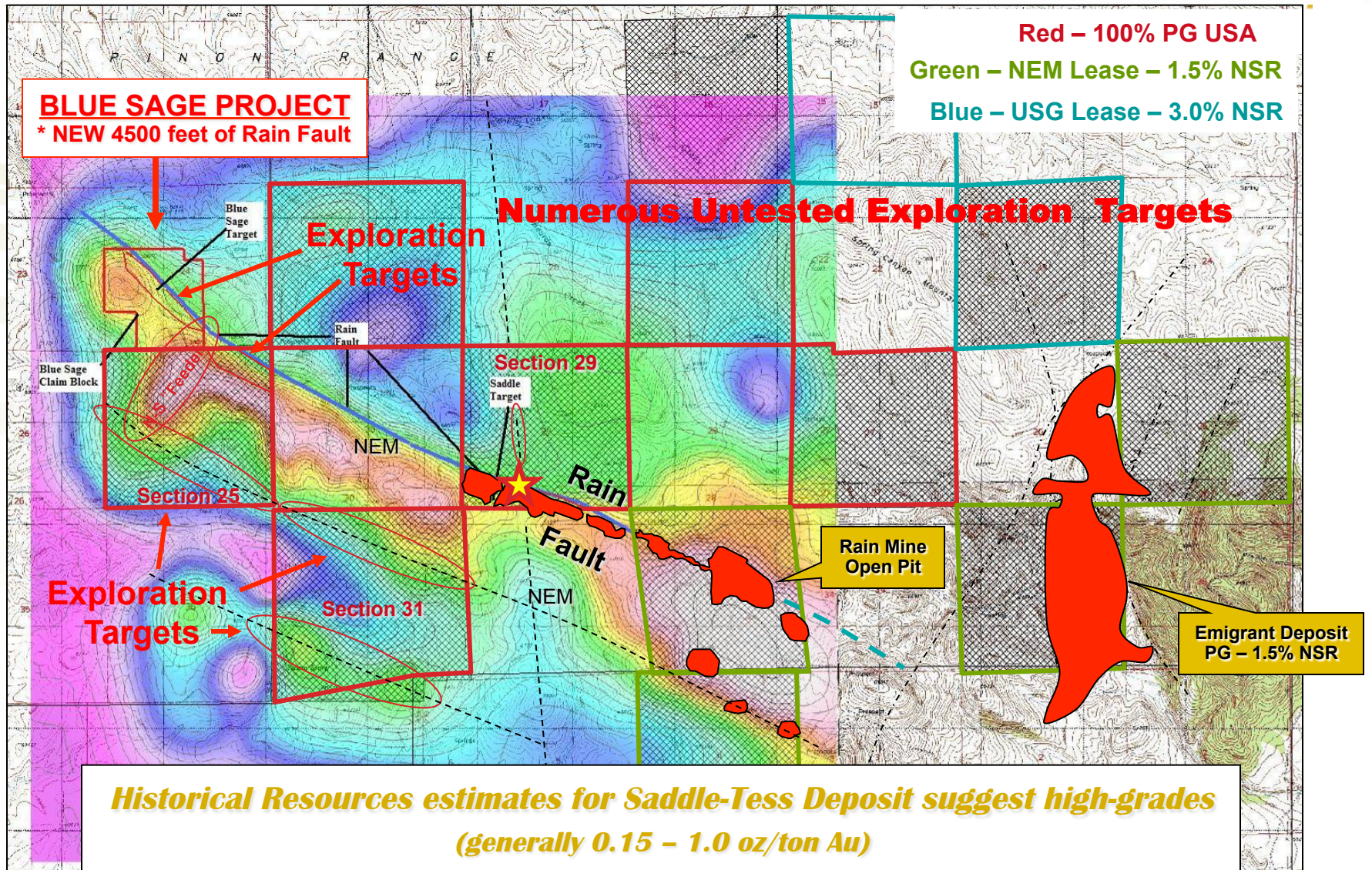


SADDLE PROJECT





Regional Structures interpreted from Gravity map

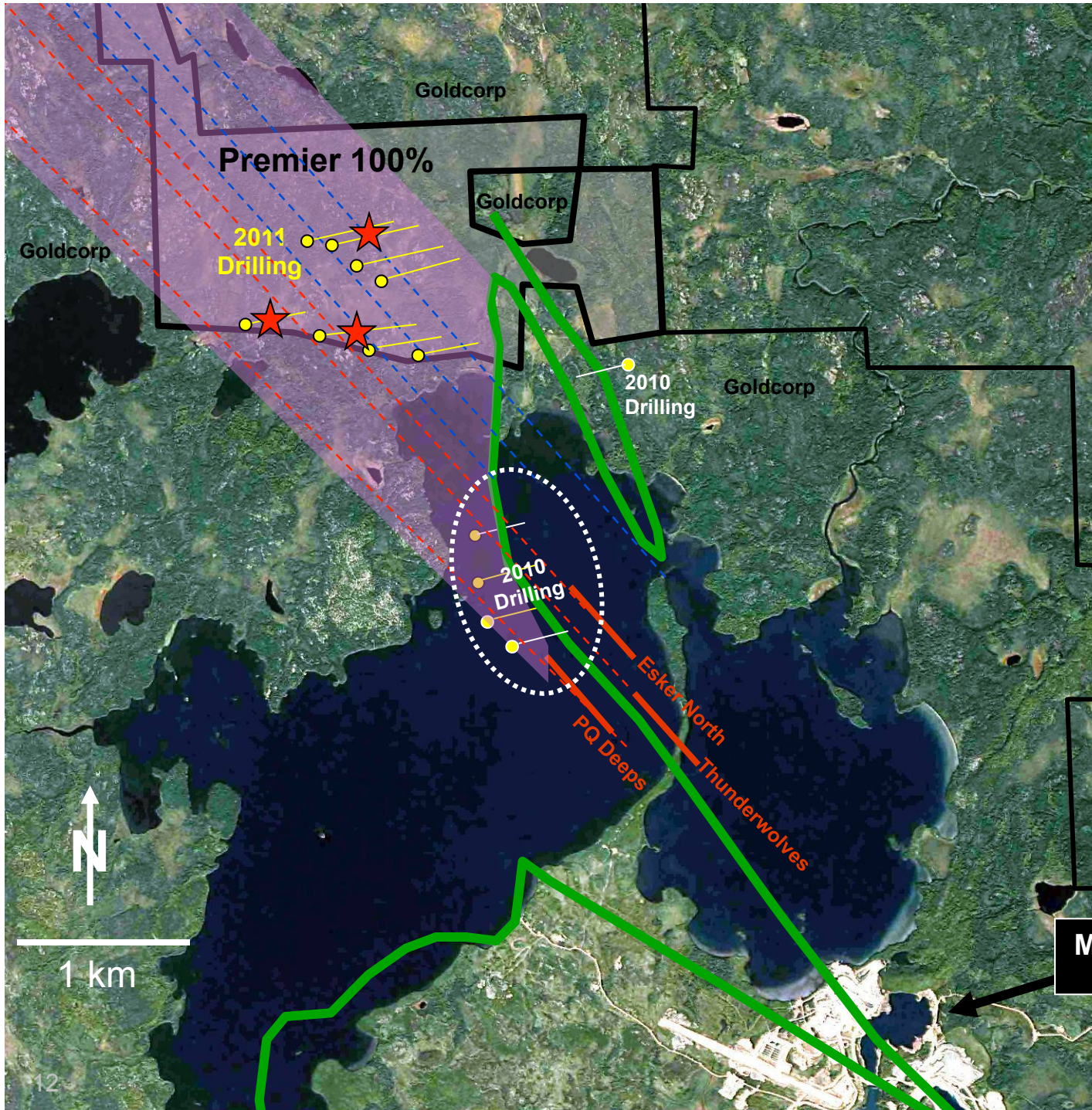


PQ-NORTH PROJECT

- *Exploration target:*
- *At the Musselwhite Mine, multiple deposits have been identified along the PQ limb of the main host IF.*
- *Recent drilling at PQ North has intersected gold-bearing shear zones and gold in iron formation similar to the main mine zones at*

MUSSELWHITE GOLD MINE
Goldcorp Inc.

 - *New Mineralized Zone*





Market Caps of Companies holding Significant North American Gold Resources

Recent North American Acquisitions:

- **Fronteer – Long Canyon (Nevada)** **\$ 2,300,000,000**
- **Gold Eagle – Bruce Channel (Ont)** **\$ 1,500,000,000**

Current Market Cap:

- **Premier Gold – Hardrock (Ont)** **\$ 826,000,000**

* - As of Sept. 2, 2011

- based on currently outstanding shares

Premier also holds several additional gold deposits:

- **Saddle Gold Deposit (Nevada)**
- **Red Lake Projects (Ontario)**



Premier Gold Mines Limited

KEY CONTACTS:

Ewan Downie (President & CEO): (807)-346-1390

Stephen McGibbon (Exec. VP & COO): (613) 376-6782

Matthew Gollat (Investor Relations): (807) 766-3381

A World of Opportunity

- Premier Performance – Premier Growth – Premier Opportunity -

Symbol: PG

Exchange: TSX