

Mirasol Resources Ltd.

Precious Metals Summit – Beaver Creek
September 14-16, 2011



MIRASOL RESOURCES LTD

Discovery Through Exploration Leadership



Julia Vein
Virginia Project
May 2011

TSXV: MRZ

DISCLAIMER

This presentation contains historical and forward-looking statements. The forward-looking statements involve risks and uncertainties particularly with respect to project risks. Forward looking statements appearing in this presentation represent management's current estimates and these may change significantly as new information comes to hand.

This document and the information contained herein do not constitute a prospectus and do not form an offer for, or invitation to apply for, securities in any jurisdiction. Potential investors should not rely solely on the information contained herein prior to making an investment decision. Investors should seek independent advice from a qualified finance and investment advisor, giving due regard to their own personal circumstances, prior to forming an investment decision.

The information contained in this presentation has been obtained by Mirasol from its own exploration work, its joint venture partners, and from other sources believed to be reliable, however no representation or warranty is made as to its accuracy or completeness.

Many of the results presented are preliminary in nature and may not be accurate due to various factors. Including but not limited to sample recoveries, true widths and interpretations.



MIRASOL RESOURCES LTD.

TSX-V: MRZ

Discovery through Exploration Leadership

MANAGEMENT and DIRECTORS

Mary L. Little, *President, CEO and Director*– M.Sc., MBA, 25 years as geologist, analyst and country manager for major mining companies, 15 years in South America.

Stephen C. Nano, *V.P. Exploration*, B.Sc. (Hons.) –25 years in exploration and management roles in Latin America, Asia Pacific & Central Asia for major mining companies.

Timothy W. Heenan, *Exploration Manager and Director*, B.Sc., 25 years as exploration geologist and program manager throughout the Americas, with small and large mining companies.

Paul G. Lhotka, *Principal Geologist*, Ph.D., P. Geol. – 25 years in exploration as technical and country manager and Qualified Person with 15 years in Latin America

Douglas B. Silver, *Independent Director*, M. Sc., 25 years as mining industry analyst, entrepreneur, geologist, founder of International Royalty Corporation, portfolio manager.

Nick DeMare, *Independent Director, CA*, President of Chase Management Inc. and Board member of several TSX listed companies.

Bernie Zacharias, *Chief Financial Officer*, Co-founder of Avisar Chartered Accountants since 2004 and CFO of several TSX Venture listed companies.



MIRASOL RESOURCES LTD.

Share Structure

Shares Outstanding (Sept. 1, 2011)	38,337,501
Options	3,710,000
Warrants	1,838,500
Fully Diluted (Sept. 1, 2011)	43,886,001

Closely Held – Founders	3,845,903 (10%)
Recent Price/ Market cap	C\$4.50/ \$ 152 million
Recent price range	C\$ 4.10/ \$5.50
Cash position	C\$ 8.0 million

MRZ
one year price
range chart



Mirasol Resources - Argentina / Chile Focus

Prospect Generator – Successful Explorer



- Mirasol - Extensive precious metals (copper) portfolio – Chile and Argentina
- Mirasol - Advanced Silver-gold portfolio: +20 projects in Santa Cruz
 - Mirasol's flow of **new pre-drill discoveries** (La Curva, Claudia)
 - **Success track record** - Mirasol's Management team discovered Cerro Negro / Eureka / Mariana / Navidad / Joaquin / Virginia
- **Santa Cruz – attractive exploration / mining destination**
 - ***Prolific*** epithermal gold – silver province
12 discoveries in 20 years
 - **Mining friendly** – 4 operating modern Mines and 3 new developments in progress
 - 2 districts > 4 million Oz gold & 100 Million Oz silver
 - \$3.6 billion purchase of Andean Resources by Gold Corp

MIRASOL EXPLORATION IN PATAGONIA

TEAM: Premier exploration team in Santa Cruz Province, Argentina

FOCUS: Project generation – precious metals – since 2003

TEAM DISCOVERY RECORD: Seven discoveries moving towards development

Cerro Negro

Bajo Negro

Eureka

+ Virginia (Julia Vein)

Joaquin

Navidad

Veta Sulfuro (La Paloma)

MIRASOL PROPERTIES: Portfolio of more than 20 properties:

Drill Stage with high quality targets = 8

Project generation pipeline; Joint Ventures with producers

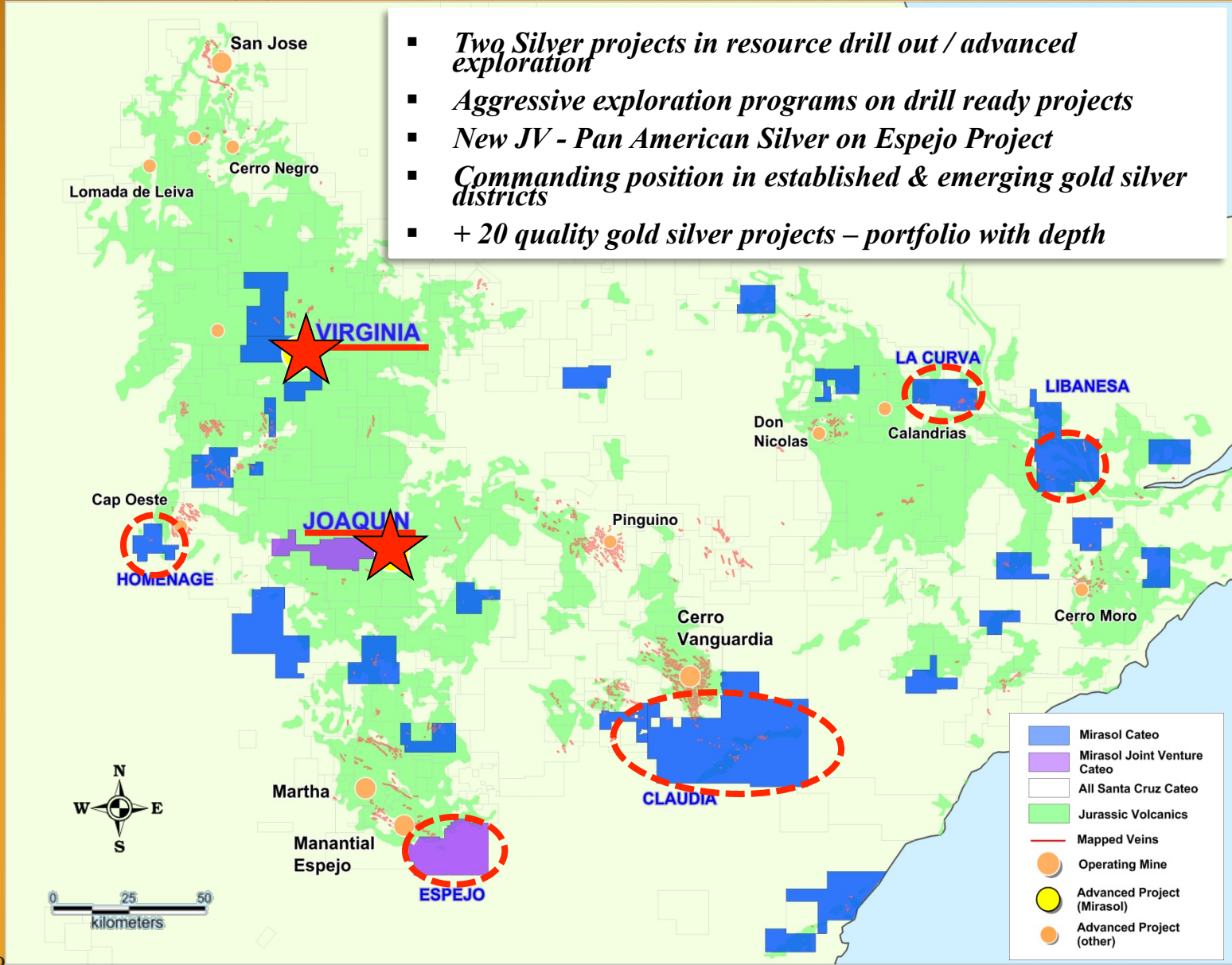
OPERATING ABILITY: Technical team based in Mendoza, Argentina;
In-house geologists, geophysical technician, logistical capacity,
proprietary remote sensing and targeting capabilities

MANAGEMENT: More than 80 years cumulative experience; successfully
operating in Argentina & Latin America

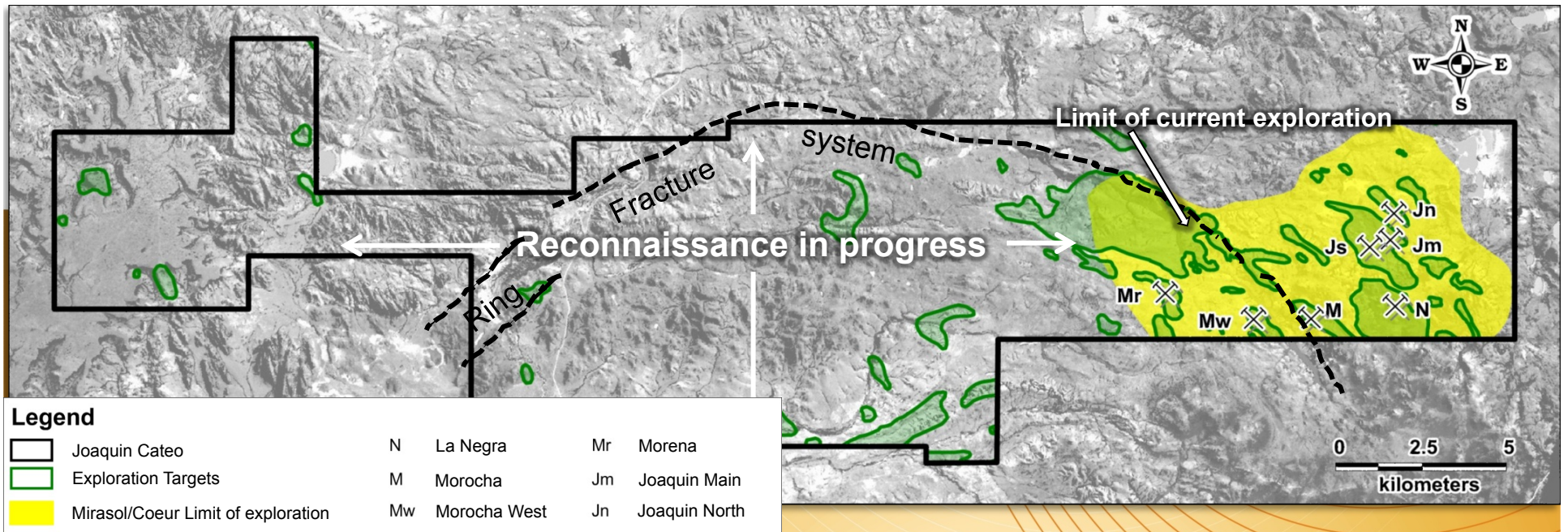
Mirasol Resources Santa Cruz Province, Argentina

Aggressive 2011 – 2012 exploration

- *Two Silver projects in resource drill out / advanced exploration*
- *Aggressive exploration programs on drill ready projects*
- *New JV - Pan American Silver on Espejo Project*
- *Commanding position in established & emerging gold silver districts*
- *+ 20 quality gold silver projects – portfolio with depth*



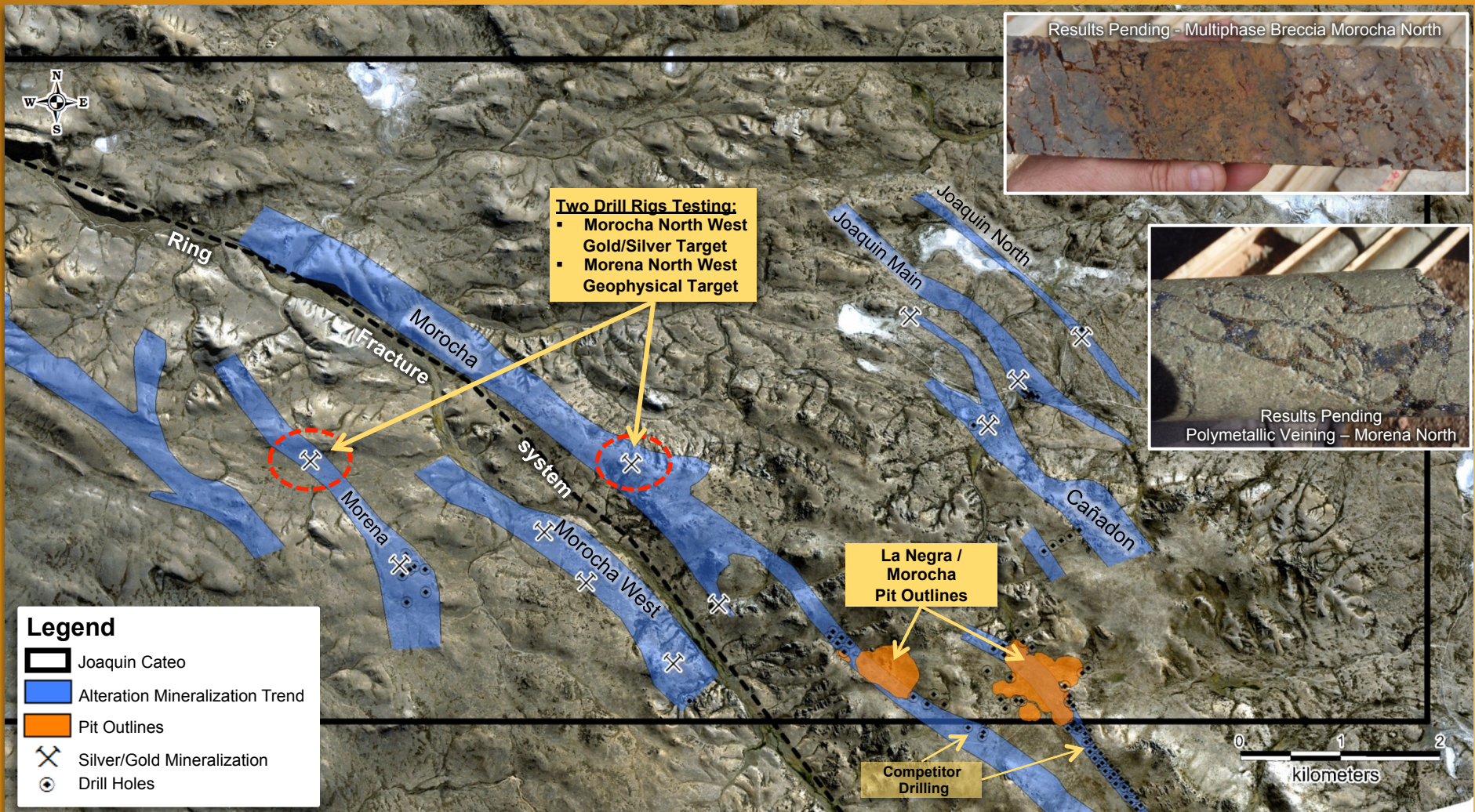
Joaquin Silver Project



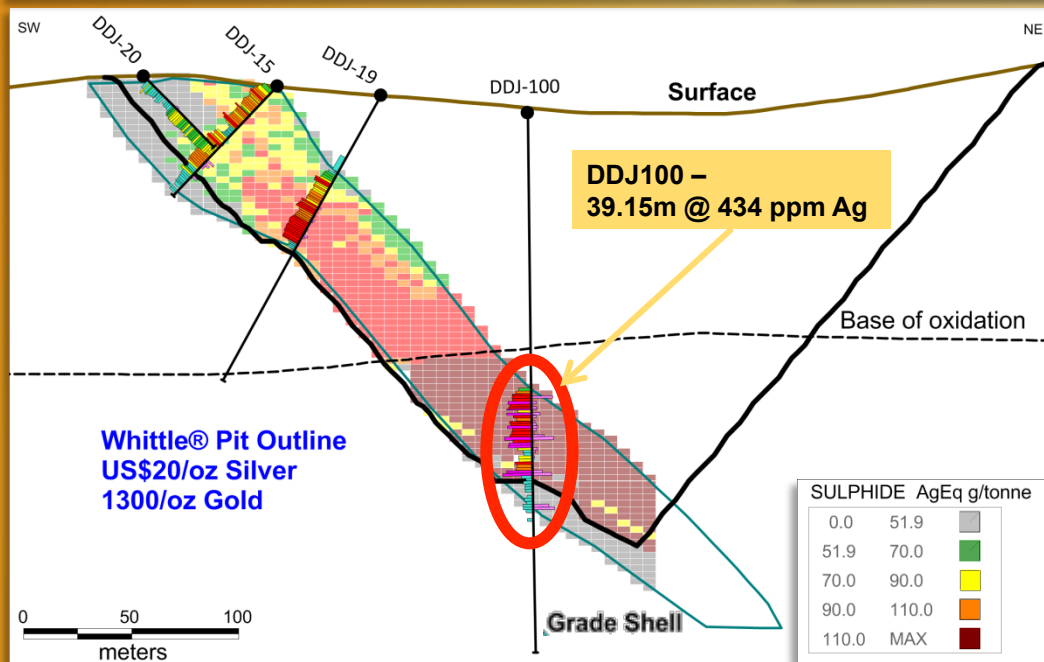
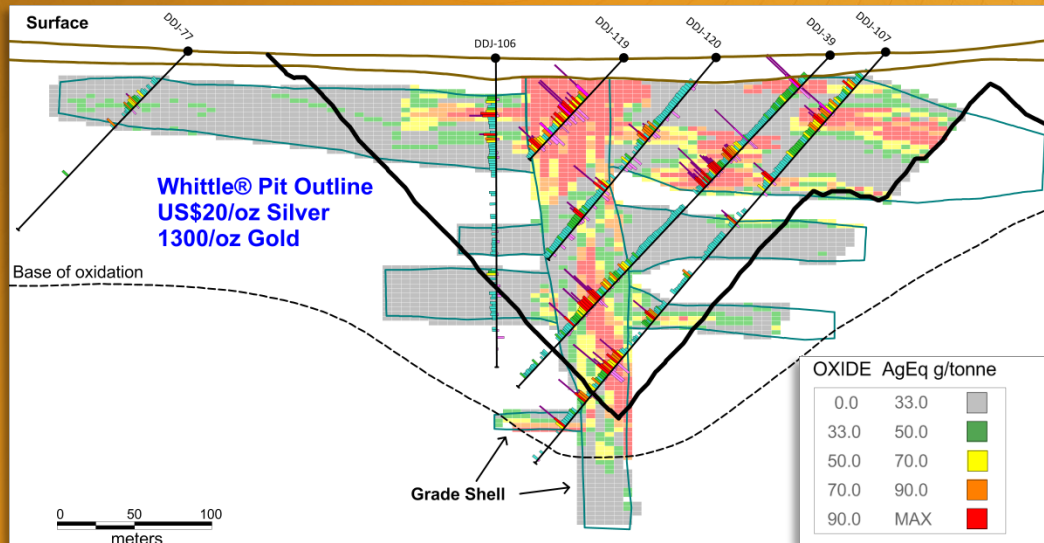
- **Mirasol / Coeur d'Alene JV - 49/51%**
- **Coeur d'Alene Earning 61% for Bankable Feasibility**
- **Morocha / La Negra Zone Maiden Resources Delivered May 2011**
- **Exploration Drill Program (Two Rigs)**
- **Resource Expansion Drilling - New Exploration Targets**

Joaquin – Drilling New Exploration Targets

- Large Silver/Gold System
- Multiple Mineralized Trends – New targets
- Morena & Morocha Northwest drilling



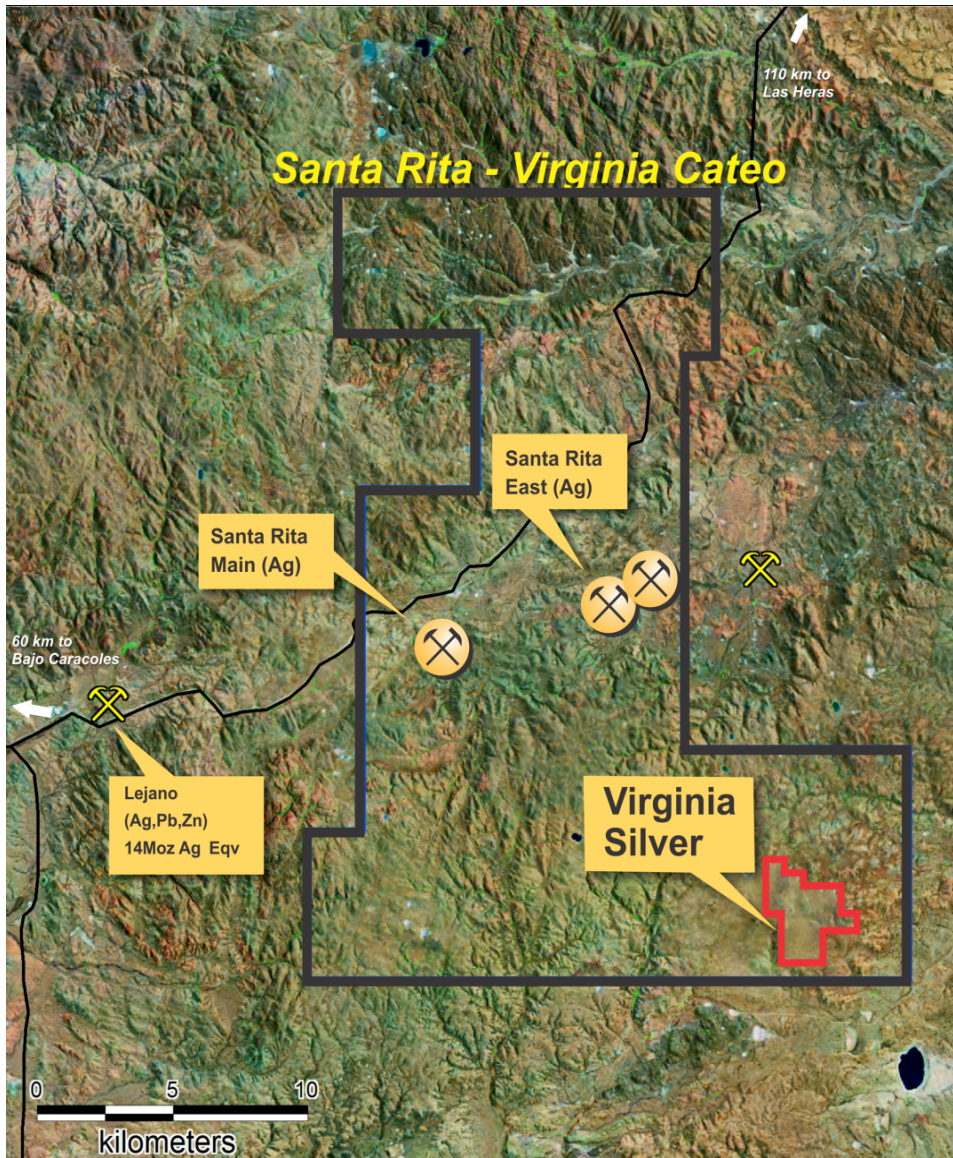
Joaquin – Resource Cross Sections



- La Negra – Vertical High-Grade Feeder with Horizontal Mantos
- Morocho simple shallow-dipping structural zone
- Scope to improve resource by refining modelling
- Both Morocho & La Negra open at depth
- Deepest Hole in Morocho is highest grade intersection → open at depth
- New Drilling in Progress



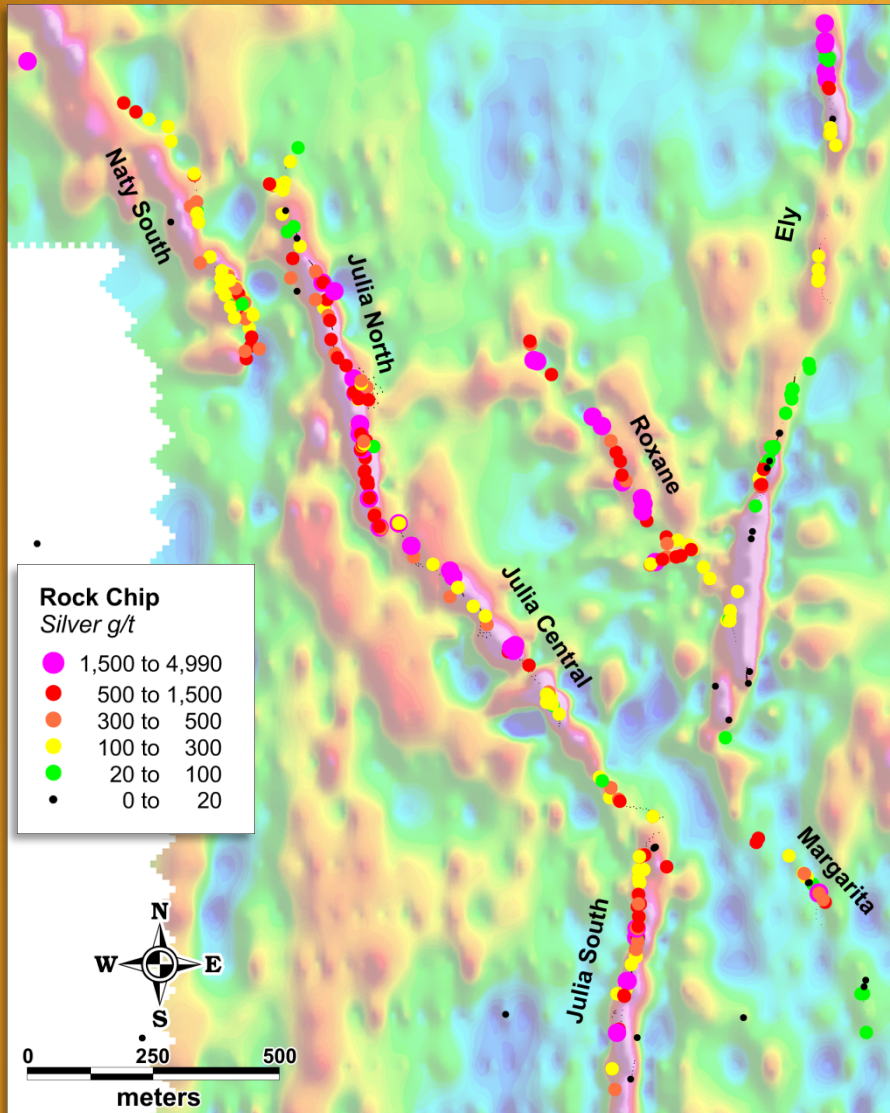
Virginia Silver Project



- 100% Mirasol Project - > 9600 metres veining defined
- First Drill Program Completed - June 2011 – 117 holes for 9403 metres
- 1530 metres of Strike of Mineralized Vein Segments drilled
- Quality ounces - Oxidized at Surface to up to 100 metres depth
- Surface Program - New Structures - geophysics, outcrop
- Plan to commence preliminary resource modelling before end of 2011

Virginia Silver Project

High grade Rock Chip / Channel Results over 9600 meter of veining



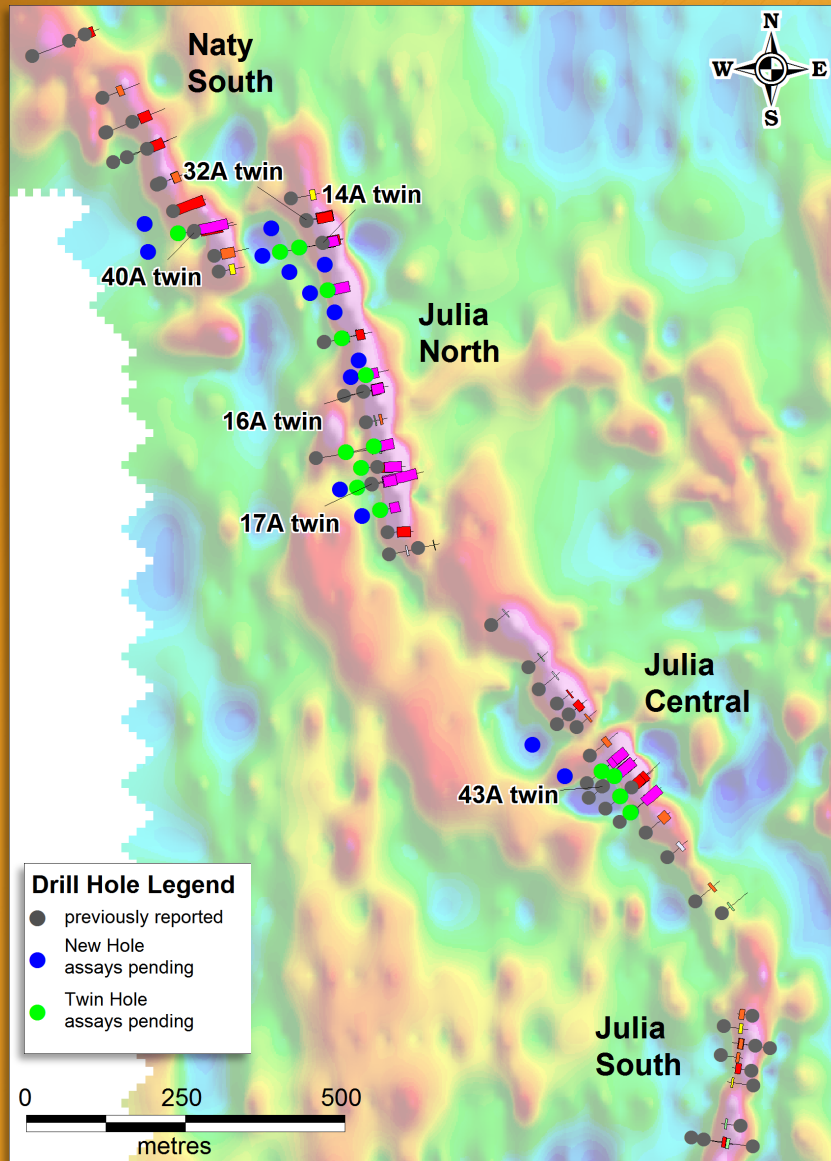
Average of all Channels

Vein	Channel Composites (number)	Indiv. Samples (no.) (m)	Minimum True Width (m)	Silver (g/t)	Lead (%)
Julia	58	162	1.76	805	1.16
Ely	20	59	1.39	331	0.39
Margarita	5	9	1.38	555	1.27
Naty (blocks)	16	18	n/a	298	0.75
Priscila	4	6	0.73	80	0.1
Martina	19	37		110	0.1

Selected Better Channels

Vein	Sampled Length (m)	Unsampled Gaps (m)	Gaps as % of Total Length	Total Length (m)	Silver (g/t)	Lead (%)
Julia	4.3	-	-	4.3	487	0.48
Julia	3.26	2.62	45%	5.88	1,368	1.55
Julia	0.7	-	-	0.7	4,070	2
Julia	3.57	0.17	5%	3.74	1,592	1.82
Julia	3.63	0.1	3%	3.73	1,042	0.75
Margarita	1.5	-	-	1.5	1,479	0.62
Naty	0.37	-	-	0.37	557	0.74
Naty	0.5	-	-	0.5	401	0.41
Ely	2.21	0.1	4%	2.31	1,430	1.21
Ely	0.81	0.02	2%	0.83	2,097	0.27
Ely	1.2	-	-	1.2	596	0.36
Martina	0.65	-	-	0.65	335	0.12
Martina	0.88	-	-	0.88	220	0.19

Virginia - Summary of First Season's Drilling



- Seven Month Drill Campaign completed
- 117 holes totalling 9403 Metres Drilled in the Virginia Vein System
- Includes 85 holes in Naty South and Julia North Central & South
- Includes 22 Twin Holes
- Includes six scout holes in new structures, with significant intercepts

Drill Intercepts - Silver Gram Metres
silver grade (g/t) * true thickness (m)

- > 5,000 to 11,389
- > 1,000 to 5,000
- > 500 to 1,000
- > 300 to 500
- > 150 to 300
- < 150

Virginia – Summary of 2010-2011 Drilling Naty , Julia North/Central/South Veins

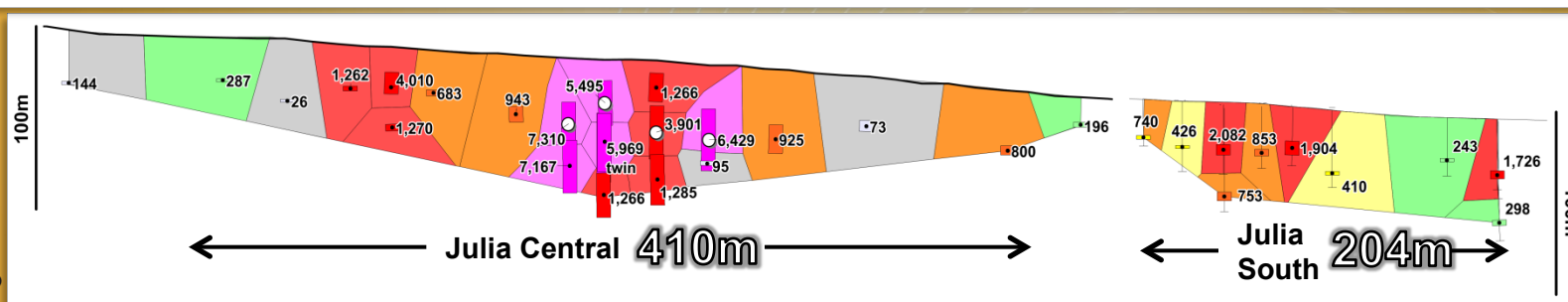
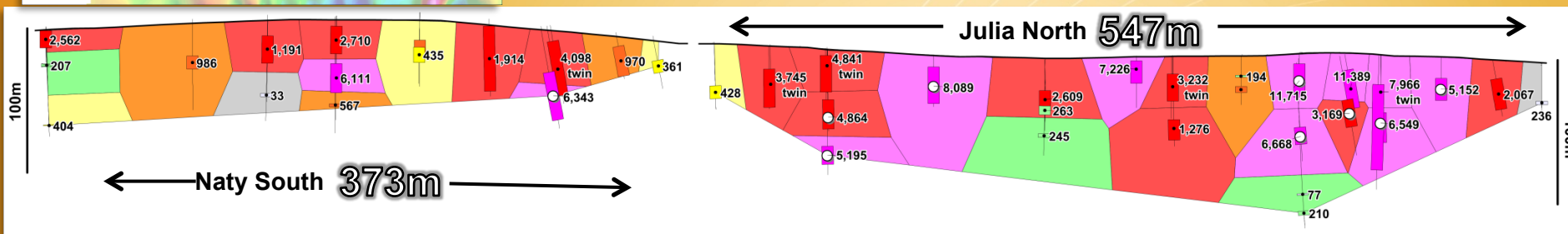
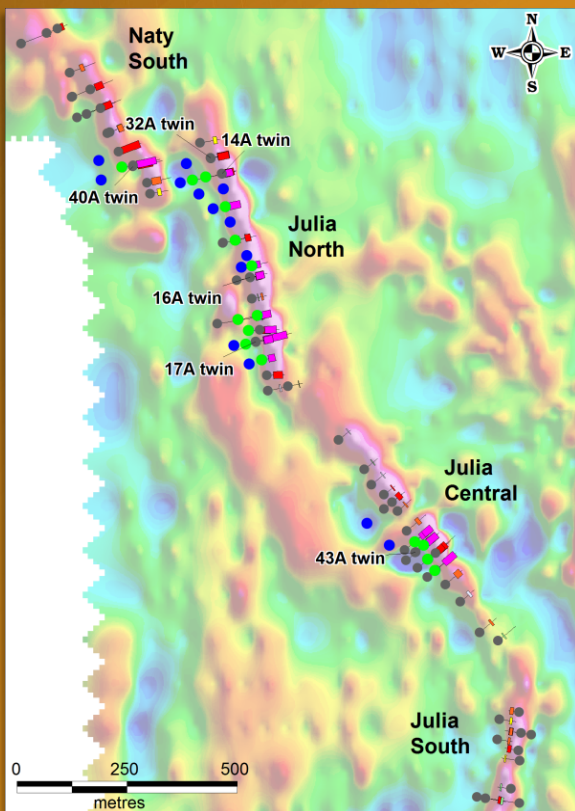
Systematic Drilling of 2200 meters strike of a 9600 meters of Veining

Outlined 1530 meters of Strike of Silver Mineralization in a series of shoots to depths in excess of 100 meters

Drill intersections show high-grade structure with broad lower grade halo

Intensely Oxidized silver mineralization to Base of Drilling

At surface, High Quality Silver ounces may be amenable to low cost, open cut mining



Virginia – Drill Results & Twin Drill Holes

Top 5 Intersections from each Vein Segment

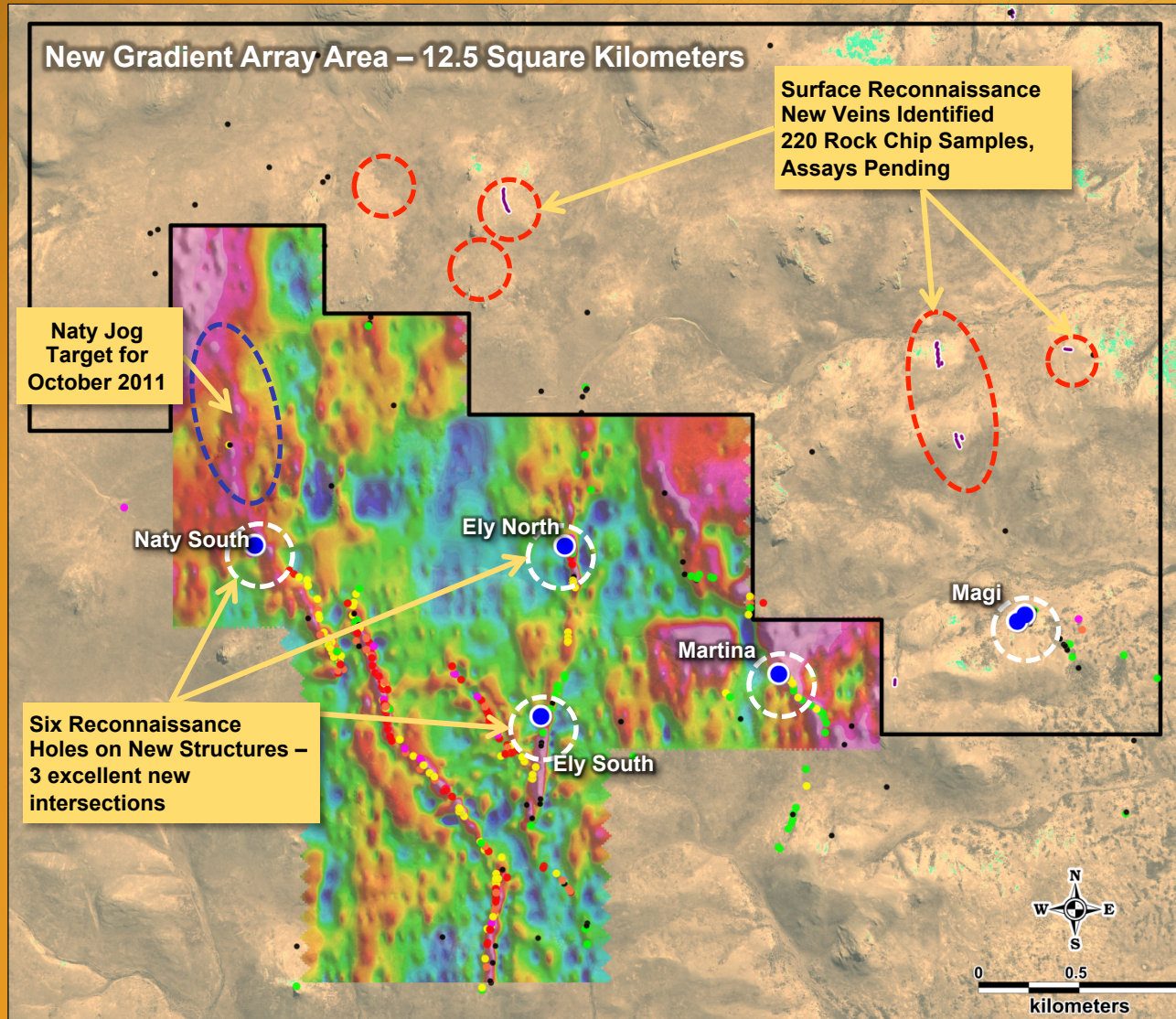
hole	intercept from (m)	intercept to (m)	true width (m)	Ag LWA (g/t)	Ag grade x true thickness (g/t * m)	LWA recovery %
Naty South						
VG-041*	46.00	93.50	44.64	142	6,343	88
VG-053	46.70	75.00	26.59	230	6,111	89
VG-040A**	15.00	66.00	47.92	86	4,098	92
VG-049	10.00	37.00	26.08	104	2,710	80
VG-061	4.00	21.00	15.97	160	2,562	66
Julia North						
VG-006*	9.00	42.00	31.20	375	11,715	69
VG-036	15.40	53.00	36.48	312	11,389	90
VG-015*	12.00	48.00	33.83	239	8,089	61
VG-017A**	27.00	106.90	63.81	125	7,966	98
VG-007*	5.00	27.00	19.60	369	7,226	63
Julia Central						
VG-050*	35.00	68.60	29.10	251	7,310	70
VG-068	64	105.45	35.9	200	7,167	93
VG-056A*	33.40	80.10	40.44	159	6,429	90
VG-043A**	44.00	95.00	46.22	129	5,969	96
VG-042*	16.90	51.00	30.91	178	5,495	66
Julia South						
VG-012	27.00	40.00	9.66	215	2,082	90
VG-023	24.50	36.70	8.63	221	1,904	81
VG-003	39.50	47.70	5.27	328	1,726	98
VG-001	33.50	40.55	4.99	171	853	94
VG-020	62.00	71.70	6.86	110	753	97

* Twin hole assay pending **Twin hole reported 9/06/2011

- Confirm excellent open cut potential and high grade core
- Central High-Grade Vein Structure plus Broad Intersections of silver mineralization to +60 metres wide
- Core recovery issues resolved – now 85% to 100%
- Twin Holes significantly extend +33 g/t silver halo into the footwall
- Although Twin Holes show some reduction in the high-grade zone, zones are wider, many high grade
- Initiating Met and Specific Gravity tests in 2011, towards resource calculation early 2012

Virginia Exploration – Expansion

- Aggressive Surface Prospecting
- Reconnaissance Drilling on New Structures



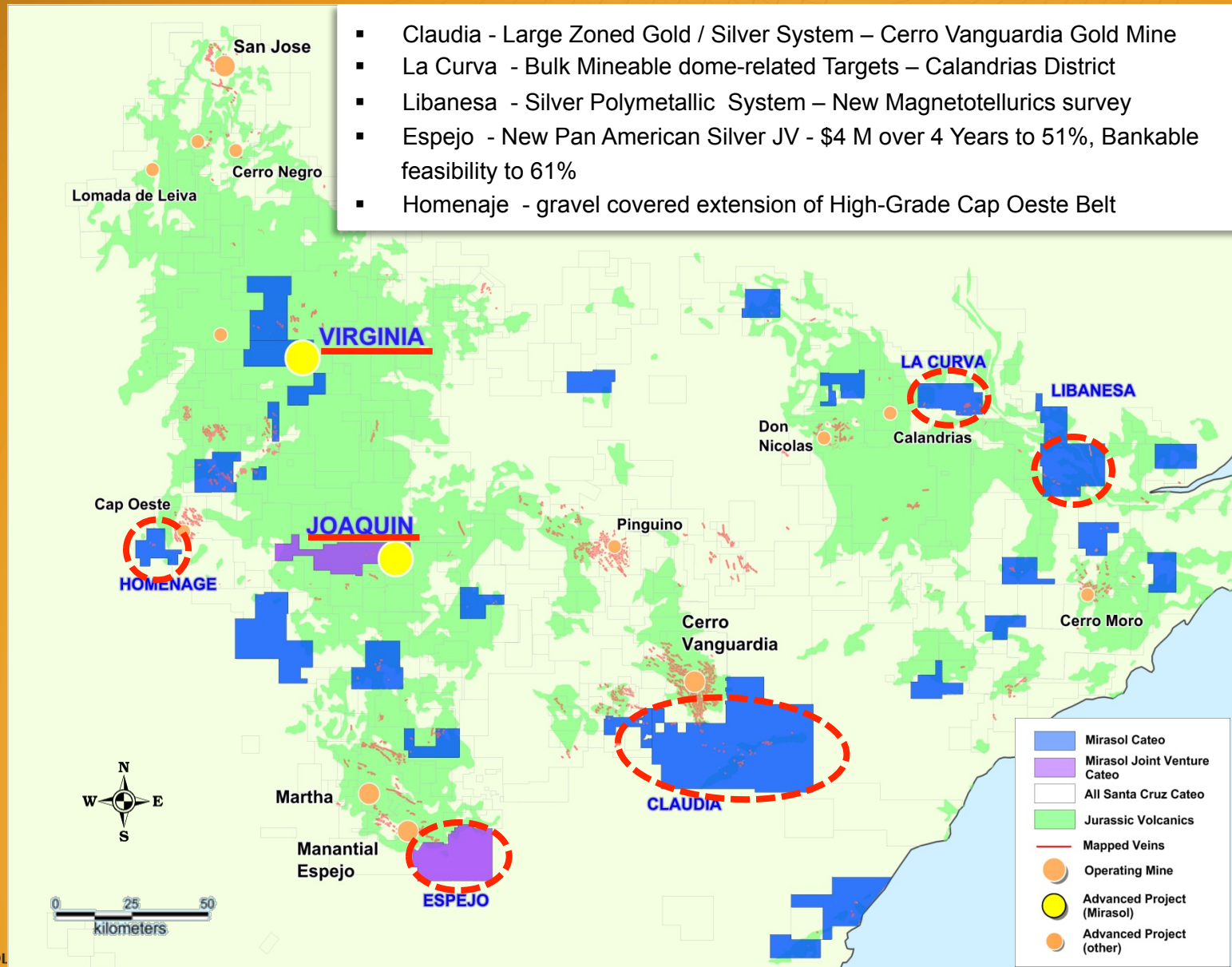
- 6 Scout Drill Holes on New Structures – 3 with important silver intersections
- Expansion of Ground Magnetics (14.2km²) & Gradient Array Geophysical Surveys (12.5km²)
- New Veins identified
- Aggressive drilling October 2011 on new targets

Virginia Project Drill Hole Results – New Veins

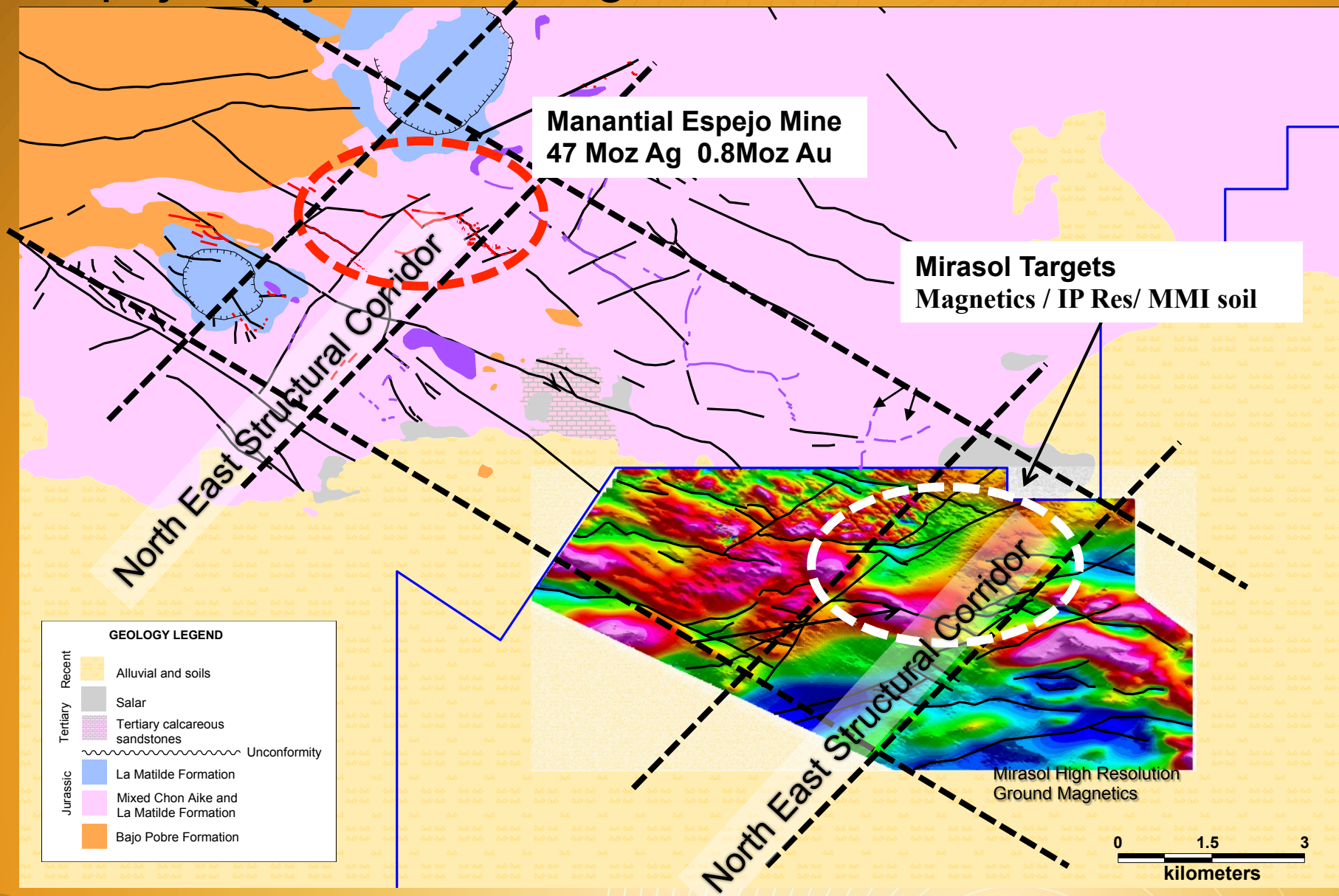
Hole	From (m)	To (m)	Core Length (m)	True Width (m) ¹	Silver (g/t) ^{2,3}	Silver grade x true width (g/t * m)	Core Recovery (%) ⁴
Naty South Vein Extension							
VG-86	24.00	40.00	16.00	11.31	239	2,699	98
including	32.95	37.30	4.35	3.08	704	2,165	97
including	32.95	34.20	1.25	0.88	1,884	1,665	95
Ely North Vein							
VG-87	36.00	59.45	23.45	15.07	35	524	96
Ely South Vein							
VG-88	34.00	47.30	13.30	8.55	174	1,487	98
including	40.00	43.10	3.10	1.99	538	1,072	97
Martina Vein							
VG-89A	31.00	46.00	15.00	10.23	245	2,510	95
including	32.80	38.06	5.26	3.59	530	1,901	89
Magi Vein							
VG-90	37.80	40.75	2.95	2.67	49	130	83
and	55.90	59.00	3.10	3.05	49	150	89
VG-91	98.00	108.00	10.00	8.19	52	424	97

Mirasol Resources - 100% Owned Projects

Aggressive Exploration Programs in Progress



Espejo Project – LOI signed with Pan American Silver



Claudia Gold/Silver Project



MIRASOL RESOURCES LTD

Discovery Through Exploration Leadership

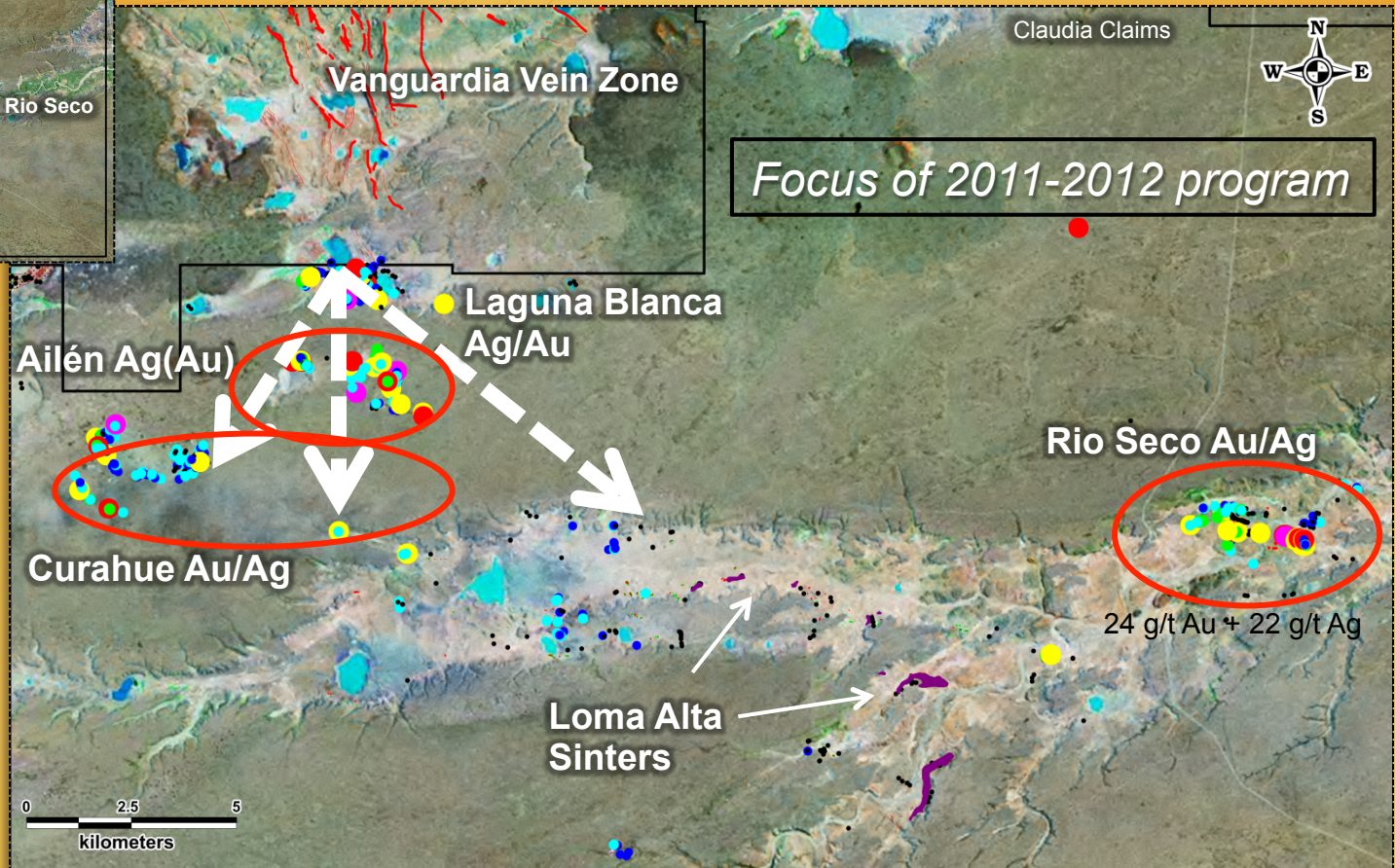
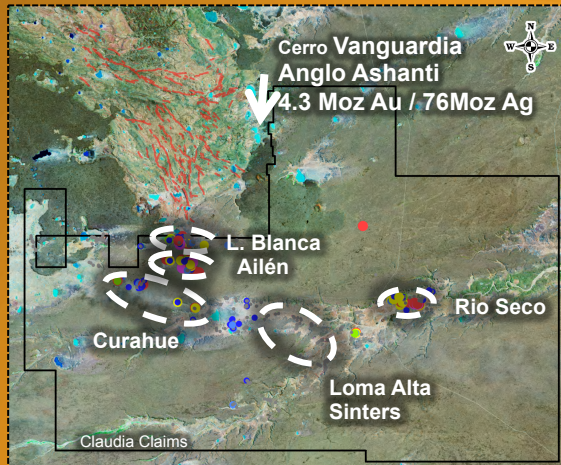
- 100% Mirasol Project – year round program yielding results
- Strike Extent of Anglo Ashanti Cerro Vanguardia Gold/Silver Mine
- Large Silver / Gold System – 4 stand alone Projects on property
- Winter exploration defined completely new vein systems at Ailen & Curahue zones; Au+ Ag mineralized
- drill targets → ore grade Au-Ag at surface - Rio Seco

TSXV: MRZ

Mirasol Claudia Gold / Silver Project

- Extension of the AngloGold Ashanti Cerro Vanguardia 4.3 MOz Gold Field
- Large Zoned System : Silver -Polymetallic to Silver -Gold Epithermal zoning

- Four Distinct Project Areas with shallow Gravel Cover
- Active Mapping / Sampling Geophysical Program – Extends Vein Systems + NEW Veins discovered
- + 350 Rock Chips with Au + Assays



Rock Chip Gold Equivalence (Au*(Au/42))	
● (Magenta)	5 to 80.1
● (Red)	2.5 to 5
● (Yellow)	1 to 2.5
● (Green)	0.5 to 1
● (Cyan)	0.1 to 0.5
● (Blue)	0.05 to 0.1
● (Black)	0 to 0.05

MIRASOL – 2011-2012 DRIVERS

PROJECT: Joaquin Silver-Gold JV – resource expansion & pre-feasibility

PROJECT: Virginia Silver vein system - new veins drilling aggressively

EXPLORATION: Claudia -100% gold-silver project to be drilled in 2011

STRATEGY: Precious Metals in key emerging regions; delivering growth and shareholder value

