



PRECIOUS METALS SUMMIT VAIL COLORADO

TSX : RV

WWW.REVOLUTIONRESOURCESCORP.COM

Q3 2011

Forward Looking Statements

This Revolution Resources informational material may contain certain "forward-looking" statements and information relating to Revolution Resources which are based on the beliefs of Revolution Resources management, as well as assumptions made by and information currently available to Revolution Resources management. Such statements reflect the current risks, uncertainties and assumptions related to certain factors including, without limitations, exploration and development risks, expenditure and financing requirements, title matters, operating hazards, metal prices, political and economic factors, competitive factors, general economic conditions, relationships with vendors and strategic partners, governmental regulation and supervision, seasonality, technological change, industry practices, and one-time events. Should any one or more of these risks or uncertainties materialize or change, or should any underlying assumptions prove incorrect, actual results may vary materially from those described herein.



About Revolution

- Toronto Stock Exchange: RV
- Location: North Carolina and Mexico
- Significant discovery in the Carolina Slate Belt
- Well positioned in North Carolina
- Large land position in Mexico in prolific gold mining district
- Multiple discoveries by management team



Management and Directors

- Aaron Keay, President, CEO & Director
- Michael Williams, Chairman
- Robert McLeod, VP Exploration & Director
- Georg Hochwimmer, Director
- Bryan Slusarchuk, Director
- Pete Evans, Sr. Project Geologist
- Katie Lucas, Sr. Project Geologist
- Jonathan Richards, CFO



Capital Snapshot

Completed IPO Q2 2010

Issued & Outstanding:

57,400,150

Options:

3,675,000 @ 50 cents

1,555,000 @ 70 cents

475,000 @ 80 cents

Agent Warrants:

697,950 @ 50 cents

900,000 @ 80 cents

Fully Diluted:

63,887,500

Working Capital (Apr.15,2011):

\$6,000,000

Management Ownership:

Approx. 22.5%

Average Daily Volume (3 months):

201,530

Analyst Coverage:



PARADIGM
CAPITAL

CAPITAL MARKETS

HAYWOOD
SECURITIES INC.



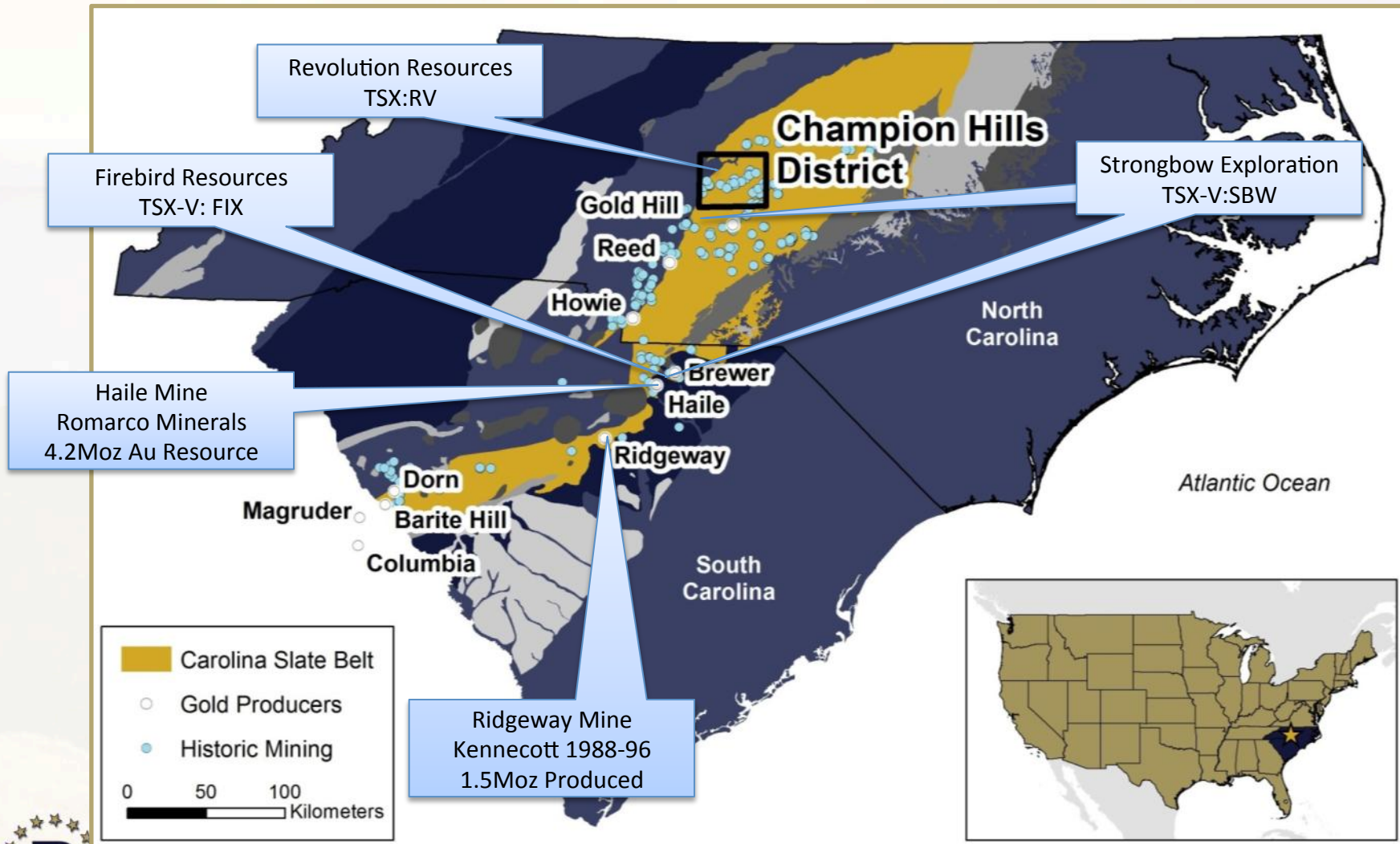
Data accurate as of July 2011

Share structure and working capital accurate as of April 15, 2011

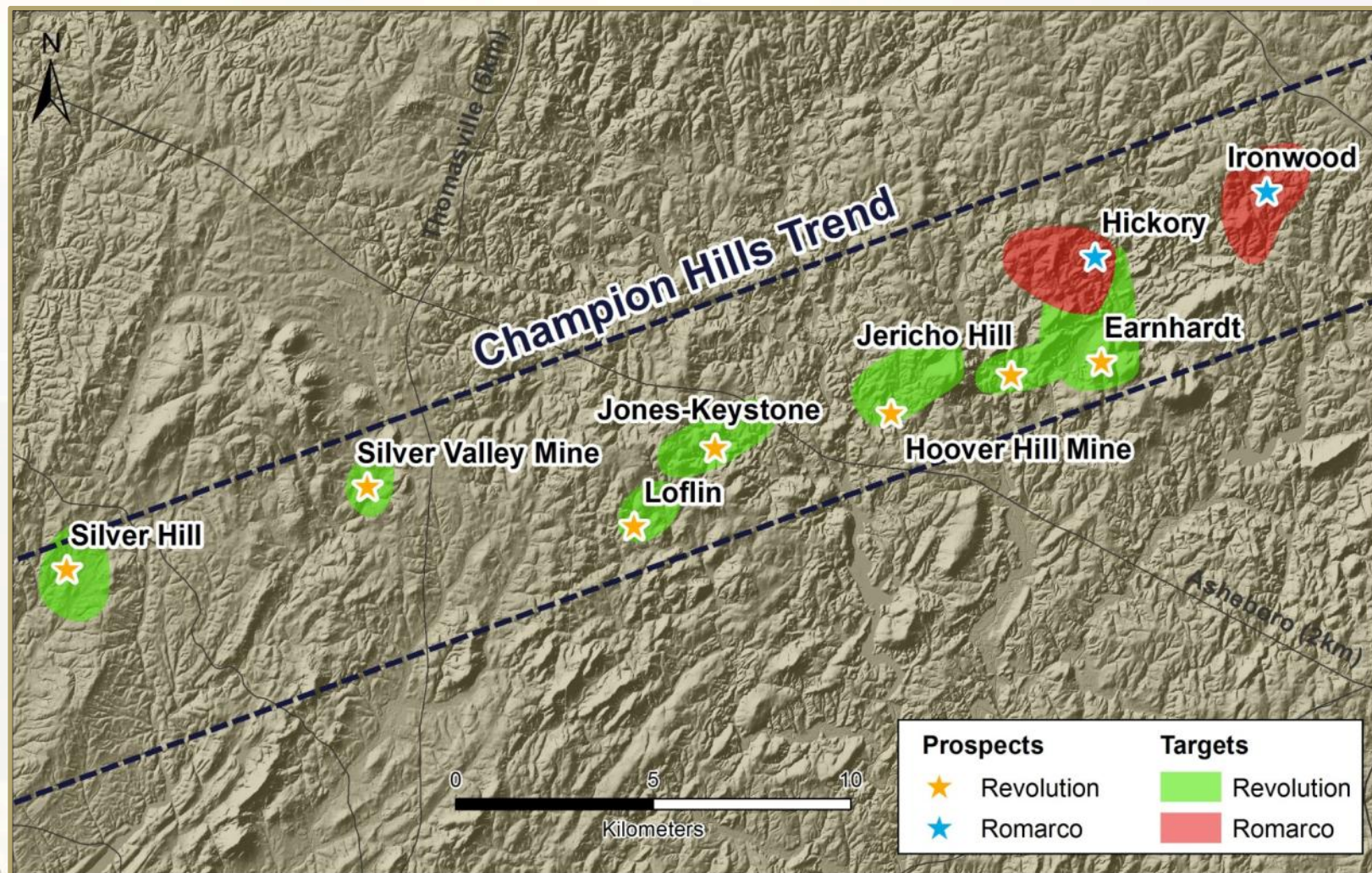
About the Carolina Slate Belt

- Carolina gold rush pre-dates California gold rush as first in United States
- Mined since early 1800's
- Exploration and production by many senior gold companies during 80's & 90's
 - Ridgeway Mine 1.5 Moz Au produced
 - Romarco 4.2 Moz Au resource estimate
- Similar parallel systems and structural controls to Carlin and Battle Mountain trends in Nevada
- Favourable jurisdiction, no exploration permits, private landowners

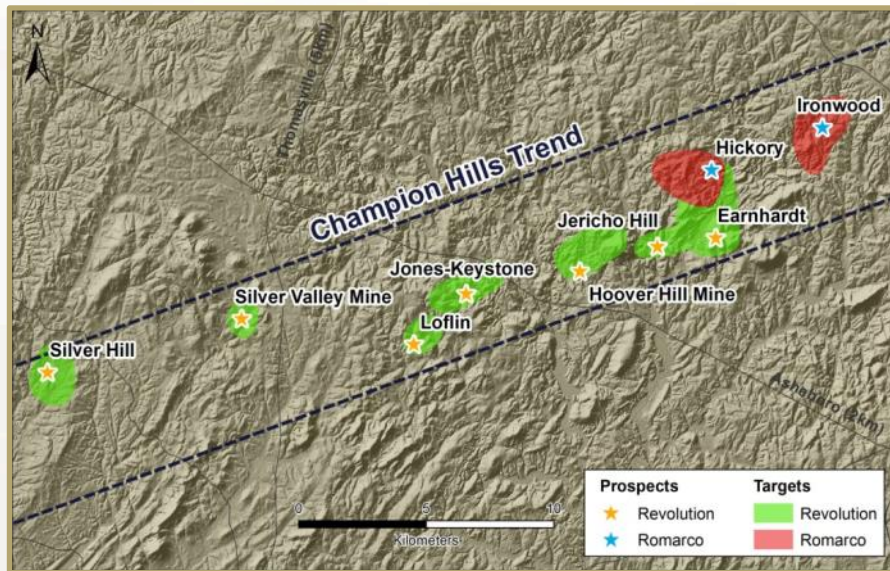
Slate Belt Deposits & Resources



Champion Hills Trend



Comparable Geology to Haile Mine

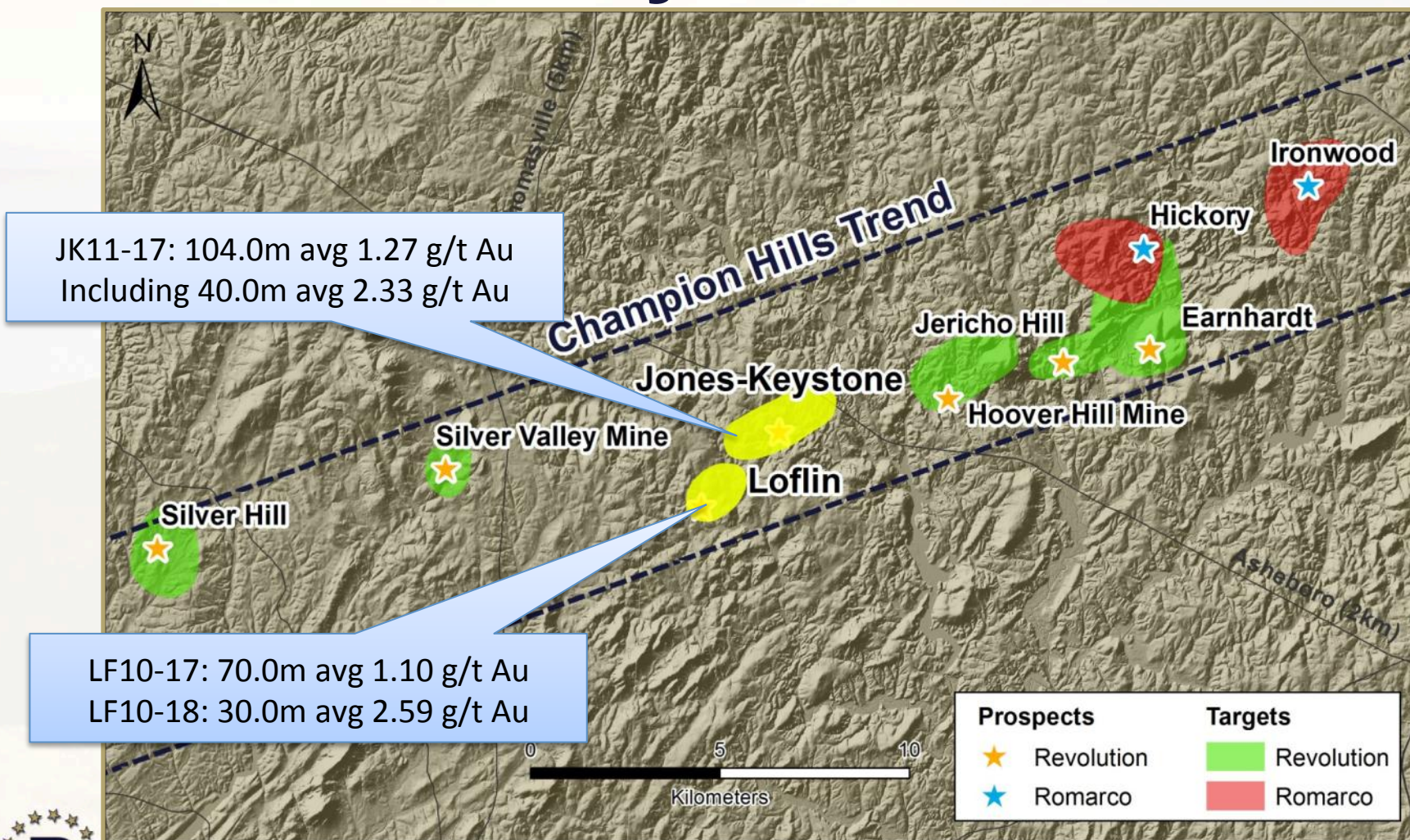


- Similar structural controls between Haile and Champion Hills
- Several million ounce potential deposits

Champion Hills Gold Discovery

- Emerging gold district with historical production
- Four mineralized zones identified
- Currently drilling at Jericho Hill, Jones-Keystone and Loflin
- 7 key properties across 7,500+ acres
- Near surface, bulk tonnage gold mineralization
- Multiple potential deposits throughout the district
- 16,000 total meters drilled in 2011

Jones-Keystone & Loflin

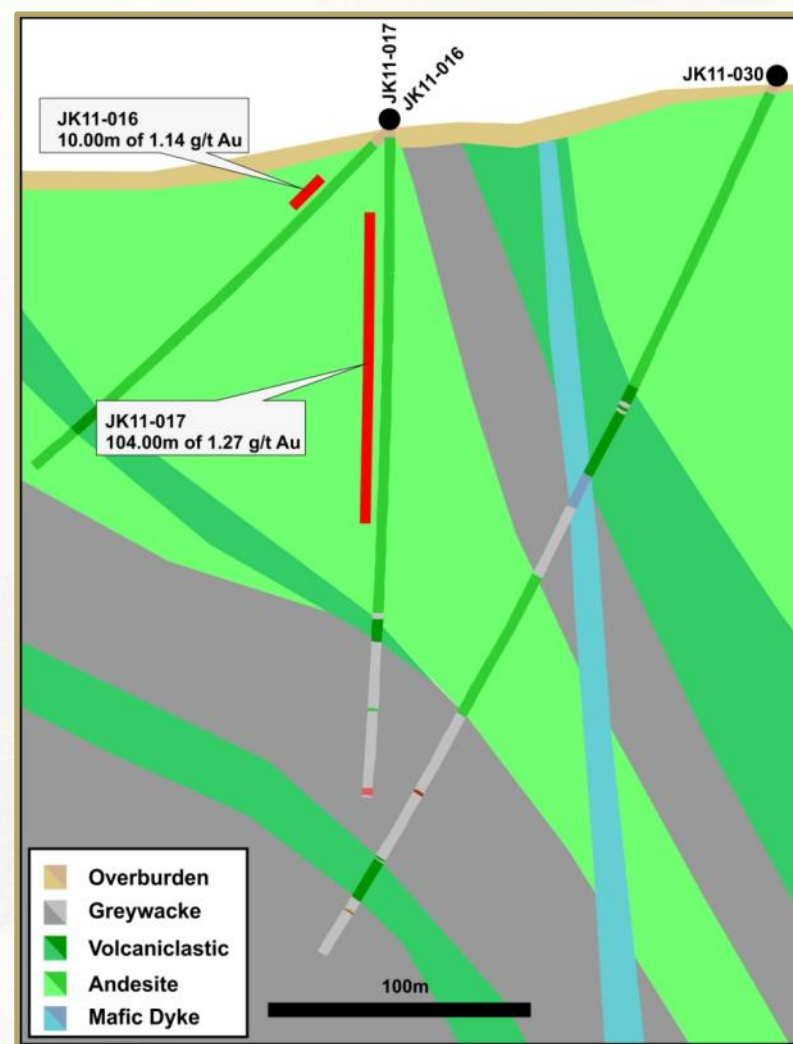


Jones-Keystone & Loflin

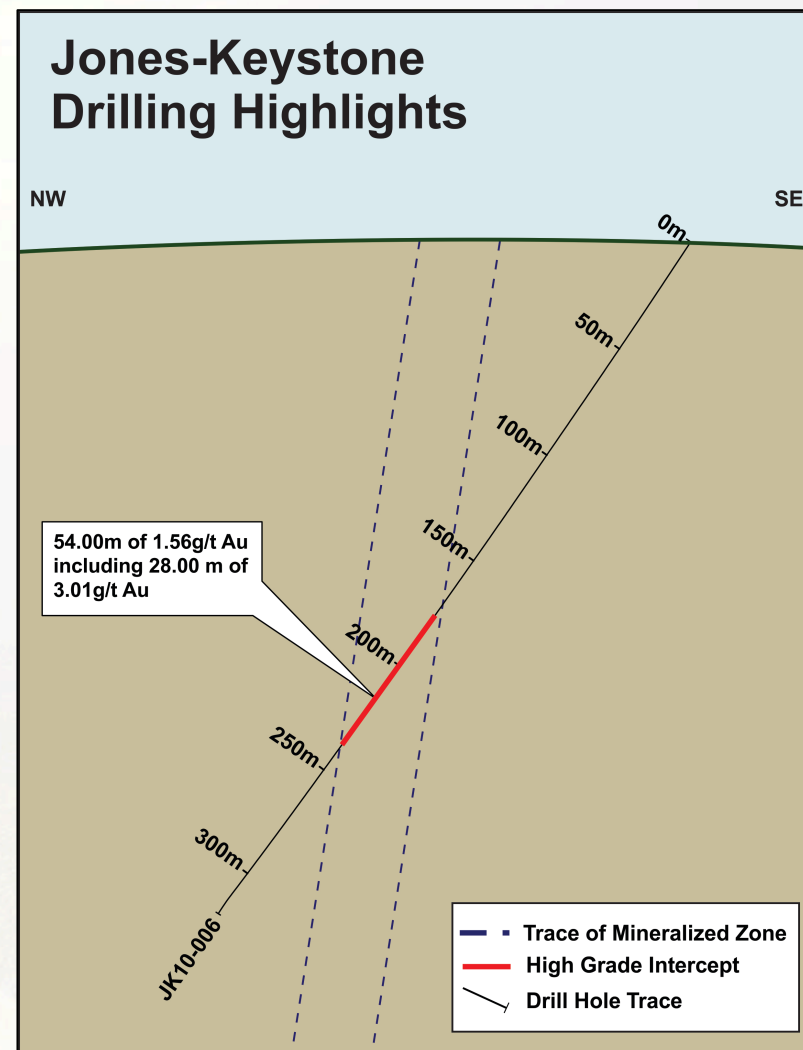
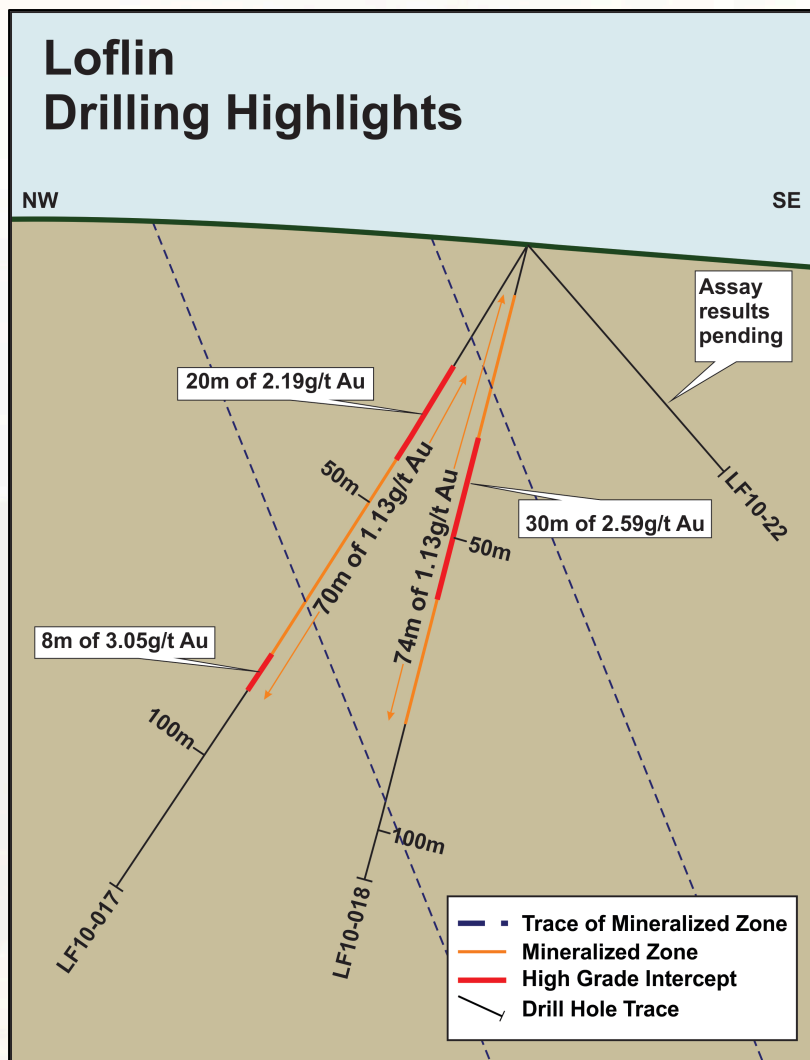
- Mine development in the 1930's: mostly limited to surface saprolite zone
- Noranda owned from 1989-92: mapping, soils, trenching, 23 DDH (3,000m), plus various surface geophysics
- Work ceased due to low metal prices
- 1,900 meters, 8 holes completed at Loflin by RV
- 5,900 meters, 25 holes completed at Jones-Keystone by RV
- Approximately 2-3km along the same trend
- Potential for multi-million ounce super pit = 4-5Moz

2010/2011 Exploration Results

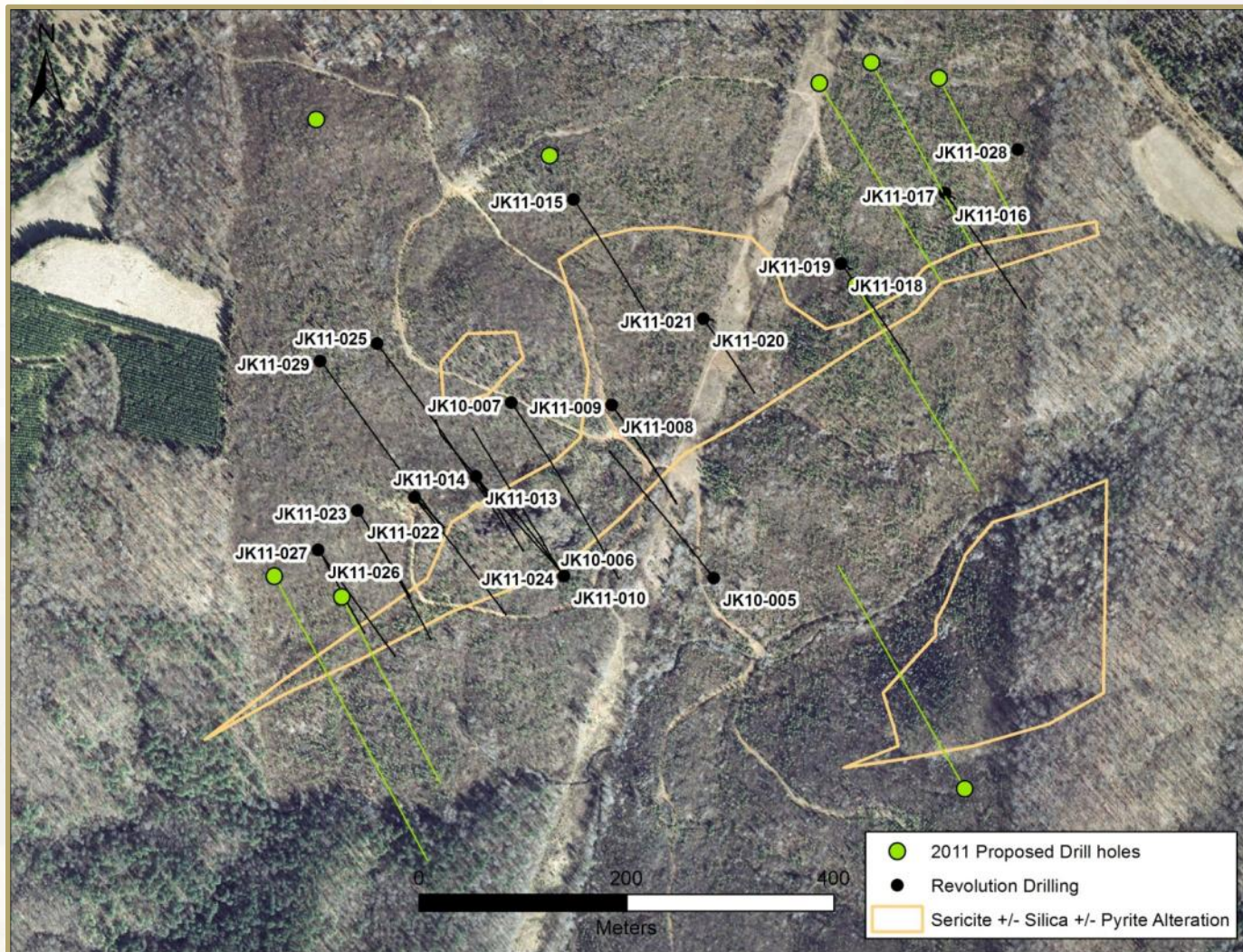
Loflin	LF10-17	70.0m	1.10 g/t Au
	LF10-18	30.0m	2.59 g/t Au
Jones-Keystone	JK10-06	57.0m	1.56 g/t Au
	Incl.	28.0m	3.01 g/t Au
	JK11-017	104.0m	1.27 g/t Au
	Incl.	40.0m	2.33 g/t Au
	JK11-026	26.0m	0.96 g/t Au
	JK11-027	24.0m	0.84 g/t Au
	JK11-028	12.0m	0.94 g/t Au



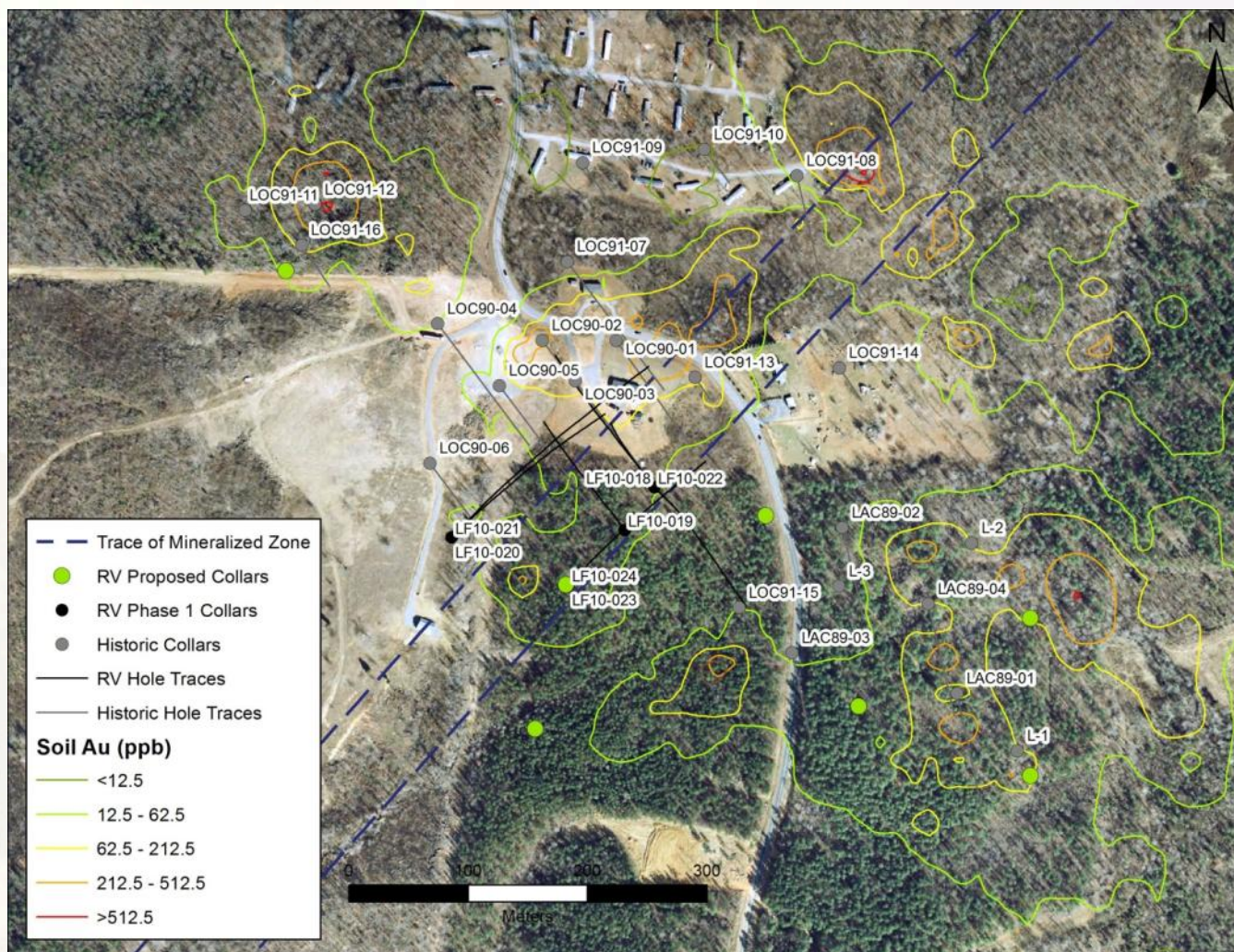
Phase I Drill Results



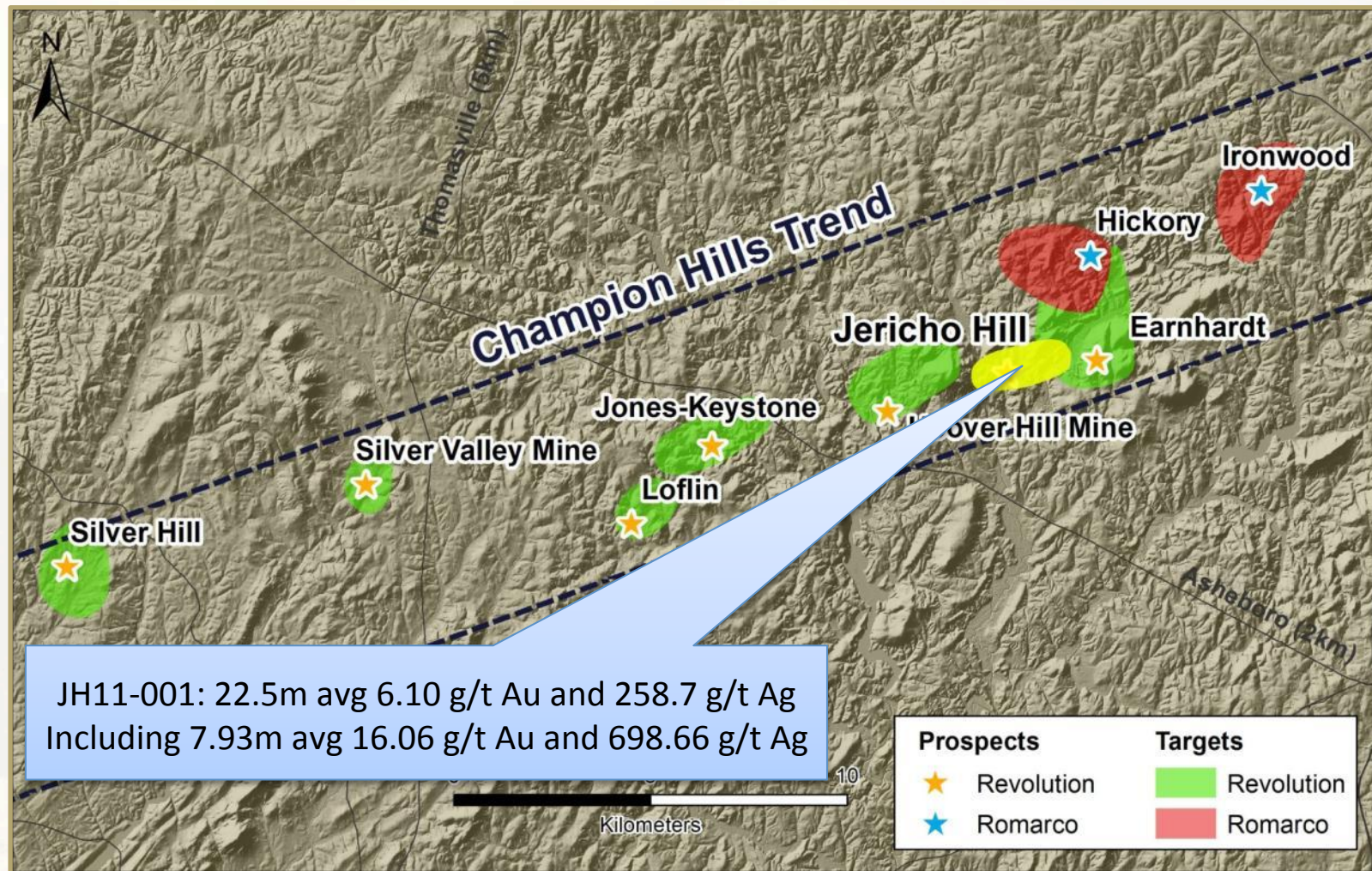
Drill Hole Locations Jones-Keystone



Drill Hole Locations Loflin



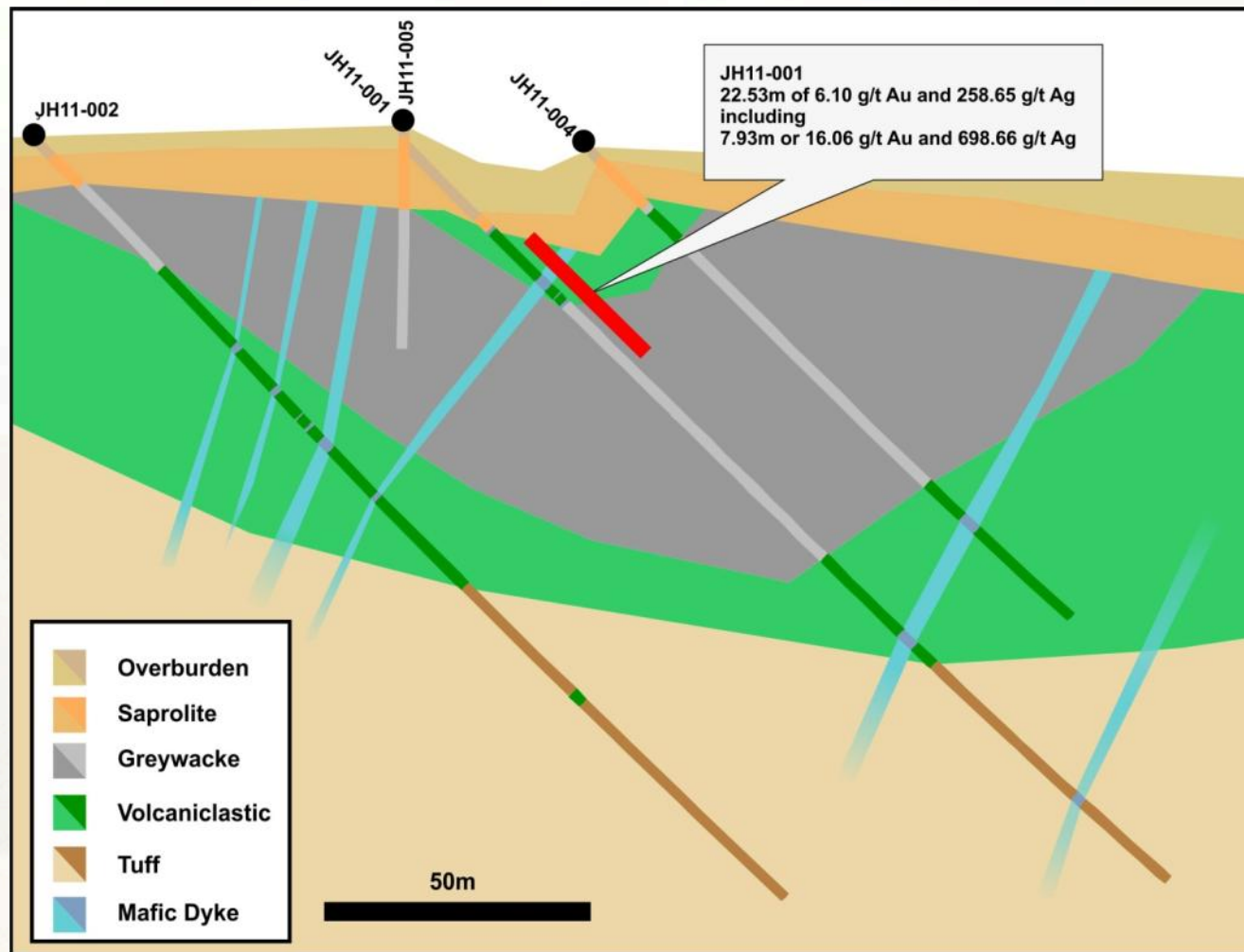
Jericho Hill



Jericho Hill

- Newly discovered occurrence of gold and silver rich altered and veined sediments
- JK11-001: 22.5m avg 6.10 g/t Au, 258.7 g/t Ag including 7.93m avg 16.06 g/t Au, 698.7 g/t Ag
- Approximately 8km from Jones-Keystone on trend
- No previous known history of exploration or lode production
- Historically mined for alluvial gold
- Current interpretation is that the mineralized zone has a subhorizontal orientation
- Follow up drilling to occur this summer

Jericho Hill



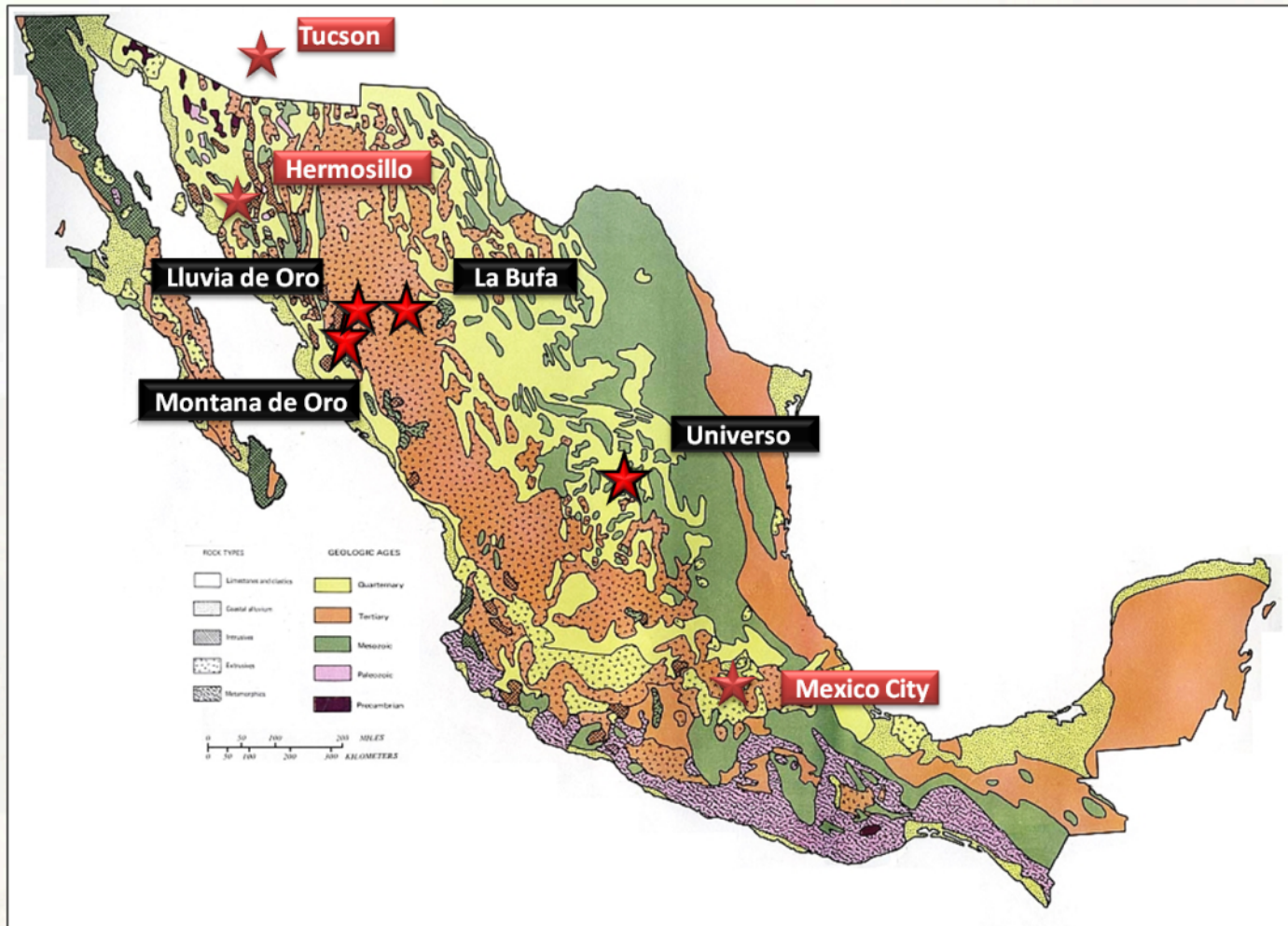
September 2011



TSX: RV

WWW.REVOLUTIONRESOURCESCORP.COM

Property Locations



UNIVERSO

Regional Deposit Trend

goldcorp inc.



 GRUPO MEXICO

newgold

PENASQUITO MINE

17.8 Moz Au | 882 Moz Ag

CAMINO ROJO MINE

1.4 Moz Au | 52 Moz Ag

MEDINA PROPERTY

6.85G/T AU IN JASPEROID

NAVARRO PROPERTY

47,000T @ 16G/T AU, 900G/T AG

CHARCAS MINE

6,000 TPD, 150G/T AG, 5.3%ZN

CERRO SAN PEDRO MINE

3.4 MOZ AU | 60.7 MOZ AG



Universon

- 315,000 Hectare contiguous property on prominent NNW trend between Penasquito/Camino Rojo to north and Charcas to south
- Immense potential, largely unexplored
- Small mine production
 - Cinco Estrellas: 47,000 tons @ 16 g/t Au, 900 g/t Ag
 - Esquivel: 2,400 tons of 13 g/t Au, 90g/t Ag
- High-level low-sulphidation epithermal Au-Ag geology and geochemistry throughout property with key trace elemental signatures such as Hg, Sb and As
- Entire claim block flown with 200m spaced airborne magnetics and radiometrics

Navarro Targets - Universo

- Small mine production
 - Cinco Estrellas: 47,000 tons @ 16 g/t Au, 900 g/t Ag
 - Esquivel: 2,400 tons of 13 g/t Au, 90g/t Ag
- Historic drilling encountered 1.5m of 121.0 g/t Au within 21.3m of 11.7 g/t Au and 37 g/t Ag starting at 126.5m, SE of Cinco Estrellas.
- Additional drill holes have anomalous Au and Ag
- Majority of targets hosted in carbonate rocks, low angle thrust fault and high angle NNW to EW trending fault controlled mineralization
- High-level low-sulphidation epithermal Au-Ag characteristics throughout property with key trace elemental signatures such as Hg, Sb and As
- Key portion of target under lease, \$3M option to purchase, no NSR

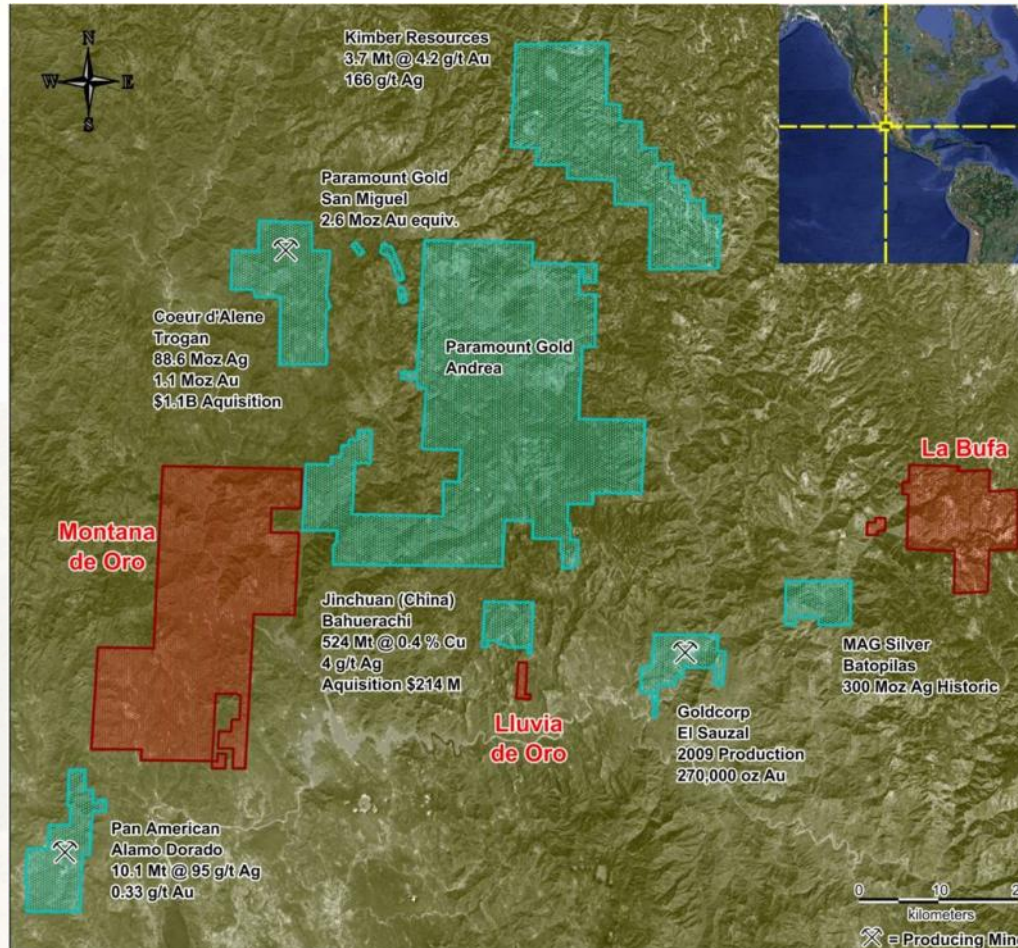
Chiqui Target – Universo

- Circa 1970's-80's underground mining focused on antimony-gold mineralization, <10,000 tons
- High grade Au+/-Ag detected in 1994 and recent sampling, six samples <2.12 g/t Au (high of 7.76 g/t Au) and twenty-five samples >1.0 g/t Au
- Three significant samples with silver, 7,756 g/t Ag with 7.76 g/t Au, 554 and 76 g/t Ag in two other samples
- Anomalous gold over 200m strike length and 40m width minimum dimensions
- Target has never been drilled, 100% owned
- High level low sulphidation epithermal Au-Ag characteristics throughout property with key trace elemental signatures such as Hg, Sb and As

Universe Summary

- Several high quality early stage greenfield gold-silver targets are abundant within the property
- Several are found along a prominent NNE trending linear that connects ore deposits from the south such as Charcas and to the north with Camino Rojo and Penasquito
- A general spatiality of well known deposits along several mineral belts in Mexico predict a deposit should exist within the Universe property boundary

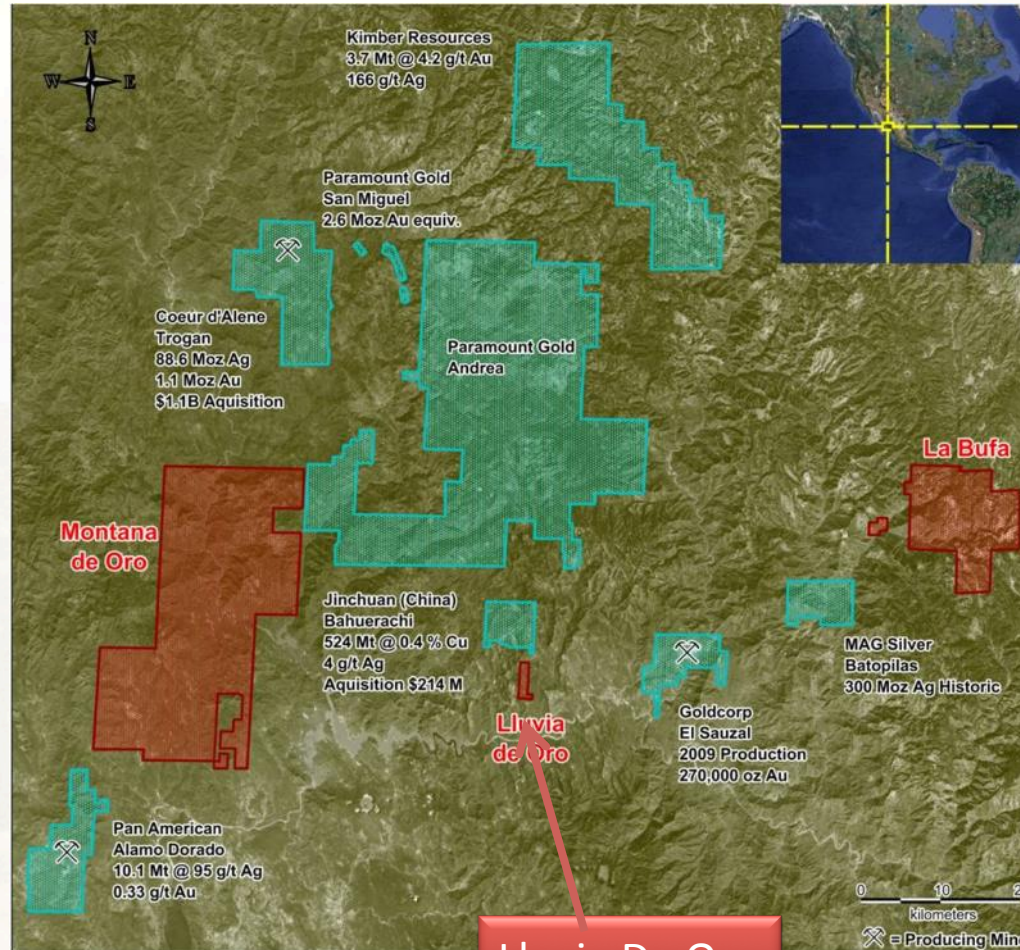
Montana de Oro



Montana de Oro

- Multiple commodity and mineralization styles
- Undrilled Cu-Au-Ag vein swam 'Subi Target' with porphyry style alteration
- 3 Additional unexplored porphyry centers: La Mora, Babovahui, and Chapote
- Several targets near drill stage, previously drilled systems require further investigation to develop new ideas and targets

Montana de Oro



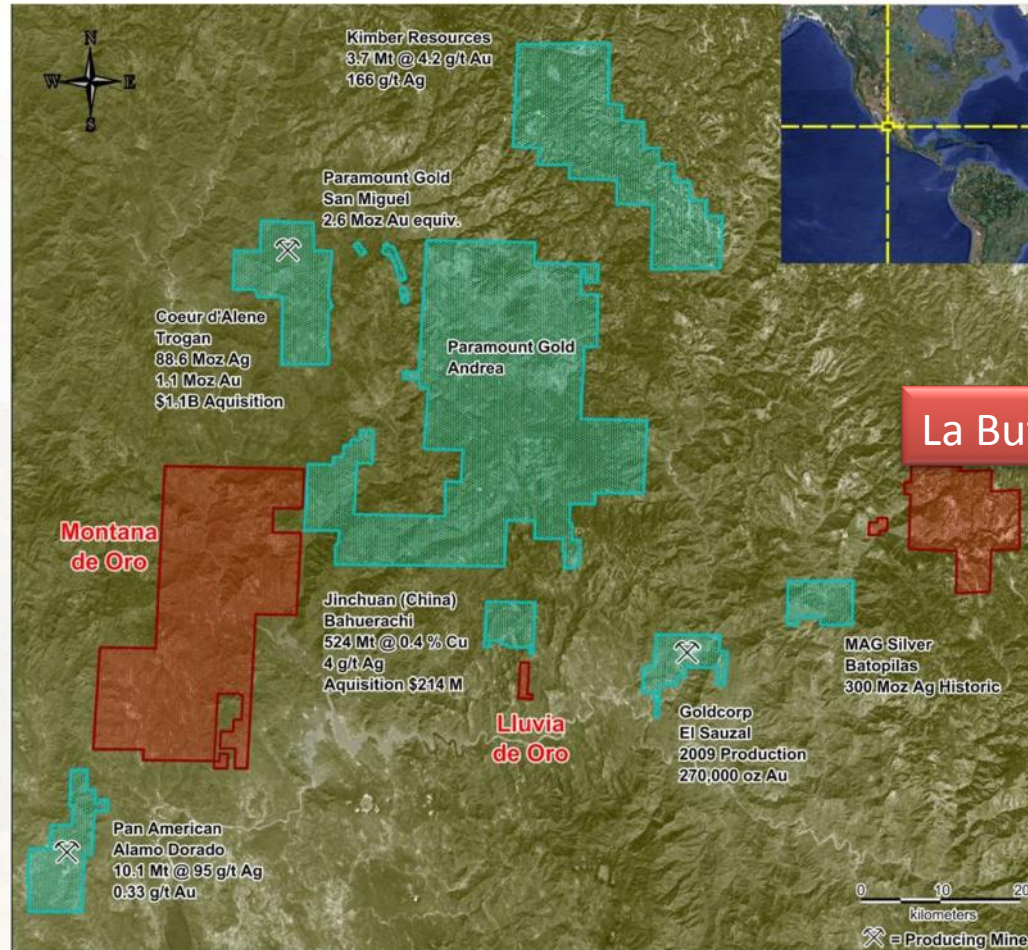
Lluvia de Oro-Chihuahua

- One of Mexico's first gold mines, produced 100,000t at 95 g/t Au and 865 g/t Ag
- Underground samples avg 4.65 g/t Au and 32.71 g/t Ag including 45.6 g/t Au over 1.6m
- Most underground sampling data is historic, 1980's from Consejo and Luismin from parallel vein-jasperoid and brittlely sheared system
- Requires additional underground work including more sampling and structural mapping, may unlock abundant high grade potential
- Along ENE trend with El Sauzel and Batopilas
- Near drill ready target

Lluvia de Oro-Underground



Montana de Oro



La Bufa-Chihuahua

- 1940's production: 1Mt at 2.9 g/t Au and 2.5% Cu from Carmen vein system
- Along prominent ENE trend of significant mineral deposits such as Batopilas (MAG Silver), El Sauzal (Goldcorp), Alamo Dorado (Pan American)
- Additional sub-parallel precious and base metal veins with similar grades and unexplored by modern techniques
- Limited surface work by Lake Shore, never drilled

La Bufa-Carmen UG workings



Summary

- Significant new gold discovery in North Carolina
- Significant land package in Mexico on trend with major gold producers and new discoveries
 - Penasquito (Goldcorp) 17.8Moz Au and 882 Moz Ag
 - Cerro San Pedro (New Gold) 3.4Moz Au and 60.7Moz Ag
- Year round exploration in multiple regions of the world
- Second largest land owners in the Slate Belt: >7,500 acres
- Management team with proven track record for discoveries and execution
- Capital resources available to execute exploration plans



Contact Information

Aaron Keay

President, CEO & Director

aaron@revolutionrc.com

Office: (604) 678-4024

Mobile: (604) 323-6911

Dylan Berg

Manager, Investor Relations

dylan@revolutionrc.com

Office: (604) 681-5672

Mobile: (604) 616-1182

Revolution is also listed in the US, OTCQX: RVRCE





Thank you for the opportunity.

TSX : RV

WWW.REVOLUTIONRESOURCESCORP.COM

37