

OJVG GOLD PROJECT SENEGAL



OROMIN EXPLORATIONS LTD.
(TSX: OLE)



OROMIN
EXPLORATIONS LTD.



Statements included here, which are not historical in nature, are forward-looking statements made pursuant to the safe harbour provisions of the Private Securities Litigation Reform Act of 1995, including without limitation, statements as to management's beliefs, strategies, plans, expectations or opinions in connection with the Company's performance, which are based on a number of assumptions concerning future conditions that may ultimately prove to be inaccurate and may differ materially from actual future events or results. Readers are referred to the documents filed by the Company with the pertinent security exchange commissions, specifically the most recent quarterly reports, annual report and material change reports, each as it may be amended from time to time, which identify important risk factors that could cause actual results to differ from these contained in the forward-looking statements.



Capital Structure: as at August 31, 2011

Exchange: TSX

Ticker: OLE

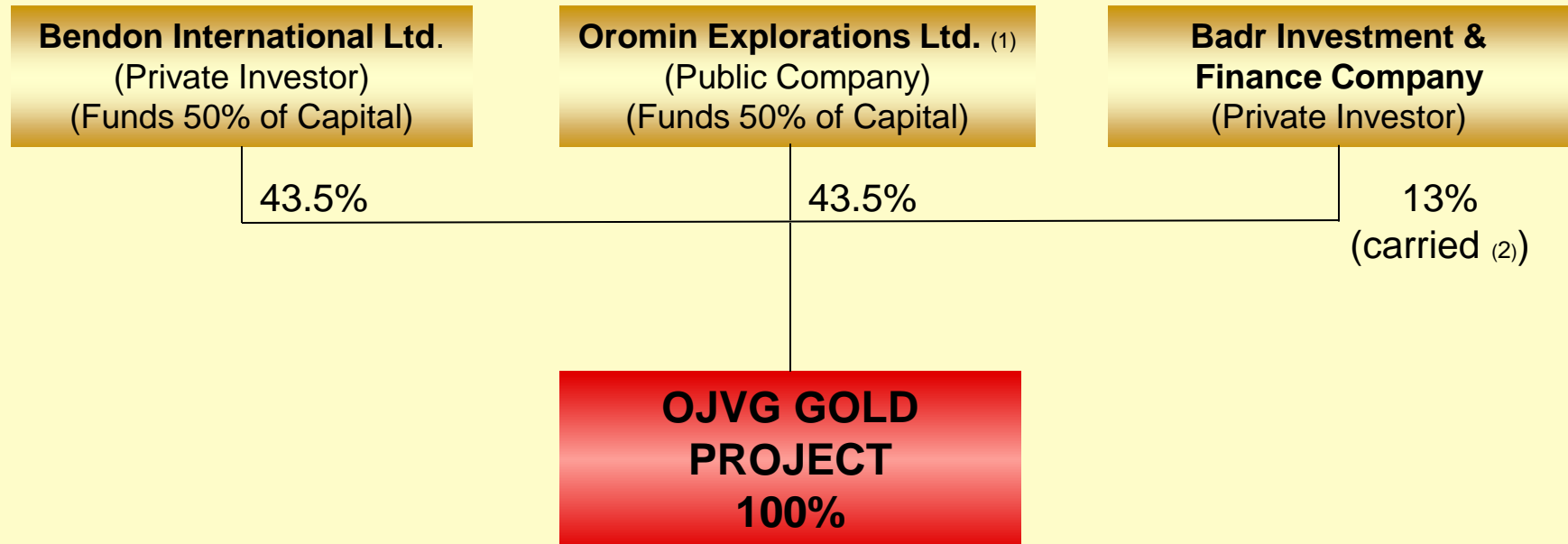
Shares Outstanding – basic	135.6M
Fully Diluted	150.9M
Average Recent Price	C \$0.92
Market Capitalization	C \$139M
Working Capital	C \$9.5M
Debt	None

Shareholders

Insiders & Associates	>20.0%
IAMGOLD	11.9%
Teranga Gold Corp.	13.8%
*Institutional	>15.0%

* Black Rock, ERIG, AGF, Investors Group, Sprott

OROMIN JOINT VENTURE GROUP – OWNERSHIP STRUCTURE



OROMIN, BENDON AND BADR ARE WORKING JOINTLY IN THE EXPLORATION, DEVELOPMENT, FINANCING, AND STRATEGIC ALTERNATIVES WITH THE OBJECTIVE OF MAXIMIZING PROJECT VALUE.

(1) Oromin's Stake in OJVG is held through Sabodala Holding Limited, a company wholly-owned by Oromin Explorations Ltd.

(2) Badr's carried interest is subject to recoupment of capital expenditures and funding partners sunk costs plus interest thereon

OROMIN JOINT VENTURE GROUP – PROJECT HIGHLIGHTS



HIGHLY PROSPECTIVE REGION – A NEW GOLD DISTRICT IN A KNOWN GOLD REGION



ADVANCED, LOW RISK, CONSTRUCTION READY GOLD PROJECT



EXCEPTIONAL ADDITIONAL EXPLORATION POTENTIAL



ATTRACTIVE MINING INVESTMENT DESTINATION WITH STRONG GOVERNMENT SUPPORT



EXPERIENCED AND SUCCESSFUL EXPLORATION AND MANAGEMENT TEAM



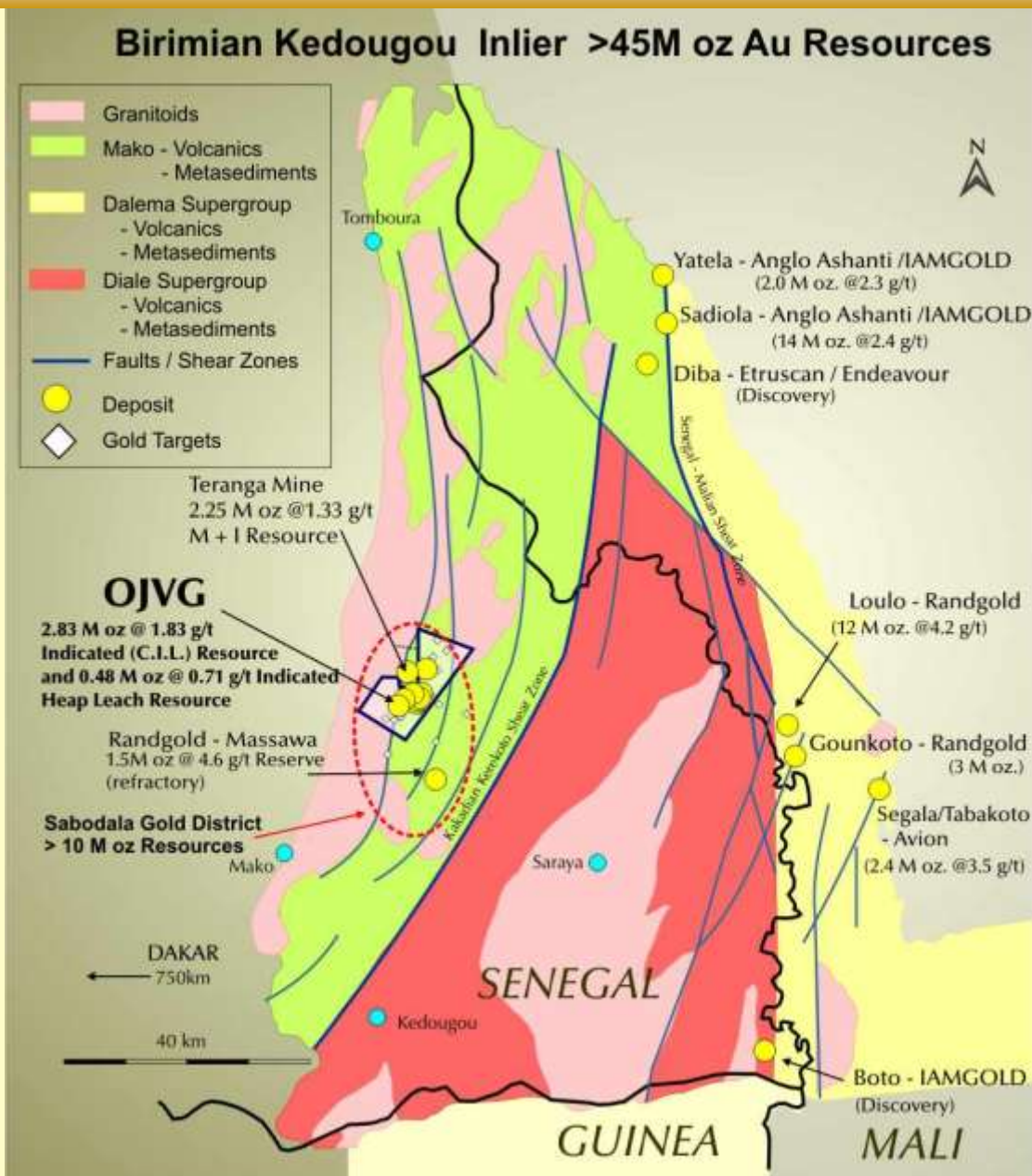
West Africa – Fastest Growing Gold Region in the World

OJVG's drilling success (8 gold deposits*, 7 new discoveries and targets) has played a lead role in transforming Eastern Sénégal into a new gold district

Eastern Senegal is a relatively unexplored emerging gold camp, with one producing mine and more than 10 million ounces of gold resources outlined over the last 3 years.

Senegal is a successful democracy, with efficient civil services, regional banking centre, good infrastructure and favourable tax and royalty terms including;

- Competitive Mining Code
- Minimum 7 year tax free status
- 3% NSR, 10% carried interest to Govt. after payback





2010 FEASIBILITY STUDY

OJVG GOLD PROJECT – 2010 FEASIBILITY STUDY: SUMMARY

At US \$1,200 Gold

- NPV of US \$361 Million
- IRR of 36%
- 9 Year Mine Life
- 2 Year Pay Back

Based on:

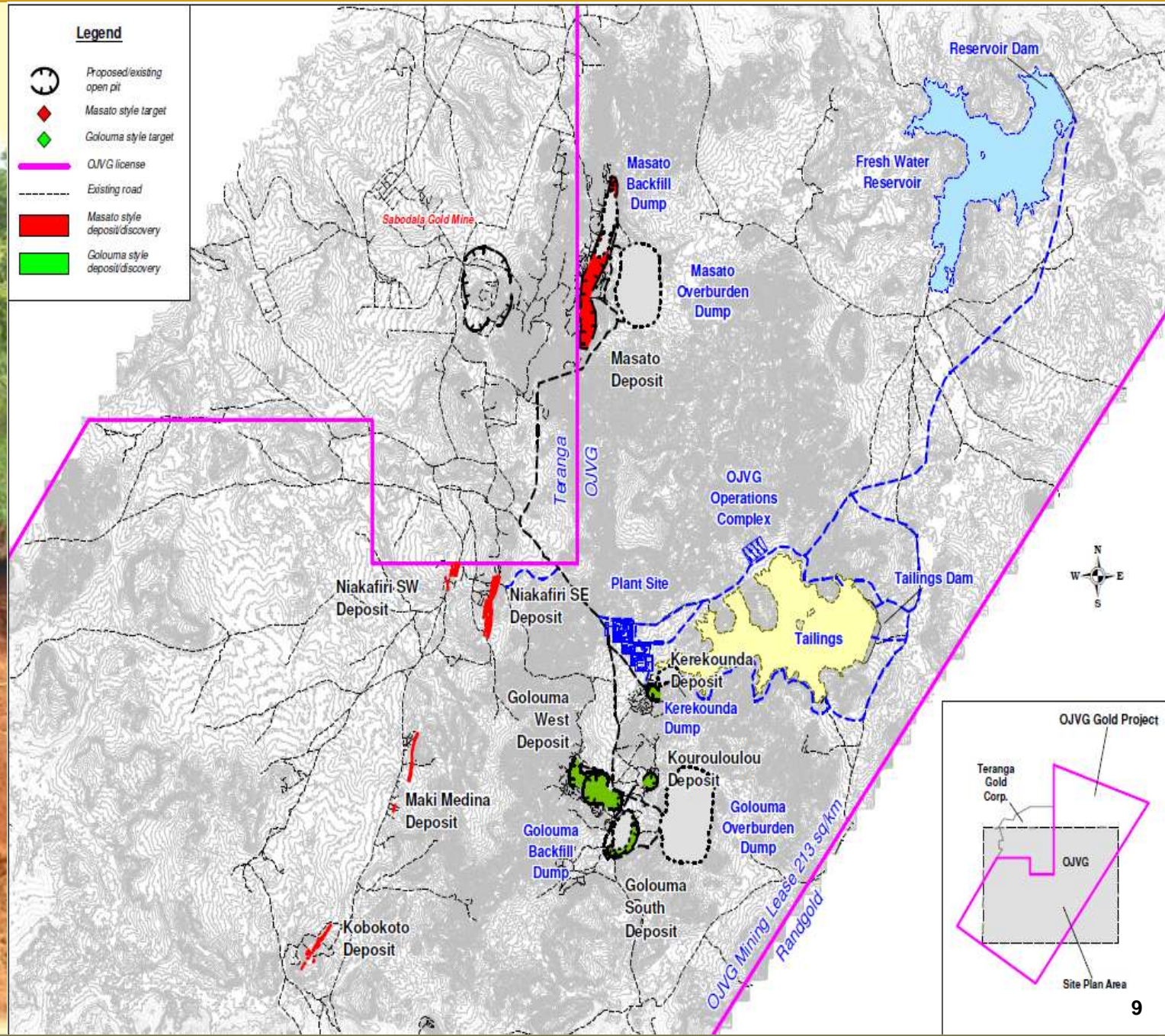
- Upfront Capital of US \$292 Million
- Low Operating Cost of US \$461/ ounce
- Mineable Reserve of 1.42 Million Ounces @ 2.52g/t Gold
- CIL Capacity of 4,250 tpd Ramping up to 7,390 tpd with Soft Oxide Ore Throughout
- 187,000 Ounces Annual Production in Initial 3 Years
- 152,000 Ounces Annual Production over LOM
- Drilling Data to Q1 of 2010 for Five Deposits

UPSIDE BEYOND 2010 FEASIBILITY STUDY

- 30% Resource Increase to January 2011
- Plant Optimization Studies Outline Additional 5,000 Ounces Gold Produced Annually
- Heap Leach PEA Outlines Additional 26,300 Ounces of Gold Produced Annually over 9 Year LOM to Complement CIL Operation
- Underground Resource Potential Identified at Masato
- All Eight Deposits Remain Open to Expansion Both Along Trend and To Depth
- Exploration Program Is Successfully Discovering New Targets, Prospects and Deposits



2010 FEASIBILITY STUDY - PROPOSED SITE LAYOUT PLAN





GOLOUMA STYLE DEPOSITS



GOLOUMA STYLE DEPOSITS

- (INDICATED RESOURCES) – 12.75 Mt @ 3.36 g/t containing 1.38 M oz Au
- (INFERRED RESOURCES) – 1.4 Mt @ 4.09 g/t containing 0.18 M oz Au
- Average Drilling Depth Extent For Above Resource Calculation- 350 metres from surface
- Open to considerable expansion

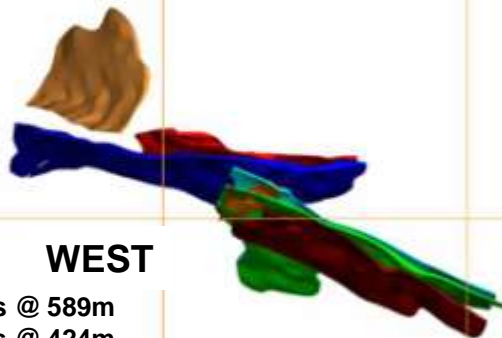


KEREKOUNDA DEPOSIT

Recent Deep Results

7.2 g/t Au over 9 metres @360m
8.0 g/t Au over 11 metres @322m
10.1 g/t Au over 14 metres @334m
10.2 g/t Au over 3 metres @372m

GOLOUMA DEPOSIT



Recent Deep Results

WEST

32.1 g/t Au over 6 metres @ 589m
6.1 g/t Au over 12 metres @ 424m
4.8 g/t Au over 11 metres @ 631m

KOUROULOULOU DEPOSIT

Recent Deep Results

49.8 g/t Au over 7 metres @ 275m
58.8 g/t Au over 4 metres @ 235m
64.6 g/t Au over 4 metres @ 278m

SOUTH

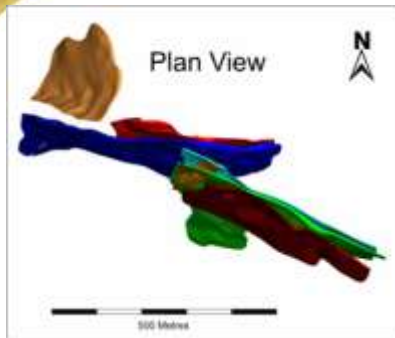
Recent Deep Results

81.8 g/t Au over 6 metres @ 569m
5.3 g/t Au over 10 metres @ 423m
7.1 g/t Au over 6 metres @ 352m

2 km

GOLOUMA DEPOSIT – WEST (ADDITIONAL MINERAL POTENTIAL)

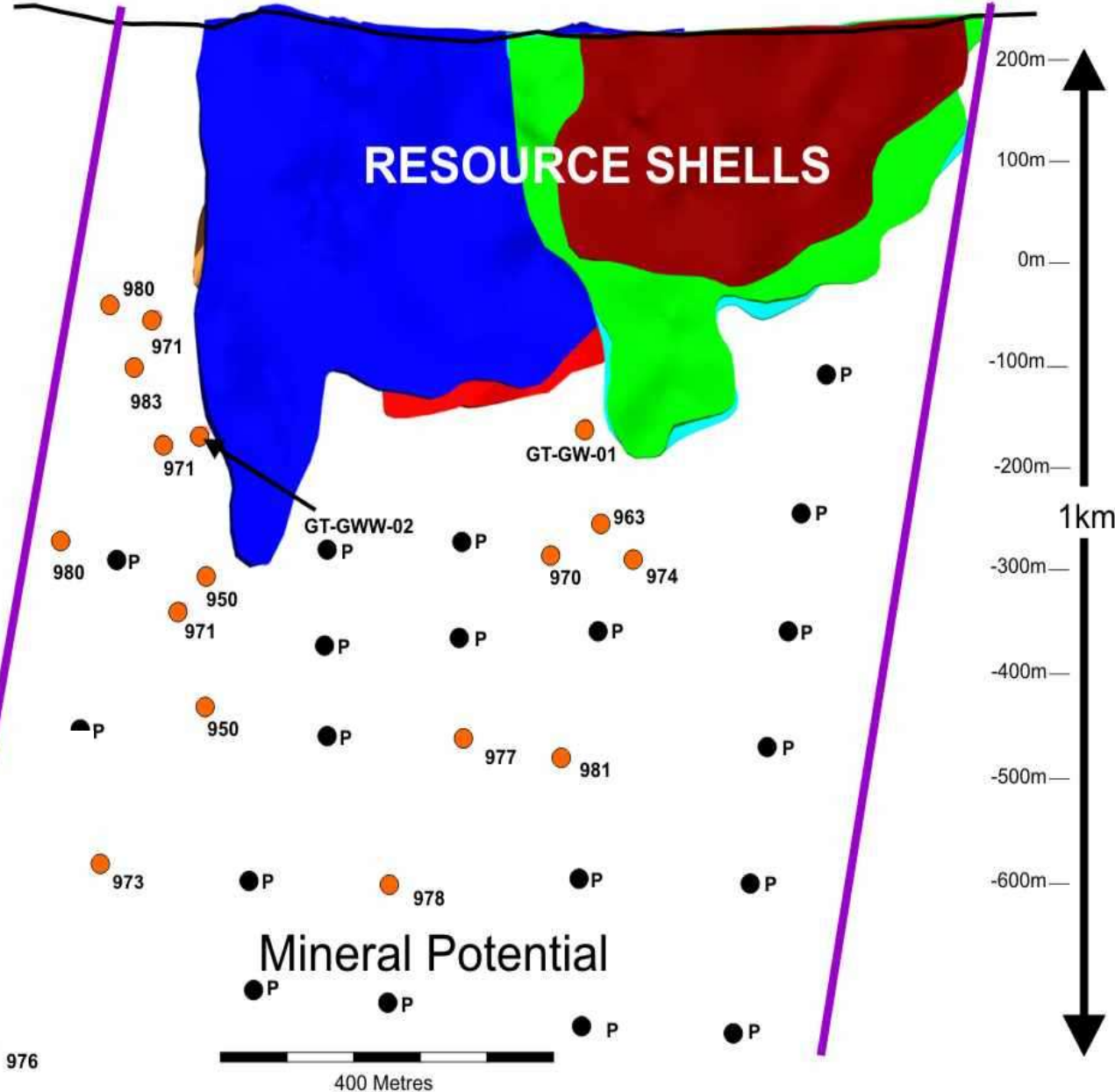
LONGITUDINAL REPRESENTATION FACING NORTH, DIPPING – 75 SOUTH



Legend

- 1100 Zone
- 1200 Zone
- 1300 Zone
- 1400 Zone
- 1500 Zone
- 1700 Zone
- Pierce Points
- Proposed Drill Holes

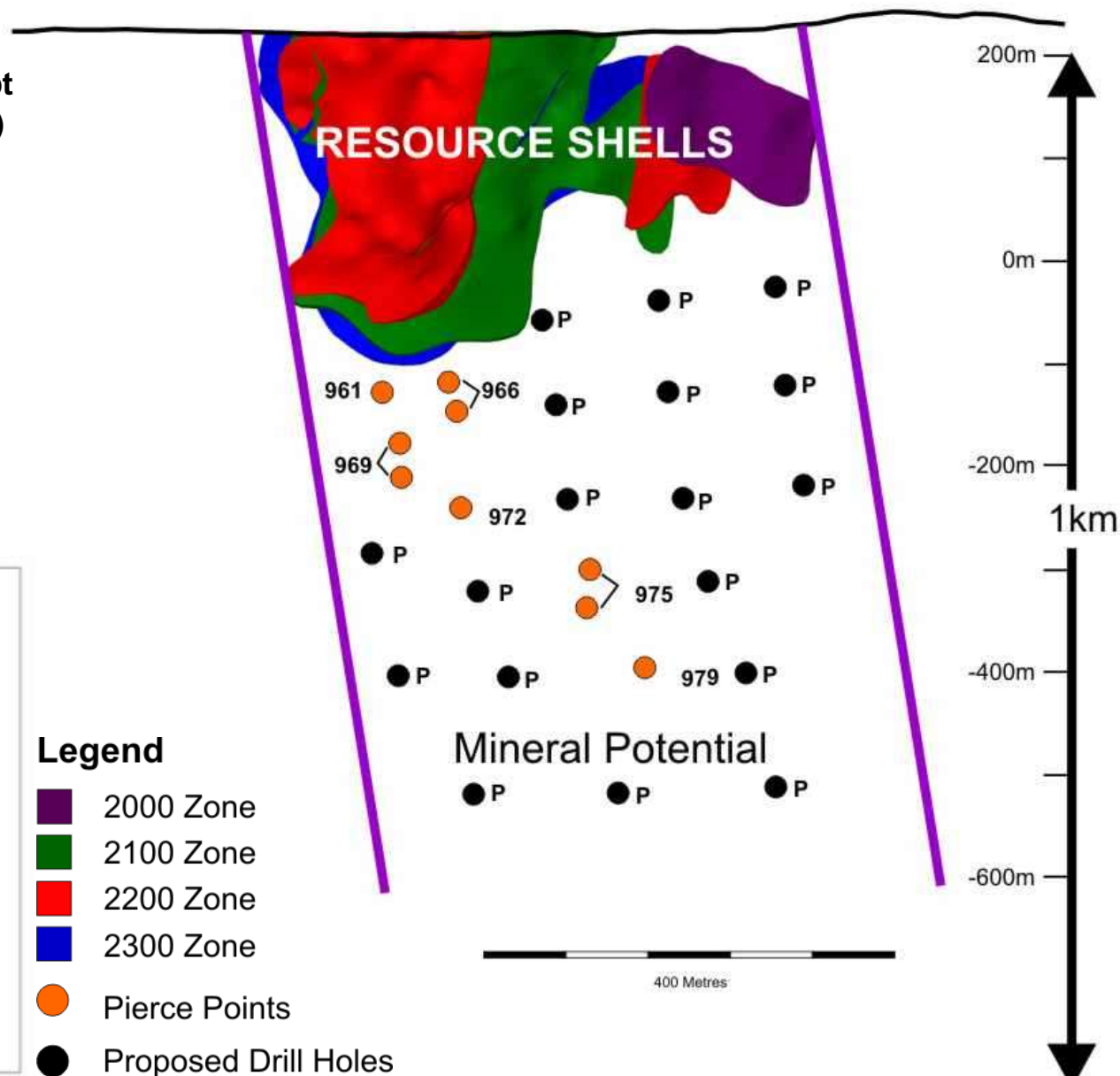
Hole#	Grade g/t Au	Intercept (metres)
950	46.75	2
and	1.51	5
970	32.05	6
971	421.40	3
and	3.42	4
and	4.81	11
973	4.49	4
974	45.49	1
976	8.63	2
977	4.61	10
980	36.43	2
and	4.56	8
GT-GW-01	6.77	7
GT-GWW-02	11.43	9



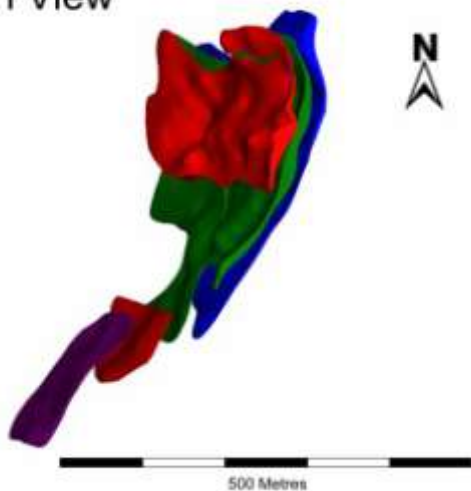
GOLOUMA DEPOSIT – SOUTH (ADDITIONAL MINERAL POTENTIAL)

LONGITUDINAL REPRESENTATION FACING EAST, DIPPING – 75 WEST

Hole#	Grade g/t Au	Intercept (metres)
961	4.20	7
966	7.18	3
and	8.30	10
969	7.37	4
and	81.83	6
972	6.64	13
975	4.32	4
and	7.82	1
979	3.06	2



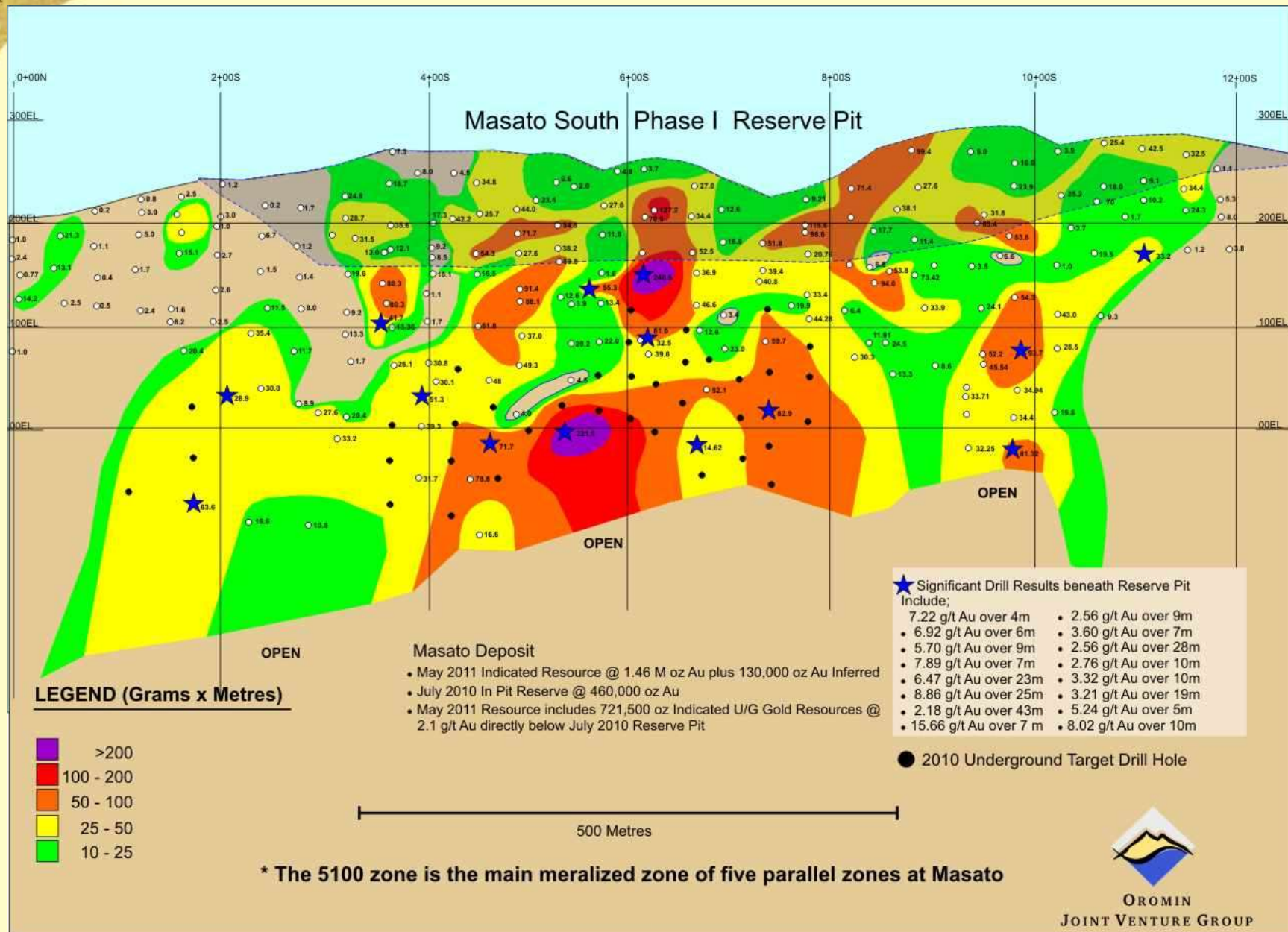
Plan View





MASATO DEPOSIT

MASATO DEPOSIT - ZONE 5100* - GRAM METRES LONG SECTION



OROMIN
JOINT VENTURE GROUP



BULK TONNAGE DEPOSITS

BULK TONNAGE DEPOSITS, DISCOVERIES AND PROSPECTS



Five bulk tonnage gold deposits, two new discoveries* and two new prospects** within 15 kilometre extent of Structural Corridor

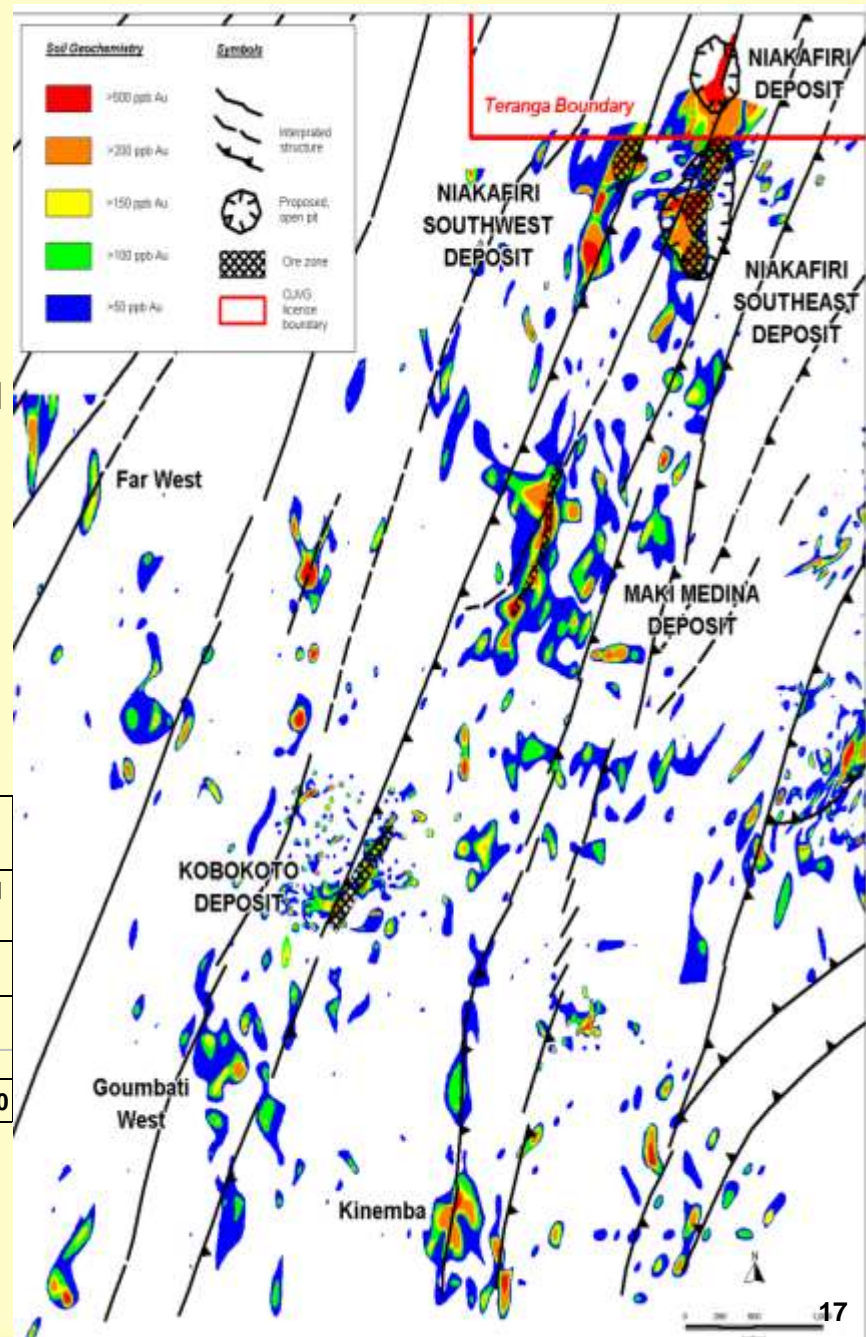
Bulk Tonnage Deposits

- 1 **Masato** * Kinemba
- 2 **Niakafiri SE** * Sekoto
- 3 **Niakafiri SW**
- 4 **Maki Medina** **Goumbati West
- 5 **Kobokoto** **Far West

DEPOSIT	INDICATED RESOURCES			INFERRED RESOURCES		
	Tonnage	Grade g/t Au	Contained Oz	Tonnage	Grade g/t Au	Contained Oz
MASATO ¹	35,531,000	1.28	1,457,300	3,233,000	1.25	129,700
HEAP LEACH ²	20,606,000	0.71	475,500	7,046,000	0.53	120,450
TOTAL			1,932,800			250,150

¹ Masato Resource includes 721,460 oz Indicated Au Resources for Potential U/G Mining @ 2.1 g/t Au

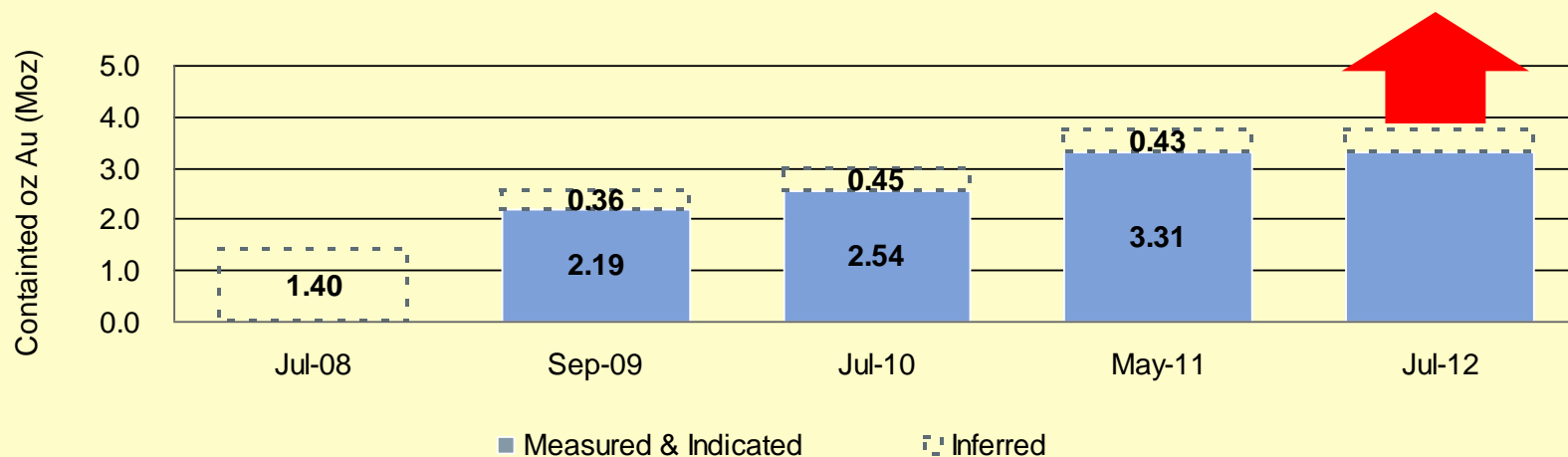
² Includes the Niakafiri SE, Niakafiri SW, Maki Medina and Kobokoto Deposits;






Deposits

Golouma Style	Golouma (South & West)	Golouma (South & West) Kerekounda	Golouma (South & West) Kerekounda Kourouloulou	Golouma (South & West) Kerekounda Kourouloulou
Masato Style	Masato	Masato Niakafiri Maki Medina	Masato Niakafiri Maki Medina	Masato Niakafiri SE Niakafiri SW Maki Medina Kobokoto
Total	2	5	6	8



Source: Oromin Exploration Ltd.

- 
- A man wearing a white cap, sunglasses, a red safety vest over a blue shirt, and light blue jeans is working on a steep, rocky hillside. He is using a tool to dig into the soil. The hillside is covered with green vegetation and large rocks. In the background, there are more trees and a forest.
1. MAMASATO
 2. SABORAYA
 3. GOLOUMA WEST EXTENSION
 4. KOUROULOULOU SOUTH
 5. KOTOUNIOKOLLA
 6. SEKOTO
 7. KINEMBA



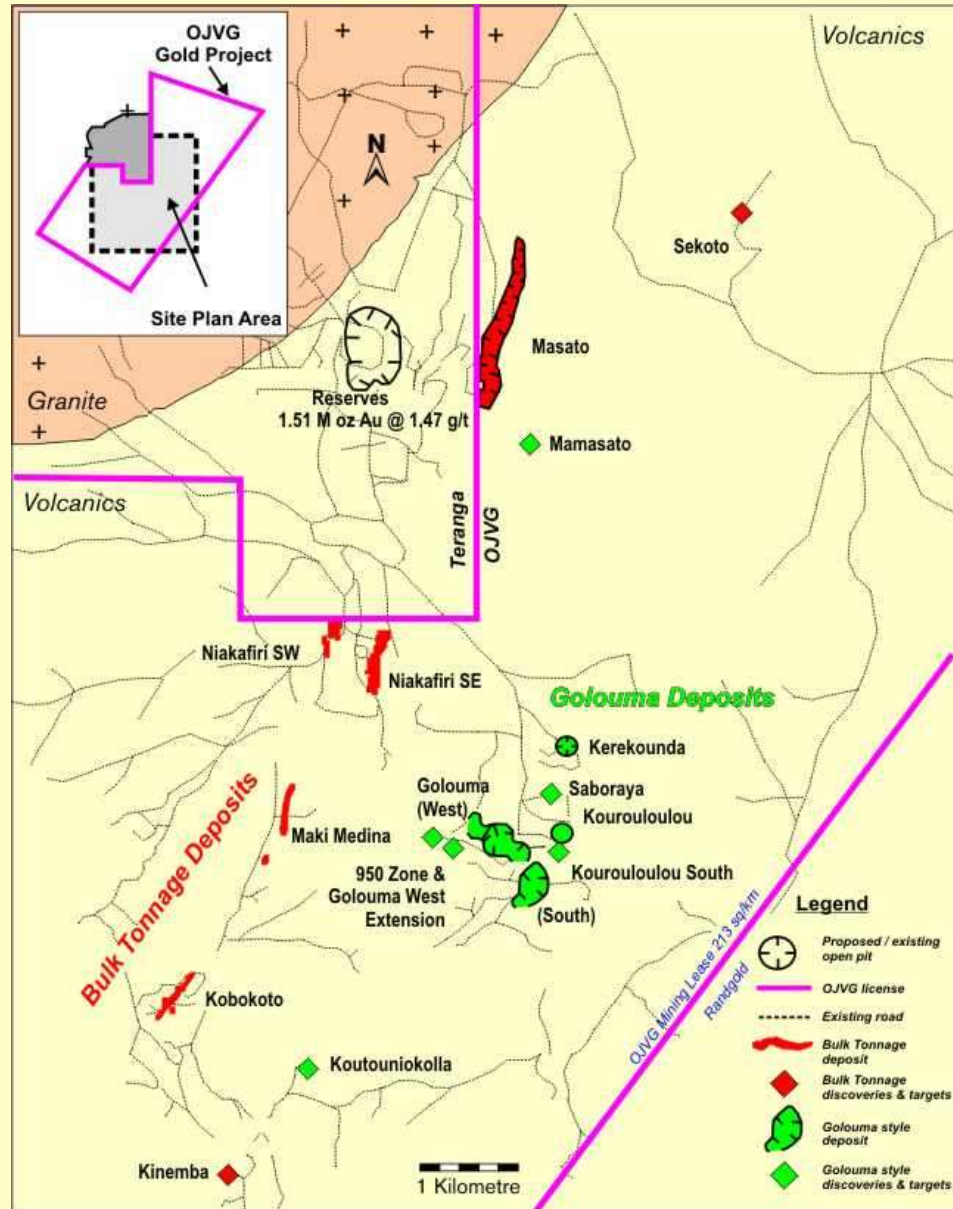
NEW DISCOVERIES



1. MAMASATO

- Located 4.5 Kms north of Golouma deposit and 2 Kms southeast of central Masato deposit
- Coincident 800 to 1,000 metre long, E-W oriented gold-in-soil geochem anomaly
- Series of dilational NNE and E-W oriented shear-hosted quartz vein systems
- Deeper than normal depths of oxide preserved beneath extensive laterite cover
- Initial prospecting results include:

36.9 g/t Au	5.14 g/t Au	3.29 g/t Au
12.71 g/t Au	4.13 g/t Au	3.17 g/t Au
10.63 g/t Au	3.57 g/t Au	
- Trenching and initial drilling has visually confirmed third-dimensional continuity to both veining and altered shear zones
- Initial drilling results include:
 - 2.64 g/t Au / 5m
 - 2.86 g/t Au / 6m
 - 3.58 g/t Au / 8m
 - 10.11 g/t Au / 4m



NEW DISCOVERIES – GOLOUMA STYLE



2. SABORAYA

- Located between Kerekounda and Kourouloulou deposits
- Dilational shear hosted quartz veins
- Artisanal mining location
- Drilling to-date: 150m strike and 100m depth
- Significant Results:
8.91 g/t Au / 5m 6.94 g/t Au / 4m 3.44 g/t Au / 23m
3.92 g/t Au / 3m

3. GOLOUMA WEST EXTENSION

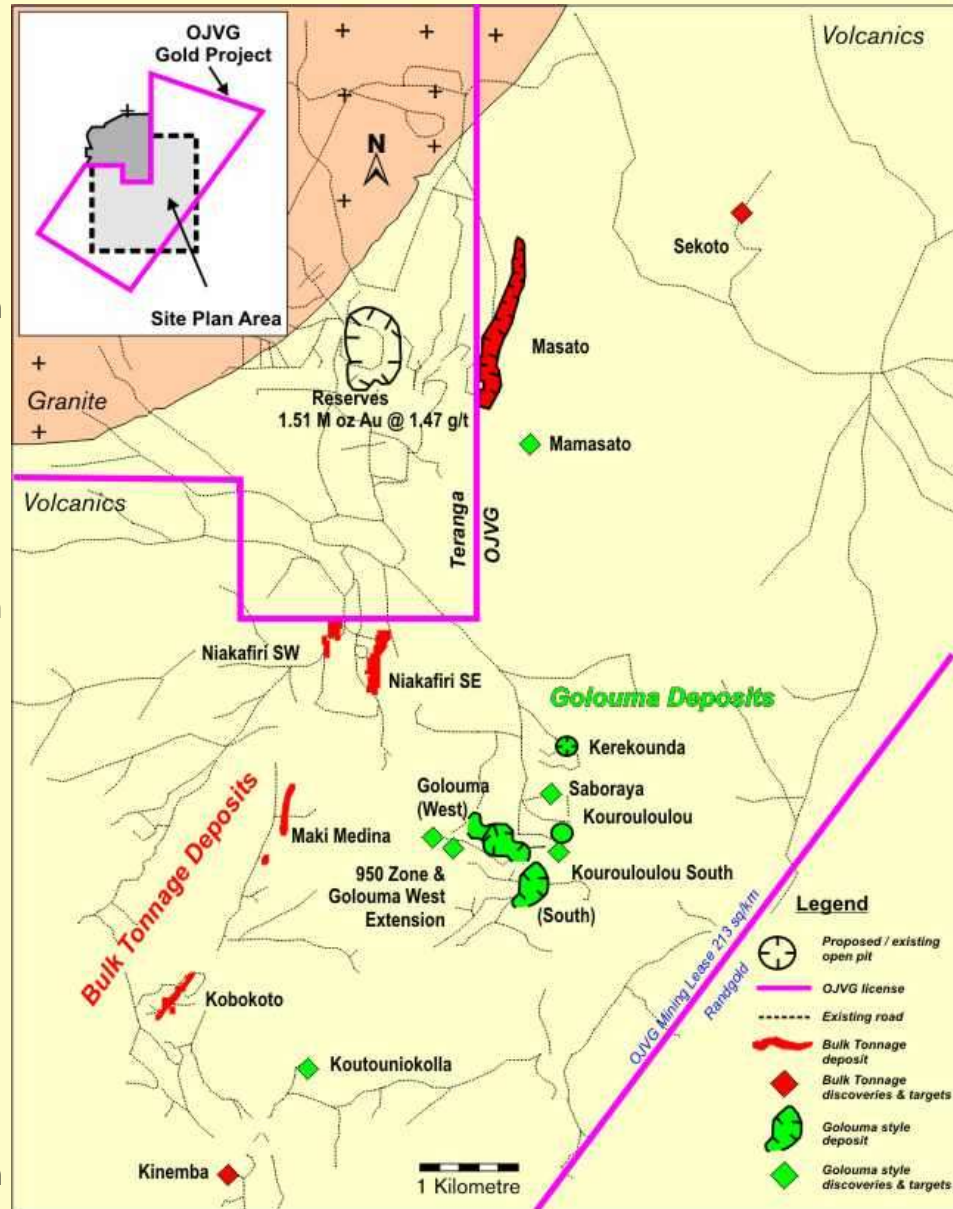
- Western extent of the Golouma deposit
- Sub-parallel zones to Main Golouma deposit that were intersected during deep-drilling program
- Significant Results:
421.4 g/t Au / 3m 36.43 g/t Au / 2m 46.75 g/t Au / 2m

4. KOUROULOULOU SOUTH

- Located immediately south of Kourouloulou deposit
- Former artisanal mining location
- Limited drilling to-date: 80m strike and 80m depth
- Significant Results:
1.37 g/t Au / 8m 2.43 g/t Au / 7m

5. KOUTOUNIOKOLLA

- Located 3.5 Kms southwest of Golouma deposit
- Coincident soil geochem anomaly
- Topographic high within broad laterite cover
- Drilling to-date: 150m strike and 125m depth
- Significant Results:
4.30 g/t Au / 16m 3.29 g/t Au / 14m 3.62 g/t Au / 13m
3.86 g/t Au / 5m 1.44 g/t Au / 34m





6. SEKOTO

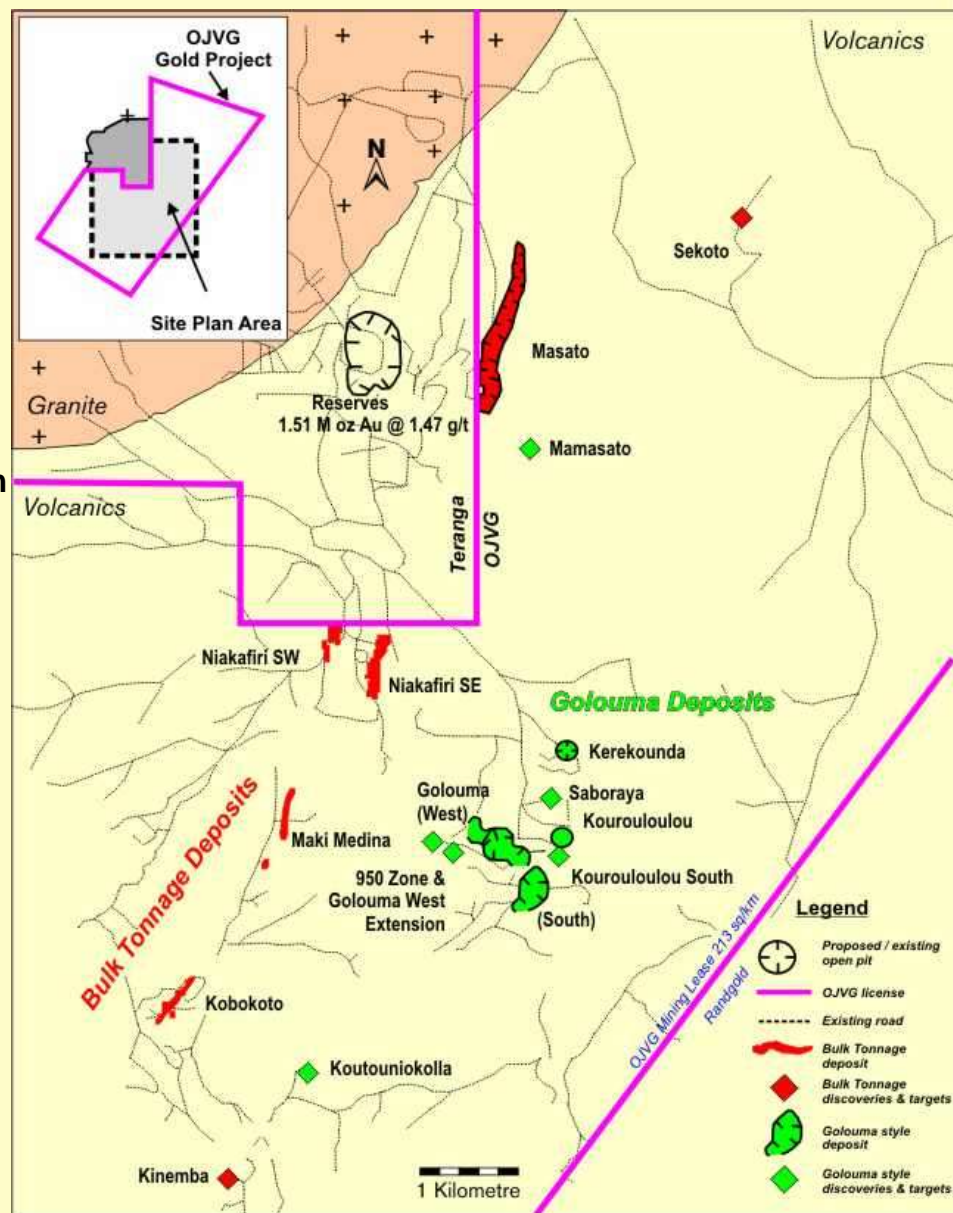
- Located 9 Kms northeast of Golouma deposit
- Broad circular geochem anomaly associated with granitic intrusive
- Drilling to-date: 350m strike and 100m depth
- Significant Results:

1.15 g/t Au / 17m	0.65 g/t Au / 23m	0.81 g/t Au / 6m
1.67 g/t Au / 18m	1.67 g/t Au / 5m	1.29 g/t Au / 4m
0.84 g/t Au / 12m	0.75 g/t Au / 11m	1.50 g/t Au / 36m

7. KINEMBA

- Located 5 Kms southwest of Golouma deposit
- Series of sub-parallel zones coincident with soil geochem anomaly
- Drilling to date 550m strike and 150m depth
- Significant Results:

2.40 g/t Au / 10m	1.32 g/t Au / 13m	1.07 g/t Au / 8m
1.64 g/t Au / 7m	2.16 g/t Au / 14m	1.66 g/t Au / 7m
1.32 g/t Au / 8m	1.49 g/t Au / 5m	2.09 g/t Au / 5m



OJVG GOLD PROJECT – UPSIDE OPPORTUNITIES

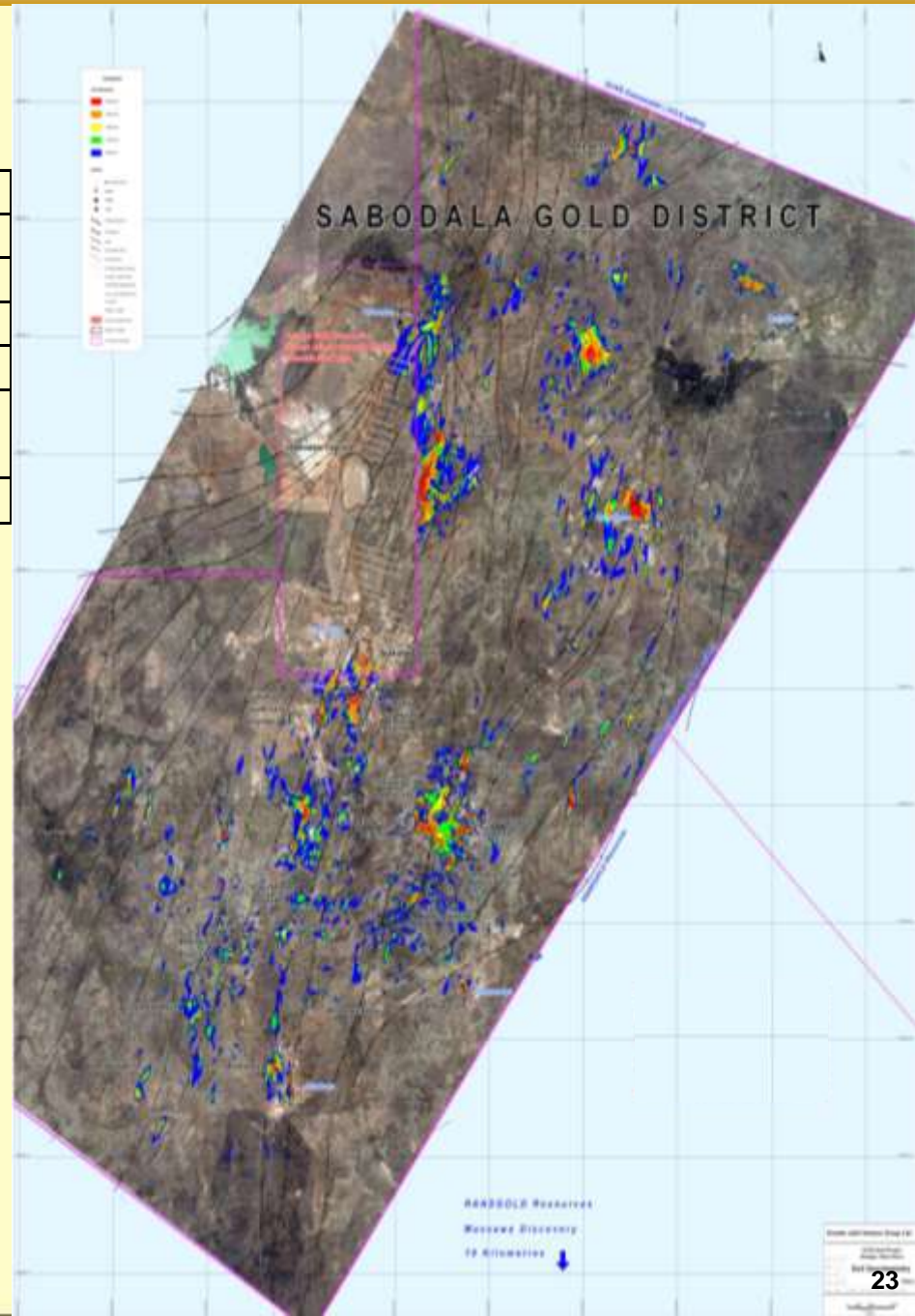
PROJECT MINERAL RESOURCES (May 2011)

Deposit	Indicated		Inferred Resources	
	(M oz Au)	(g/t Au)	(M oz Au)	(g/t Au)
Golouma's (3)	1.38	3.36	0.18	4.04
Masato (1)	1.46	1.28	0.13	1.25
Bulk Heap Leach (4)	0.48	0.71	0.12	0.048
Total	3.32		0.43	

OJVG's updated resources at its 8 gold deposits, 7 new discoveries and targets along with the large additional mineral potential identified will allow for a significant expansion of the mine plan as outlined in the 2010 Feasibility Study

ADDITIONAL MINERAL POTENTIAL: Based on the interpretation of known zones of mineralization, an additional 24 to 47.5 tonnes of mineral potential grading from 2 to 4 g/t Au is targeted beneath 4 of our existing deposits.

We believe that the total mineral potential at the OJVG Gold Project will ultimately exceed 9 million ounces gold – an excellent base for one of West Africa's next large gold mines



OJVG GOLD PROJECT – NEXT DISCOVERIES



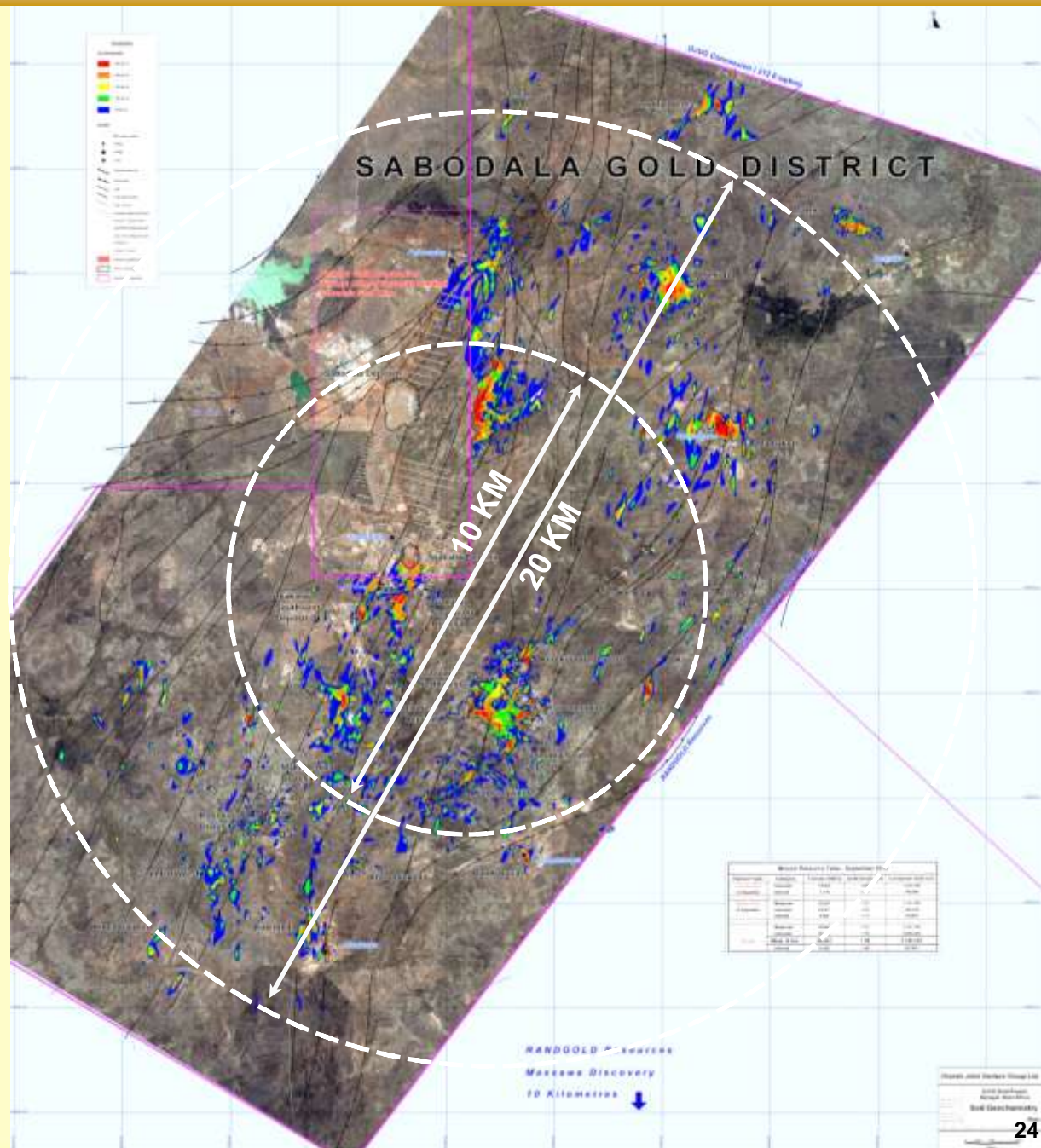
**The OJVG GOLD PROJECT
Covers an 8 to 10 km Wide and
22 km Long Structural Corridor
of Favorable Geology**



**Approximately 90% of the OJVG
Expenditures and Resources
Identified to-date Are Within the
Central 10 km Search Area of the
Project's Prospective Ground**



**Current Exploration Activities Are
Now Expanding With Earnest
Outwards Into and Beyond the
Central 20 km Search Area Where
New Discovery Opportunities
Abound**





OJVG GOLD PROJECT – SOCIAL PROGRAMS



Water



Education



Health



Sustainable Development



Occupational Training



Community Relations



Building and Re-Positioning Livestock Water Sources Distant from Domestic Wells



New Water Wells Drilled For Domestic Use

SOCIAL PROGRAMS - EDUCATION



Building Schools at Numerous Local Villages







Supplying Schools with Education Materials and Necessary Supplies







SOCIAL PROGRAMS - HEALTH




-  Building Hospitals, General Clinics and Maternity Clinics At Various Local Villages
-  Supplying Ambulance Services
-  Hiring Full-Time Regional Medical Staff
-  Training Hospital Nurses and Technicians




-  HIV / AIDS Awareness Programs
-  Inoculation Programs
-  Health Education Seminars
-  Malaria Prevention – Regional Spraying and Mosquito Netting

SOCIAL PRRAMS - SUSTAINABLE DEVELOPMENT




 Regional Agricultural Coaching Programs




 Food Mills For Villages



 Agricultural Supplies



- 
- Established Chicken Farming Opportunities
 - Established Bee Farming Opportunities
 - Community Garden Farming Opportunities
 - Regional Tree Nursery



SOCIAL PROGRAMS - OCCUPATIONAL TRAINING



Medical Personnel



Diamond Drillers



Geotechnicians



Exploration Geologists
Scholarship Program



Camp and Logistical Management



Catering and Domestic Management





SOCIAL PROGRAMS - COMMUNITY RELATIONS



Active and Directly Involved in All Aspects of Local Communities

