

Opportunity • Progression • Delivery



Notices & Disclaimer

IMPORTANT NOTICE

The information in this document is subject to updating, revision and amendment. This document neither constitutes nor forms nor should be constructed as constituting or forming part of any offer or invitation to sell or any solicitation of any offer to purchase or to subscribe for any securities in European Goldfields Limited (the "Company") or any other body corporate or an invitation or inducement to engage in investment activity under section 21 of the UK Financial Services and Markets Act 2000 nor shall it or any part of it form the basis of or be relied on in connection with any contract therefore. This document does not constitute an invitation to effect any transaction with the Company nor to make use of any services provided by the Company. No reliance may be placed for any purpose whatsoever on the information contained in this document nor on assumptions made as to its completeness. No representation or warranty, express or implied, is given by the Company, any of its subsidiaries or any of its respective advisers, directors, officers, employees or agents, as to the accuracy, fairness or completeness of the information or opinions contained or expressed in this document and no liability is accepted for any such information or opinions (which should not be relied upon) or for any loss howsoever arising, directly or indirectly, from any use of this document or its contents or information and opinions contained in this document. The information and opinions contained in this document are provided as the date of this document and are subject to change without notice. This document has been prepared in compliance with English law and English courts will have exclusive jurisdiction over any disputes arising from or connected with this document.

FORWARD-LOOKING STATEMENTS

Certain statements and information contained in this document, including any information as to the Company's future financial or operating performance and other statements that express management's expectations or estimates of future performance, constitute forward-looking information under provisions of Canadian provincial securities laws. When used in this document, the words "anticipate", "expect", "will", "intend", "estimate", "forecast", "planned" and similar expressions are intended to identify forward-looking statements or information. Forward-looking statements include, but are not limited to, the estimation of mineral reserves and resources, the timing and amount of estimated future production, costs and timing of development of new deposits, permitting time lines and expectations regarding metal recovery rates. Forward-looking statements are necessarily based upon a number of estimates and assumptions that, while considered reasonable by management, are inherently subject to significant business, economic and competitive uncertainties and contingencies. The Company cautions the reader that such forward-looking statements involve known and unknown risks, uncertainties and other factors that may cause the actual financial results, performance or achievements of the Company to be materially different from its estimated future results, performance or achievements expressed or implied by those forward-looking statements and the forward-looking statements are not guarantees of future performance. These risks, uncertainties and other factors include, but are not limited to: changes in the price of gold, base metals or certain other commodities (such as fuel and electricity) and currencies; uncertainty of mineral reserves, resources, grades and recovery estimates; uncertainty of future production, capital expenditures and other costs; currency fluctuations; financing and additional capital requirements; the successful and timely permitting of the Company's Skouries, Olympias and Certaj projects; legislative, political, social or economic developments in the jurisdictions in which the Company carries on business; operating or technical difficulties in connection with mining or development activities; the speculative nature of gold and base metals exploration and development, including the risks of diminishing quantities or grades of reserves; the risks normally involved in the exploration, development and mining business; and risks associated with internal control over financial reporting. For a more detailed discussion of such risks and material factors or assumptions underlying these forward-looking statements, see the Company's Annual Information Form for the year ended 31 December 2009, filed on SEDAR at www.sedar.com. The Company does not intend, and does not assume any obligation, to update or revise any forward-looking statements whether as a result of new information, future events or otherwise, except as required by law.

TSX/AIM: EGU – A Compelling Proposition

High impact portfolio of projects

- NI 43-101 compliant reserves of 10 Moz gold, plus substantial silver and base metal content
- All projects located within the EU
- One small producing mine, 3 significant gold development projects (Greece, Romania)
 - Projected 2013 production: 400Koz Au; 4Moz Ag; 40Kt Cu; 90Kt Pb & Zn per annum
- Opportunity to significantly increase resource ounces during 2010 on drill ready targets within current licence areas

Capitalised for growth

- Working capital: US\$145m (end 2009); No Debt ; Cash: US\$113m
- US\$47m invested in future projects during 2009

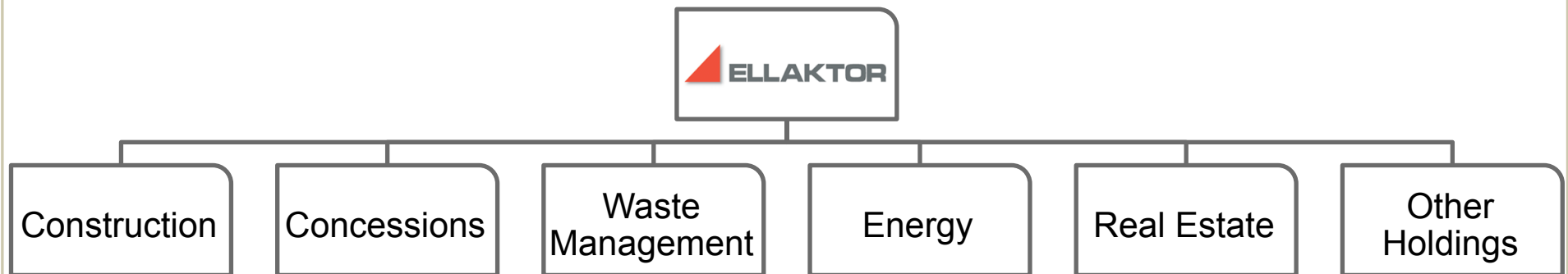
Permitting process nearing completion

- Government approval in Greece
 - PEIS awarded
- Romanian PUZ process significantly advanced with recent granting of final permit

Demonstrably undervalued in comparison to peer group

Ellaktor – Strong Partner in SE Europe

- Aktor S.A., Ellaktor's 100%-controlled subsidiary, is the leader in South Eastern Europe's construction sector
- Committed, long term shareholder of EGU (19.5%)
- Ellaktor: approx €750m market cap, quoted on the Athens Stock Exchange (ASE: 'Ellaktor')
- Unmatched experience in environmental permitting for large scale projects in Greece
- Involvement in a range of diverse and large scale multinational projects; 3 year order book comprises international, domestic, public and private contracts
- Significant cash generated from concessions: Athens ring-road and Rion–Antirion toll bridge



Ellaktor – Significant Projects

TUNNELLING – Monastiraki - Egaleo metro line



INFRASTRUCTURE – Athens
ring-road



INFRASTRUCTURE – Rion-Antirion
bridge



ENVIRONMENTAL – Pireaus waste water
plant



Overview Of Assets & Reserves

Greece

Hellas Gold (95% interest)

Skouries

3.9 Moz Gold
0.8 Mt Copper
Porphyry, greenfield site
Basic engineering complete
Long lead items delivered

Olympias

3.6 Moz Gold
1.2 Mt Lead + Zinc
52.1 Moz Silver
Replacement mixed sulphide
deposit, previously mined
Existing infrastructure

Stratoni

0.4 Mt Lead + Zinc
13.9 Moz Silver
Replacement mixed
sulphide, in production



Romania

Deva Gold (80% interest)

Certej

2.4 Moz Gold
17.3 Moz Silver
Epithermal, brownfield
site
Basic engineering
complete
Final PUZ approval
received
US\$125m debt financing
mandate signed

All Proven & Probable Reserves

	Gold (Moz)	Silver (Moz)	Lead & Zinc (Kt)	Copper (Kt)
Total Reserves	10	83.2	1,600	800
Attributable Reserves	9.1	76.4	1,550	750

Stratoni – In Production

Deposit style	Replacement mixed sulphide
Mining Method	U/G Drift & Fill
Processing	Flotation (Pb-Ag and Zn conc.)
Mine Life	To 2015 – Drilling to extend LOM
Reserves	2.3Mt @ 9.8% Zn, 7.2% Pb and 188g/t Ag = 0.4Mt Pb & Zn and 13.9Moz Ag
Production	12Kt Pb, 18Kt Zn, 900Koz Ag per annum
Total Operating Cost	US\$160/t milled (YTD, weighted as per Q4)



Project Highlights

- In production
- >100 yrs of historic production
- Cash flow positive
- **Demonstrates our permitting and environmental capabilities and social responsibility**

Optimisation

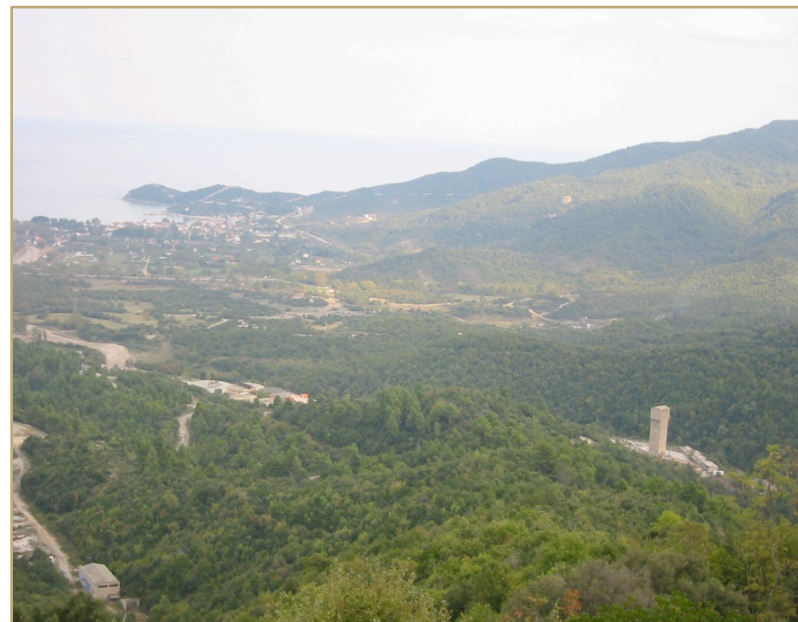
- Enhanced processing circuit will improve quality of lead concentrate
- Recently completed capital infrastructure improving mine efficiency

Upside

- Potential for an additional 2 years of mine life in short term
- Huge exploration potential within area with drilled and drill ready targets

Olympias – Brownfield Site With Existing Infrastructure

Deposit style	Replacement mixed sulphide
Initial Capex	US\$40-50m
Mining Method	U/G Drift & Fill, Bench & Fill
Processing	Flotation (Zn and Pb/Ag Conc.), Gold Plant (Doré)
Mine Life	20 years
Reserves	Total: 13.9Mt @ 8.0g/t Au, 116g/t Ag, 3.8% Pb and 5.0% Zn = 3.6Moz Au, 52.1Moz Ag and 1.2Mt Pb & Zn
Production	~100-200Koz Au pa
Total Cash Cost	~US\$300/oz (co-product)



Project Highlights

- Completed sale of gold concentrate stockpile
- PEIS approved
- Plant refurbishment commenced
- Approval of EIS for re-treatment of tailings anticipated
- Underground refurbishment study by Scott Wilson Mining

Optimisation

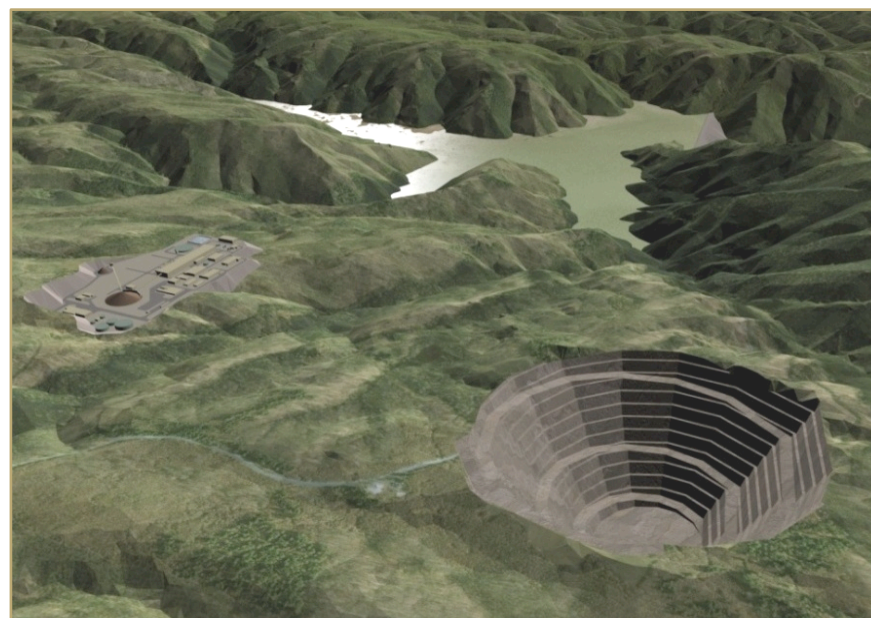
- Continue with phased development plan
- Potential acceleration of construction of onsite gold plant

Upside

- Orebody open at depth
- Highly prospective drilled & drill-ready targets
- Significant near mine assets and development potential at Piavitsa
- Potential to add significant resource ounces

Skouries – Greenfield Site with Gold Reserves Of 3.9 Million Ounces

Deposit style	Porphyry
Initial Capex	US\$300m
Mining Method	Open Pit to U/G, sub level caving (yr 6)
Processing	Flotation (Cu/Au conc.) & Gravity circuit (Au doré)
Mine Life	19 years
Strip Ratio	0.6 : 1
Reserves	146Mt @ 0.8g/t Au and 0.5% Cu = 3.9 Moz Au, 0.8Mt Cu
Production	±200Koz Au, ±40kt Cu pa
Total Cash Cost	US\$250-300/oz (co-product)



Project Highlights

- PEIS approved
- Outotec equipment contract complete
- Long lead items delivered
- Basic engineering package delivered to schedule

Optimisation

- Outotec continues to advance the detailed engineering package
- Potential to increase recovery from gravity circuit

Upside

- Exploration potential with 2 drill ready target areas, Fisoka and Tsikara within 8km of Skouries
- Additional open pittable resources could benefit Skouries by deferring underground capital

Certej – Brownfield Site with Excellent Infrastructure

Deposit style	Epithermal
Initial Capex	US\$190m
Mining Method	Open Pit
Processing	Flotation > Albion Process > CIL
Mine Life	16 years
Strip Ratio	3.1 : 1
Reserves	47Mt = 2.41Moz Au, 17.3Moz Ag
Production	Yr 1-3: 172Koz Au and 720Koz Ag pa; Yr 1-11.5 155Koz Au and 820Koz Ag pa
Total Cash Cost	US\$370/oz (by-product)



Project Highlights

- Final permit required for grant of PUZ issued
- Full PUZ to be granted at next meeting of Certej Council
- Basic engineering completed
- Mandate for Finance signed

Optimisation

- Focus on completion of Technical Report for construction permit
- Aktor have secured a major highway contract close to Certej; potential to supply aggregates from Certej project

Upside

- Licence area of 534km²
- Extensive gold mineralisation in Brad area and porphyry targets in Deva region
- Drill ready targets
- Further long term exploration potential within the Certej-Brad Belt

Financing The Project Pipeline

Olympias

- US\$40-50m initial requirement
- Local bank to provide up to €25m
- Minimise company equity
- Olympias mine plan and model under review, potential to accelerate



Capex assumes \$1.40/€

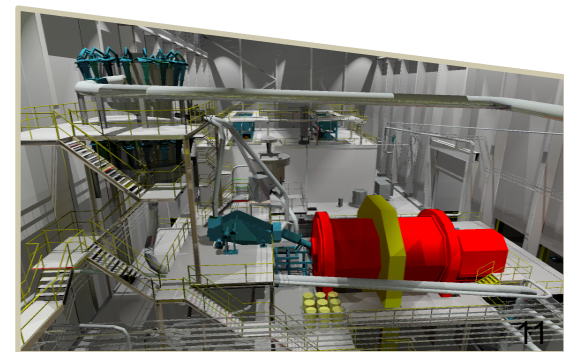
Certej

- US\$190m requirement
- Retain 100% gold upside (unhedged)
- Bank debt finance \$125m arranged
 - Bank group decided
 - Mandate letter signed
 - Term sheet finalised
 - Roles agreed
 - Independent tech review (SRK)
- Significant grant funding available
- Potential sale of waste rock – highway contract
- Minimise company equity



Skouries

- c.US\$300m requirement
- Project finance
 - Initiate bank process after Certej
- Most financeable project
 - Low cost
 - High margin
 - High debt capacity
 - Financially robust
- Retain 100% gold upside



2010 Deliverables In Greece

Permitting & Development

- ✓ PEIS already approved
- ❑ Skouries and Olympias mine and construction permits – H2
- ❑ Acceleration of Olympias gold plant – under financial and technical review
- ❑ Financing alternatives under consideration
- ❑ Key technical and operational appointments

Exploration

- ✓ Identification of 3 part-drilled or drill-ready highly prospective targets in close proximity to Olympias & Stratoni
- ✓ US\$9m results driven exploration budget approved for 2010

2010 Deliverables In Romania

Permitting & Development

- ✓ Last remaining approval required for Zonal Urbanisation Plan (“PUZ”) received 16 March 2010
- ❑ Full PUZ permit to be issued at the next meeting of Certej Council
- ✓ Mining permit already in place
- ❑ EIS application in progress
- ✓ Build out of technical team
- ❑ Final EIS and construction permits anticipated Q4 2010

Finance

- ✓ Mandate letter for US\$125m debt financing signed
- ✓ Term sheet finalised with banks and roles agreed
- ❑ Credit commitments
- ❑ Final documentation

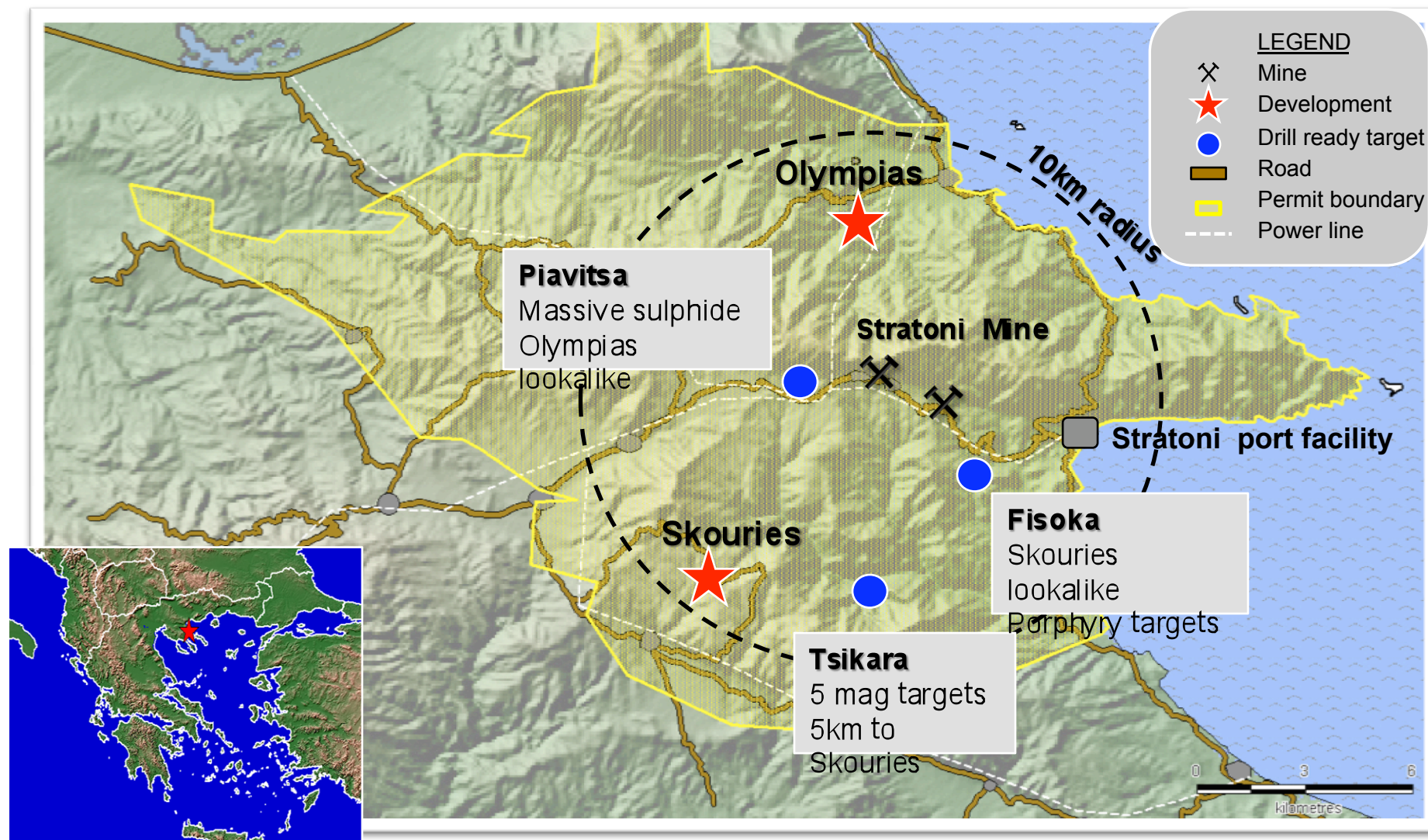
Exploration

- ✓ Identify new gold targets in Brad area and porphyry targets in Deva region
- ✓ US\$4m results driven exploration budget approved for 2010

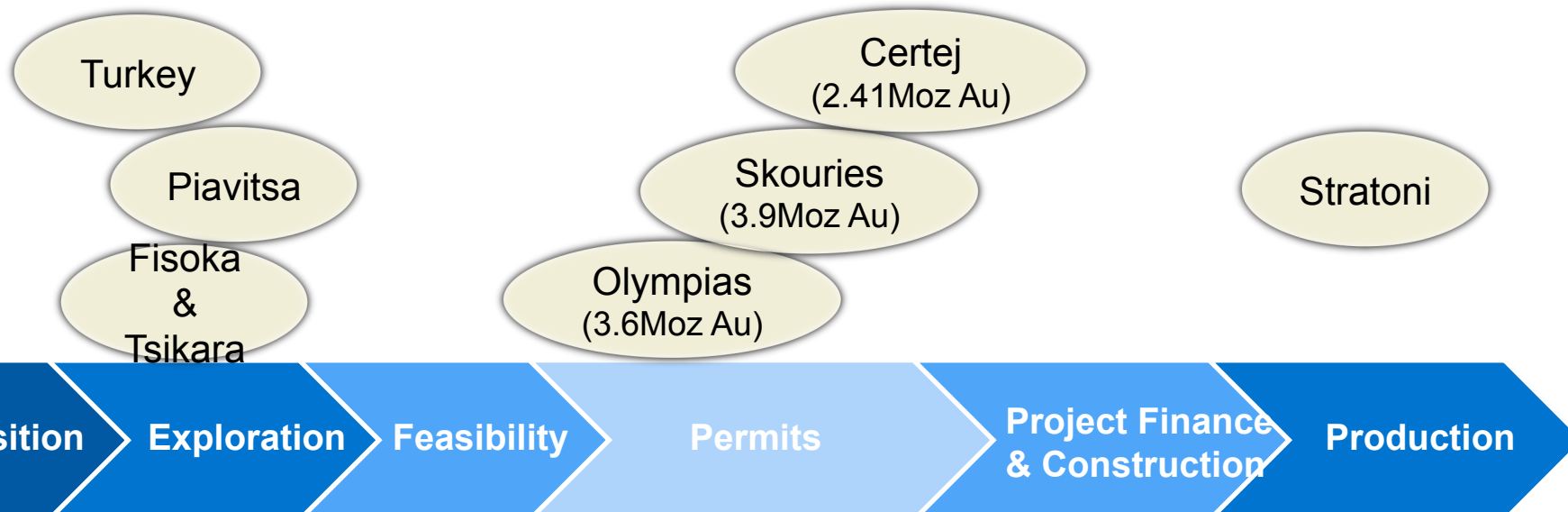
Company Exploration

- Group wide, results driven US\$15 million exploration budget
 - Split Greece (US\$9m); Romania (US\$4m); Turkey (US\$2m)
- Potential to add significant resource ounces to Company's asset base during 2010
- Objectives
 - **Greece:** Aggressive drilling and exploration program to define new massive sulphide and porphyry style resources in the inferred & indicated categories
 - **Romania:** Exploration program designed with the aim of testing current targets and delineating early project stage resources
 - **Turkey:** A programme of drilling, trenching and continued surface exploration and licence acquisition

Greece – Targets & Infrastructure

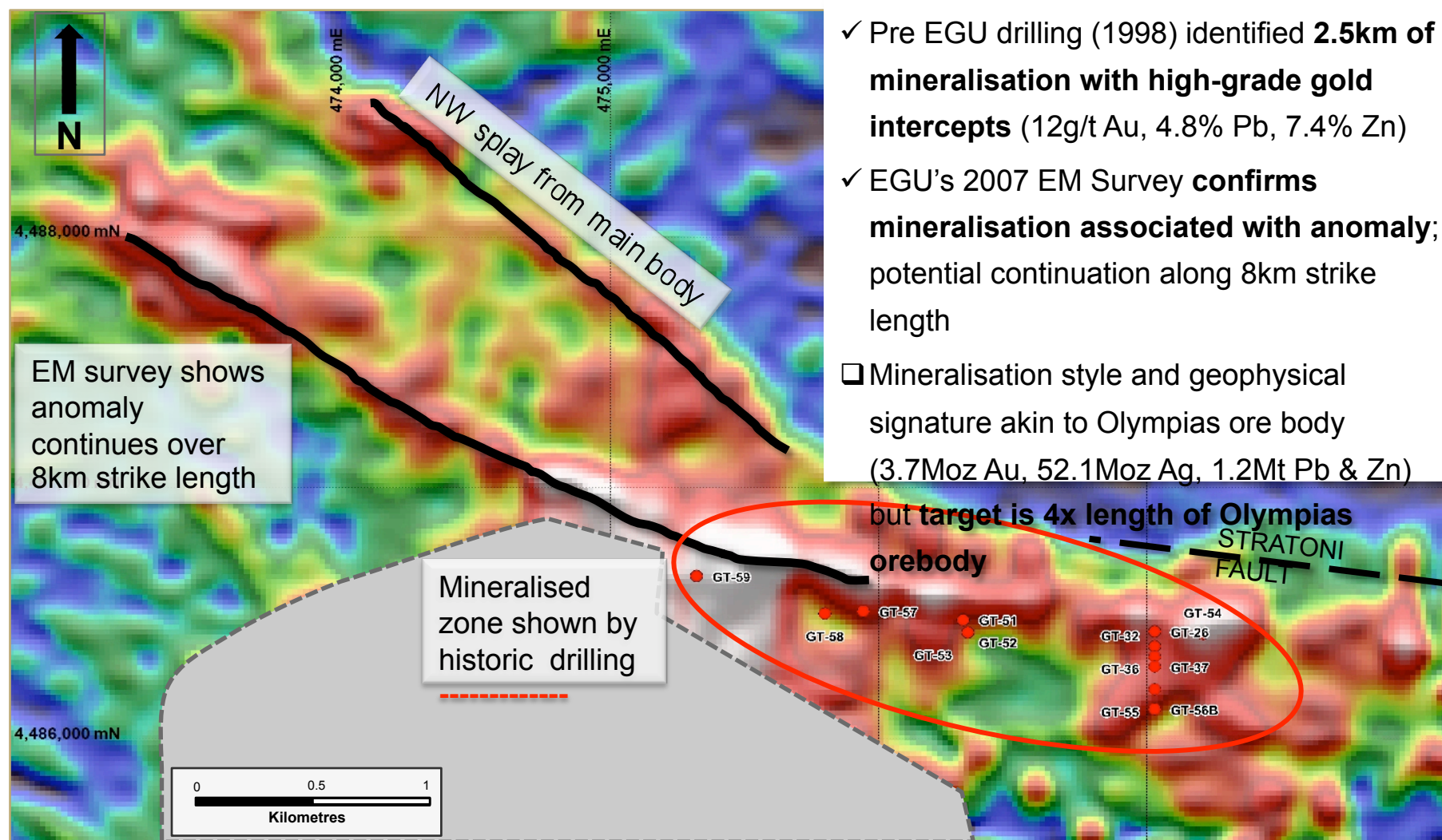


Project Status Overview



Appendices

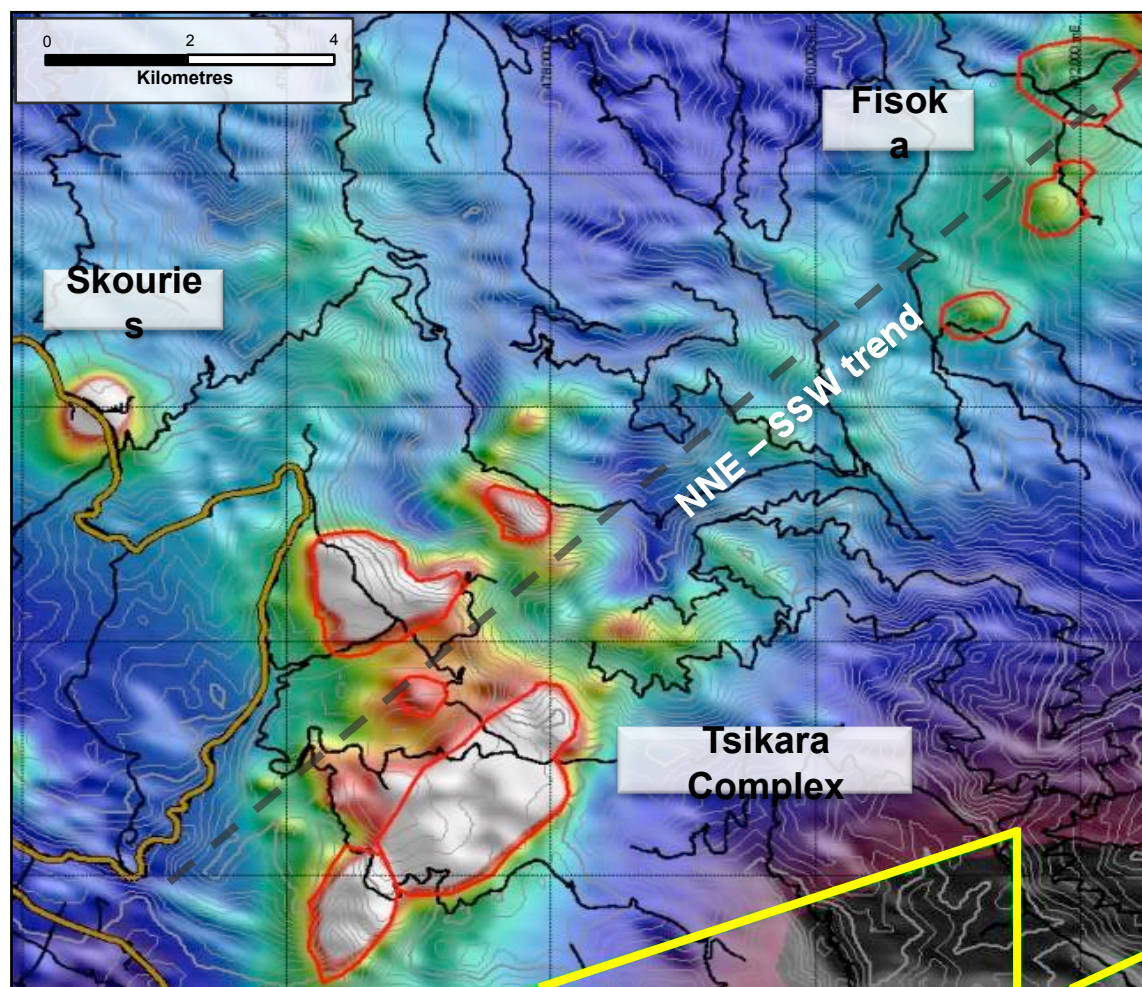
Piavitsa - EM survey extends drill target threefold



- ✓ Pre EGU drilling (1998) identified **2.5km of mineralisation with high-grade gold intercepts** (12g/t Au, 4.8% Pb, 7.4% Zn)
- ✓ EGU's 2007 EM Survey **confirms mineralisation associated with anomaly**; potential continuation along 8km strike length
- Mineralisation style and geophysical signature akin to Olympias ore body (3.7Moz Au, 52.1Moz Ag, 1.2Mt Pb & Zn)

but **target is 4x length of Olympias orebody**

Porphyry Copper-Gold Targets – Fisoka & Tsikara



Fisoka

- ✓ 3 porphyry targets with strong magnetic signatures
- ✓ Same structural trend, geophysical signature, host rock and porphyry type as Skouries (3.9Moz Au, 800Kt Cu)
- ✓ Anomalous gold and copper in soils
- ❑ Drilling to commence in 2010

Tsikara Complex

- ✓ 5 magnetic targets located approx 5km from Skouries
- ✓ Mineralisation, alteration and intense veining seen at surface
- ❑ Drilling due to commence in 2010

Global Resource & Reserve

	Gold (Moz)	Silver (Moz)	Lead & Zinc (Kt)	Copper (Kt)
Total Reserves	10	83.2	1,624	789
Attributable Reserves	9	76.4	1,543	750
Total Resources	12	91.8	1,851	1,043
Attributable Resources	11	84.8	1,759	991

Metal Prices used for R&R and Cash Cost Calculations

Reserve Cut-Off	Olympias (Oct 08)	Skouries (May 07)	Certej (July 08)
Au Price (\$/oz)	650*	425	650
Ag Price (\$/oz)	12.0	-	7.50
Cu Price (\$/lb)	-	1.10	-
Zn Price (\$/lb)	1.36	-	-
Pb Price (\$/lb)	0.68	-	-

*Price is not a limiting factor as all potential reserves are above cut-off, sharp contact between ore & waste

Cash Costs \$/oz	~300*	250-300** (Co)	370*** (By)
Au Price (\$/oz)	650	444 (LOM Avg)	650
Ag Price (\$/oz)	7.5	-	7.50
Cu Price (\$/lb)	-	1.18 (LOM Avg)	-
Zn Price (\$/lb)	0.45	-	-
Pb Price (\$/lb)	0.45	-	-

*Price rounded up

**Includes TC/RC

***Model is robust; at \$15/oz Ag, resultant CC is US\$350

Project Summaries

STRATONI MINE		Pb-Zn-Ag
Deposit type	Replacement mixed sulphide	
Mine life	To 2015 – Drilling to extend LOM	
Reserves	2.3Mt @ 9.8% Zn, 7.2% Pb and 188g/t Ag = 0.4Mt Pb & Zn and 13.9Moz Ag	
Resources	2.3Mt @ 10.8% Zn, 8.0% Pb and 207 g/t Ag = 0.4Mt Pb & Zn and 15.4Moz Ag	
Production	±230Kt ROM (2010 forecast); 12Kt Pb, 18Kt Zn, 900Koz Ag (per annum)	
Processing	Flotation (Pb-Ag conc, Zn conc)	
Recoveries	92% Pb and Zn; 90% Ag	
Mining method	Underground Drift & Fill	
OLYMPIAS PROJECT		Au-Pb-Zn-Ag
Deposit type	Replacement mixed sulphide	
Mine life	20 yrs	
Reserves	Underground: 11.5Mt @ 9.0g/t Au, 137g/t Ag, 4.6% Pb, 6.1% Zn = 3.3Moz Au; 50.9Moz Ag; 530Kt Pb; 701Kt Zn Tailings: 2.4Mt @ 3.4g/t Au, 14g/t Ag = 0.27Moz Au; 1.1Moz Ag Total: 13.9Mt @ 8.0g/t Au, 116g/t Ag, 3.8% Pb and 5.0% Zn = 3.6Moz Au, 52.1Moz Ag and 1.2Mt Pb & Zn	
Resources	4.1Moz Au; 60Moz Ag; 1.4Mt Pb & Zn	
Production	Base case: - Phase 1 = Sale of stockpile cons. - Phase 2 = Process tailings - Phase 3 = Ramp up to 900Ktpa+gold plant (Opportunity to accelerate)	
Processing	Flotation; Pyrite cons treated further (Phase 3)	
Recoveries	Pb/Zn/Ag/Au in conc.: ±90%; Met plant: 92%	
Mining method	Underground Drift & Fill; Bench & Fill	

SKOURIES PROJECT		Au-Cu
Deposit type	Porphyry	
Mine life	19 yrs	
Reserves	146Mt @ 0.8g/t Au and 0.5% Cu = 3.9Moz Au and 0.8Mt Cu	
Resources	191Mt @ 0.82g/t Au and 0.55% Cu = 5.0Moz Au and 1.0Mt Cu	
Production	±40Kt Cu and ±200Koz Au (per annum)	
Processing	Flotation (Cu/Au con) & gravity circuit (Au doré)	
Recoveries	LOM average 84% Au and 91% Cu	
Mining method	8Mtpa from 6 yr open pit followed by 7Mtpa U/G Sub level caving	
CERTEJ PROJECT		Au-Ag
Deposit type	Epithermal	
Mine life	16 yrs	
Reserves	Yr 1-11.5: 32.8Mt @ 2.0g/t Au and 11.4g/t Ag = 2.12Moz Au and 12Moz Ag	
	Yr 11.5-16 :14.1Mt @ 0.64 g/t Au and 11.7 g/t Ag = 0.29Moz Au and 5.3 Moz Ag	
Resources	2.7Moz Au and 16.3Moz Ag	
Production	Yr 1-3 172Koz Au and 720Koz Ag; Yr 1-11.5 155Koz Au and 820 Koz Ag	
Processing	Grinding > Flotation > IsaMill > Albion > CIL	
Recoveries	LOM average 81% Au and 74% Ag	
Mining method	Open pit (1.5km x 0.5km)	



www.egoldfields.com